

ADI
PRO

AVARRO™

Capture
by **ADI**

Capture
by **ADI**

UltraTech®
POWER PRODUCTS
by **ADI**

W BOX
TECHNOLOGIES

EKSKLUSIVE BRANDS



ADI's eksklusive brands

Vores eksklusive brands tilbyder den nyeste teknologi til bolig- og erhvervsinstallationer i henhold til de højeste industristandarder.

www.adiglobal.dk • 43 24 56 00 • salg.dk@adiglobal.com

ADI

ADI ADI's eksklusive brands

ADI's eksklusive mærker er altid tilgængelige på lager og tilbyder en bred vifte af brancheførende produkter, der understøtter enhver installation. Vores produkter giver exceptionel værdi og produktsupport, opfylder de højeste industristandarder og bakkes op af konkurrencedygtige garantier.

Bestil når som helst på døgnet, udforsk produkter og få oplysninger om lagerbeholdning - information lige ved hånden på:

www.adiglobal.dk





Indhold

1 Capture by ADI Cloud Solutions VSaaS	4 - 9
2 Kameraer og NVR'er	10 - 13
3 Monitorer og skærme	14 - 17
4 Monitorbeslag & Skærme og displays	18 - 19
5 Audio/video til hjemmet	20
6 Kabler	21 - 27
7 Kabler - tilbehør og værktøj	28 - 29
8 Batterier	30 - 31
9 Netværksswitche	32
10 Strømforsyninger/PSU	33 - 35
11 Adgangskontrol	36 - 38
12 Brand- og nødbelysning	40 - 41
13 ABDL-paneler	42 - 43
14 Kontakter til indbrud	44 - 45
15 Kabinetter, værktøj og hardware	46 - 49
16 Videotilbehør	50



Ring

43 24 56 00



Klik

www.adiglobal.dk
salg.dk@adiglobal.com



Afhentning

Baldershøj 13-15, Ishøj

KOMMER
SNART

Hvad er Capture by ADI Cloud Solutions VSaaS?

Capture
by ADI
Cloud Solutions
Powered by **Eagle Eye Networks**

Capture by ADI Cloud VSaaS er en fuldt administreret cloud-baseret videoovervågningsløsning, der giver et end-to-end videosystem, som er nemt at implementere og nemt at bruge. Det understøtter alle moderne browsere og fungerer på Windows, Mac og endda Linux - uden plug-ins, der skal installeres.

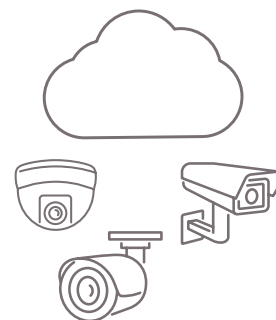
Kender du til Cloud?



Capture by ADI Cloud Solutions VSaaS er et cloud-baseret, videostyringsystem. Eagle Eye Bridge installeres på stedet, forbindes til dine kameraer, optager video lokalt og synkroniserer derefter sikkert både video og metadata til Capture by ADI Cloud Solutions-datacentret. Det er et robust sikkert apparat, der er specielt designet til at opfylde kravene til transmission af high definition-video over internettet.

Omfattende understøttelse af kameraer

Vi mener, at kamerakompatibilitet er vigtigt. Der er ingen grund til at være låst til en enkelt kameraleverandør. Virksomheder har brug for fleksibilitet til at arbejde med de kameraer, de vælger. Eagle Eye Bridges understøtter ONVIF Profile S IP-kameraer. For en opdateret liste over alle kompatible kameraer gå til www.een.com/cameras.



Fuldstændig mobil

Se video når som helst og hvor som helst. iOS- og Android-applikationerne giver fuld adgang til live og optaget video og kan også bruges til at installere, konfigurere og administrere systemet.



Bekymringsfri administration

AI software i Capture Cloud by ADI og firmwaren på Eagle Eye Bridge, administreres og opdateres af Eagle Eye Networks. Hardwaren er dækket af en 2-års garanti.

Placering af datalagring

Capture by ADI Cloud Solutions VSaaS overholder GDPR-reglerne ved at bruge virksomhedsejede og administrerede datacentre til at opbevare video i den region, hvor den blev optaget. Dette sikrer, at videodata behandles og opbevares på en måde, der er i overensstemmelse med GDPR, selv når der arbejdes i flere lande.



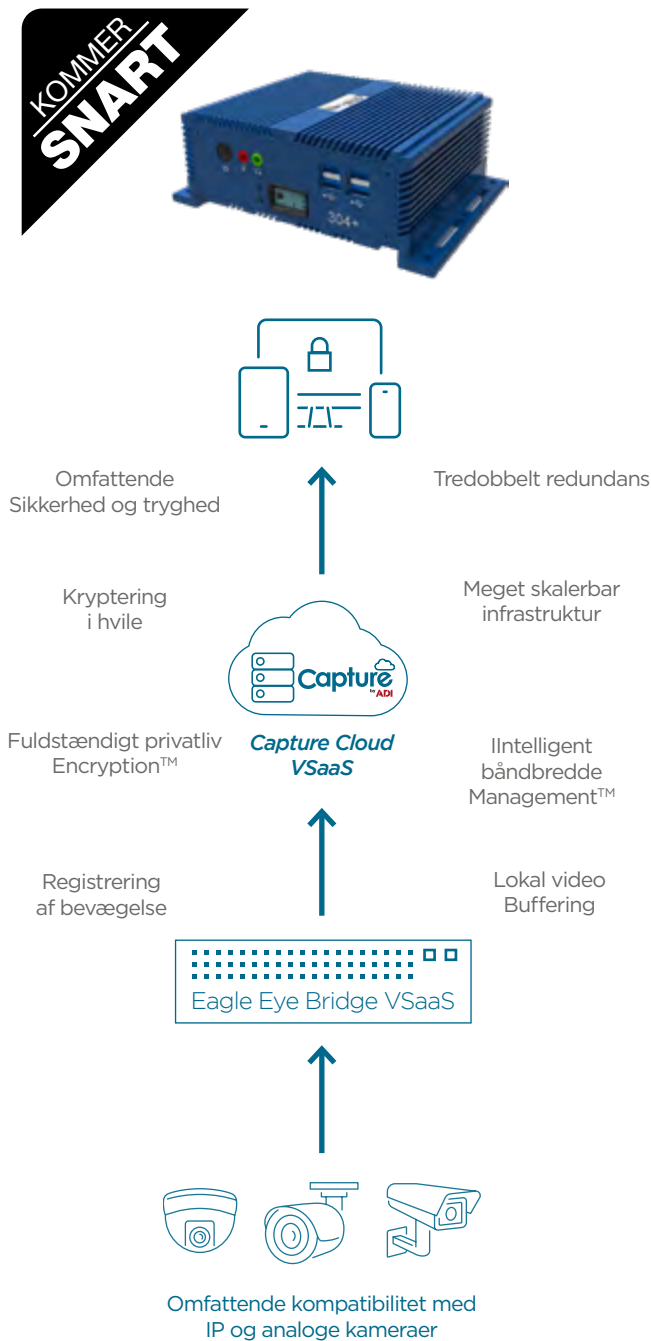
Sikkerhed forenklet

Med Eagle Eye Complete Privacy Encryption er videoen fuldt krypteret under transmission og i hvile. Eagle Eye Bridge har ingen åbne porte til internettet, hvilket eliminerer sikkerhedsårbarheder, der ofte findes i andre systemer, og kræver ingen router- eller firewalljusteringer.



Capture Cloud by ADI Compact Bridge 304+

Capture Cloud by ADI Bridge fungerer som en gateway fra dine lokationer til Capture by ADI Cloud Solutions-datacentret, hvor din video gemmes og administreres af Capture by ADI Cloud VSaaS. Det giver en sikker forbindelse, video båndbreddestyring og kameraovervågning. Disse små formfaktor bridges er velegnede til applikationer med op til 20 kameraer, når der ikke er et serverrack til rådighed. De kan monteres på væg eller hylde. Denne familie af bridges har aluminiumshuse, der er designet til at fungere i miljøer med en bred vifte af temperaturområder og inkluderer et display, der giver et hurtigt overblik over driftsstatus.



MODEL (R2-SU304PLUS)	Bridge 304+
Maks. antal kameraer (4MP)*	20 IP
Maks. antal analyser	5
Videobuffer	2 dage på stedet
Netværksporte	Dobbelt Gigabit
Videoudgang	HDMI (1), DP (1)
Dimension	180 x 127 x 64 mm 7.08 x 5.00 x 2.50 in
Maksimalt eksternt strømforbrug	External 100-240 VAC, 20 W
Driftstemperaturområde	-10-50° C 14-122° F
Luftfugtighed ved drift	0-70%
Certificeringer	FCC, UL, CE, UKCA, PSE, NOM, ACM, RoHS, CTick, WEEE, NDAA

CAPTURE CLOUD BY ADI VSAAS
ABONNEMENTSPRISER



KOMMER
SMART

Funktioner til optagelse

- Video krypteret i transit og i hvile
- Fuldt cloud-baseret administration
- Intelligent styring af båndbredde med lokal buffering
- Bevægelsesoptagelse eller kontinuerlig optagelse
- Valgfri lydoptagelse

Webinterface / mobile funktioner

- Indbyggede apps til iOS og Android
- Se live og optaget video
- Kompatibel med alle moderne browsere
- Bevægelsesregistrering med alarmer
- Visning af kort og grundplaner

Administration af systemet

- 100 % browserbaseret; ingen software
- Granulær brugergodkendelse
- Understøttelse af flere steder
- Del video med peg og klik
- Centraliseret administration

Funktioner til netværk

- Automatisk netværkskonfiguration
- Sikker kameranetværk (dobbelte netværksporte)
- Ingen indgående forbindelser nødvendige
- Registrering/rapportering af pakkeab
- Advarsler om afbrudt netværk

Funktioner til administration

- Fjernadministration
- Automatisk opdagelse af kameraer
- Automatisk kamerakonfiguration
- Avanceret bevægelsesregistrering
- Lokal buffering af video
- Konfiguration synkroniseret til skyen
- Advarsler om kameraproblemer
- Advarsler om internetudfald
- Fuldt cloud-baseret administration

Analyse

Registrering af indtrængen

- Registrerer, når et objekt kommer ind i et foruddefineret område
- Genererer en notifikation, når et objekt kommer ind i det forbudte område

Krydsning af linjer

- Registrerer, når et objekt krydser en virtuel linje
- Retning kan specificeres
- Genererer notifikationer, når en sikkerhedsgrænse krydses

Ophold (hængende)

- Bruges til at generere en advarsel, når et bevægeligt objekt forbliver i et foruddefineret område i et bestemt tidsrum.

Optælling af objekter

- Tæller, hvor mange objekter der krydser en linje i begge retninger.
- Det samlede antal pr. dag, pr. retning og det aktuelle delta for optællingen vedligeholdes og vises.

Sabotage

- Sender en alarm, hvis nogen blokerer eller beskadiger kameraets udsyn

Analysen af objektælling er tilgængelige mod et ekstra gebyr pr. kamera pr. måned. Alle andre analyser er inkluderet som en del af standardlicensen..

FOR MERE INFORMATION

DOWNLOAD VORES
CAPTURE CLOUD BY ADI
BROCHURE



STANDARD SUPPORT

- Gratis med et aktivt abonnement
- Garanti - 2 år
- 24/7 support via telefon, e-post og web

KOMMER
SMART



3rd Party IP Cameras
Onvif Profil S



PoE Switch



Capture
by ADI



Capture IP Cameras
Onvif Profil S



PoE Switch



Any Brand



HD Analog Cameras
Onvif Profil S



**3rd Party
Encoder**



FOR MORE INFORMATION
CONTACT YOUR ADI SALES PERSON

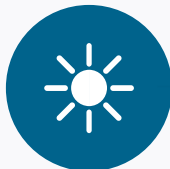
Capture
by ADI

Cloud Service



**KOMMER
SMART**





DAY & NIGHT

Dag- og natkameraer, der automatisk justerer fra farvebilleder om dagen, til sort/hvid-billeder om natten eller i situationer, hvor der er minimalt eller intet omgivende lys.



5MP IP

5MP med en opløsning på 2608x1960 pixels. Giver et klart og skarpt billede.



INDBYGGET MIKROFON

Muliggør samtidig video- og lydstreaming over netværket til en NVR eller computer.



POE / 12VDC

Hvert kamera har PoE- og 12VDC-strømforsyningsmuligheder. PoE-funktionen muliggør nem plug-and-play-forbindelse til NVR'erne i Capture by ADI-serien.



IP66

IP66

IP66 giver høj beskyttelse mod støv og fugt. IP66-klassificerede kameraer kan installeres udendørs uden at bekymre sig om skader fra vejr og vind.

R4052A



SD

SD CARD SLOT

Understøtter op til 256 GB Micro SD/SDHC/SDXC til lokal optagelse.

30M
IR

30M IR

Indbyggede IR (infrarøde) lysdioder til billeder i høj kvalitet om natten.



ANVENDELSESOMRÅDER

Dette kamera er et ideelt valg til mange forskellige områder, fra kommercielle installationer til private boliger.

Fremstillet i Taiwan

BEGRÆNSET LIVSTIDSGARANTI

Capture

by ADI

Capture by ADI-serien indeholder alle de komponenter, der skal til for at skabe en sikker vervågningsløsning.

Vælg mellem kameraer med fast linse, varifokal linse eller motoriseret zoom sammen med NVR'er, der passer til de fleste installationer - fås med 4, 8 eller 16 kanaler.

3 ÅRS GARANTI



Kombiner CAPBTD04W/CAPBCR06W med CAPBTR08W for en enkel løsning til mastemontering.


CAPETD01W

Weatherproof Back Box


CAPETD03W

Weatherproof Back Box


CAPBTD04W

L Shaped Wall Bracket


CAPBCR05W

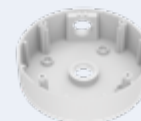
Weatherproof Back Box


CAPBCR07W

Weatherproof Back Box


CAPBTR08W

Pole Mount Adaptor for BTD04W


CAPETD09W

Weatherproof Back Box

Fixed Lens


CAP5R4052A
5MP Turret IP Camera

- 2.8mm, 30M IR
- Built in MIC
- SD Card Slot


CAP5R9152A
5MP Bullet IP Camera

- 2.8mm, 30M IR
- Built in MIC
- SD Card Slot

Varifocal Lens



CAP5R9252AX

5MP Bullet IP Camera

- 2.8-12mm, 45M IR
- 2 Way Audio Path
- Additional MIC & speaker required
- SD Card Slot

Motorized Zoom Lens



CAP5R6552X

5MP Turret IP Camera

- 2.8-8mm, 30M IR
- Auto Zoom / Focus



CAP5R4152AX

5MP Turret IP Camera

- 2.8-12mm, 45M IR
- 2 Way Audio Path
- Additional MIC & speaker required
- SD Card Slot



CAP5R6452X3

5MP Dome IP Camera

- 2.8-12mm, 30M IR
- Auto Zoom / Focus
- SD Card Slot



CAP5R4252AX

5MP Dome IP Camera

- 2.8-12mm, 45M IR
- 2 Way Audio Path
- Additional MIC & speaker required
- SD Card Slot



CAP5R8952X3

5MP Bullet IP Camera

- 2.8-12mm, 30M IR
- Auto Zoom / Focus
- SD Card Slot

3 ÅRS GARANTI

Vores PoE-integrerede NVR'er giver en omkostningseffektiv og praktisk løsning til installationer - med både optagelse og strømforstyrning i en enkelt enhed, hvilket eliminerer behovet for yderligere PoE-switcher.



CAPNVR3104E

NVR 4 Channel PoE NVR

- 4 channel, 4 PoE
- Max 10TB HDD
- 120FPS
- 65W

CAPNVR3108E

NVR 8 Channel PoE NVR

- 8 channel, 8 PoE
- Max 10TB HDD
- 240FPS
- 96W

CAPNVR3116E

NVR 16 Channel PoE NVR

- 16 channel, 16 PoE
- Max 10TB HDD
- 480FPS
- 195W



Full HD LED overvågningsskærme

Oplev Full HD
sikkerhedsovervågning.

Alle Capture-skærme leveres
med 3 års producentgaranti
som standard.

3 ÅRS GARANTI



NEW
@
ADI

CAP-22VGHDMI3-P

22" HDMI VGA Frameless Monitor

- 21.5" 1920 x 1080P Full HD resolution
- Designed specifically for 24/7 monitoring
- 178° Ultra-wide viewing angle
- Source auto detection
- Low blue light technology
- HDMI, VGA & Audio inputs
- Weight: 2.2kg



NEW
@
ADI

CAP-24VGHDMI3-P

24" HDMI VGA Frameless Monitor

- 23.8" 1920 x 1080p Full HD Resolution
- Designed specifically for 24/7 monitoring
- 178° Ultra-wide viewing angle
- Source auto detection
- Low blue light technology
- HDMI, VGA & Audio inputs
- Weight: 2.2kg



NEW
@
ADI

CAP-27VGHDMI3-P

27" HDMI VGA Frameless Monitor

- 27" 1920 x 1080p Full HD Resolution
- Designed specifically for 24/7 monitoring
- 178° Ultra-wide viewing angle
- Source auto detection
- Low blue light technology
- HDMI, VGA & Audio inputs
- Weight: 2.2kg



WBXMP19

18.5" HD LED Monitor

- 18.5" HD ELED screen
- 1366 x 768 screen resolution
- Designed specifically for 24/7 monitoring
- HDMI, VGA & Audio Inputs
- Weight: 2.6kg



WBXMP22

21.5" HD LED Monitor

- 21.5" HD ELED screen
- 1920 x 1080 screen resolution
- Designed specifically for 24/7 monitoring
- HDMI, VGA & Audio Inputs
- Weight 3.6kg



WBXML20

19.5" Full HD LED Monitor

- 19.5" HD ELED screen
- 1920 x 1080P screen resolution
- Designed specifically for 24/7 monitoring
- BNC, HDMI, VGA & Audio inputs
- Weight 2.8kg



WBXML22

21.5" Full HD LED Monitor

- 21.5" HD ELED screen
- 1920 x 1080P screen resolution
- Designed specifically for 24/7 monitoring
- BNC, HDMI, VGA & Audio inputs
- Weight 3.4kg



WBXML24

23.5" Full HD LED Monitor

- 23.5" HD ELED screen
- 1920 x 1080P screen resolution
- Designed specifically for 24/7 monitoring
- BNC, HDMI, VGA & Audio inputs
- Weight 4kg



WBXML32

32" Full HD LED Monitor

- 31.5" HD ELED screen
- 1920 x 1080P screen resolution
- Designed specifically for 24/7 monitoring
- BNC, HDMI, VGA & Audio inputs
- Weight 10.3kg



4K UHD-skærme

Oplev ægte 4K
sikkerhedsovervågning

Alle Capture-skærme leveres
med 3 års producentgaranti som
standard.

3 ÅRS GARANTI



WBXML4K28

4K 28" LED Monitor

- 28.5" 4K UHD ELED screen
- 3840 x 2160 screen resolution
- Designed specifically for 24/7 monitoring
- HDMI, USB, VGA, DVI, BNC & Audio Inputs
- Weight 8.7kg



WBXML4K43

4K 43" LED Monitor

- 43" UHD 4K LED screen
- 3840 x 2160 screen resolution
- Designed specifically for 24/7 monitoring
- HDMI, USB, VGA, DVI, BNC & Audio Inputs
- Weight 11kg



WBXML4K49

4K 49" LED Monitor

- 49" UHD 4K LED screen
- 3840 x 2160 screen resolution
- Designed specifically for 24/7 monitoring
- HDMI, USB, VGA, DVI, BNC & Audio Inputs
- Weight 14.5kg



WBXML4K55

4K 55" LED Monitor

- 55" UHD 4K LED screen
- 3840 x 2160 screen resolution
- Designed specifically for 24/7 monitoring
- HDMI, USB, VGA, DVI, BNC & Audio Inputs
- Weight 19.2kg



Test Monitor

WBXMLTEST

- Supports Analogue
IPC(H.264/ H.265/ 4K), AHD 3.0, TVI 3.0,CVI 3.0 Camera
- Step by step IPC test, quickly locate failure
- ONVIF highly compatible
- Ergonomic design, single hand operation
- Real time operation prompt
- 12V/1A power output
- Dual 100M network port, capable of detecting packet lost, monitoring network flow
- TDR RJ45 Cable Test
- 4.0 inch all viewing angle display, 800X480 resolution, 16.7M colour
- Swing keyboard input, QWERTY
- Changeable Li-polymer battery; battery working time 5 hours
- Rubberised Protective Casing
- Dual LED torch

1 ÅR GARANTI

WBXMLTBAT

Spare Battery for Test Monitor WBXMLTEST





Holdbar og pålidelig



UltraTech by ADI er holdbare og pålidelige batterier og strømforsyninger, der kan forsyne alarmsystemer i industri- og boligsektoren.

Se side 30-31 for et komplet udvalg af batterier.



BEGRÆNSET LIVSTIDSGARANTI

HDMI Cables - 4K 30Hz

HDMI V1.4 Cables suitable for Capture by ADI 24/7 security monitors



Interconnect HDMI high speed cable

- HDMI to HDMI cable
- V1.4, 30AWG, 4K, 30Hz
- Gold plated
- Black

WBXHDMI01	1m
WBXHDMI02	2m
WBXHDMI03	3m
WBXHDMI05	5m
WBXHDMI10	10m

HDMI Cables - 4K 60Hz UHD

HDMI V2.0 Cables suitable for Capture by ADI 24/7 security monitors



Interconnect HDMI high speed cable

- HDMI to HDMI cable
- V2.0, 30AWG, 4K, 60Hz, UHD
- Gold plated
- Black

WBXHDMI01V2	1m
WBXHDMI02V2	2m
WBXHDMI03V2	3m
WBXHDMI05V2	5m
WBXHDMI10V2	10m
WBXHDMI15V2	15m

BEGRÆNSET LIVSTIDSGARANTI

WBXMB1330TM**Monitor Tilt Bracket**

- Wall mount monitor bracket
- Tilt only action
- Tilt: 0 to -12 degree
- Vesa mount: 75x75 & 100x100mm
- Load capacity: 15kg (max)
- Black

WBXMB1342TSD**Monitor Bracket Double Swivel & Double Tilt**

- Wall mount monitor bracket
- Double arm tilt and swivel
- Tilt: +15 to -15 degree
- Vesa mount: 200x200mm (Max)
- Load capacity: 25kg (Max)
- Black

WBXMB3265TM**Monitor Bracket Tilt**

- Wall mount monitor bracket
- Monitor size Up to 65"
- Tilt: +8 to -12 degree
- Vesa mount: 400x400mm (Max)
- Load capacity: 50 kg (Max)
- Black

WBXMB1332TSS**Monitor Bracket Single Swivel & Tilt**

- Wall mount monitor bracket
- Single arm tilt and swivel
- Tilt: +15 to -15 degree
- Vesa mount: 200x200mm (Max)
- Load capacity: 25kg (Max)
- Black

AVARRO™

AV-løsninger designet til professionelle

AVARRO leverer AV-løsninger konstrueret til de hårdeste applikationer og med overlegen kvalitet til bolig- og kommercielle installationer.



BEGRÆNSET LIVSTIDSGARANTI



3 ÅRS GARANTI



3 ÅRS GARANTI

WBXUSBE1

100m USB Extender

- Provides support for any full-speed (12 Mb/s) or low-speed (1.5 Mb/s) USB device
- Downstream connector: Female, Type "B", USB approved connector
- Up stream connector: Male, Type "A", USB approved connect.

WBXDPHDMI4

Display port to HDMI Converter

- Support display port 1.1a/1.2 input, HDMI 1.3b/1.4b output and compatible with Thunderbolt input port
- Support 3D HDMI supports audio output
- Compatible with HDTV, display, monitor, projector and the other peripherals with HDMI interface

WBXHDME61R

60m HDMI Extender

- Supports 3D
- Supports 8/10/12 bit colour depth
- Supports AWG26 HDMI standard cable, input 15m, output 20m



HDMI Splitter

- Supports 3D video format
- HDR 4K*2K
- HDMI 1.4 HDCP1.4
- RGB format

WBXHDMIS2 x2 HDMI Output

WBXHDMIS4 x4 HDMI Output



Gør det muligt for to kameraer eller netværksenheder at fungere på en enkelt CAT 5- eller 6-kabel



ADI-POE-MP2

PoE Cat5 & 6 Multiplexer

- Easy installation, plug and play
- 100m transmission distance
- CAT 5 or 6 cable compatible
- Does not require PSU or POE injector
- Transmits video, 485 or audio

1 ÅR GARANTI



Professionel og pålidelig

ADI PRO er et eksklusivt brand, der tilbyder et bred vifte af produkter inden for kabelløsninger samt værktøj og hardware.



Professionel, pålidelig, stor værdi

ADI PRO leverer professionelle, kvalitetsprodukter og enestående værdi uden at gå på kompromis

Vores forpligtelse over for dig

Fuldt testet, fuldt lagerført og understøttet af en konkurrencedygtig garanti, ADI PRO's eksklusive produkter opfylder eller overgår branchens standarder

Construction Products Regulation (CPR) Euro klasser

De fleste kabler, der er designet til permanent installation i boliger og erhvervsbygninger er omfattet af Byggevareforordningen - Construction Products Regulation (CPR).

Forordningen fastsætter krav til sikkerhed og ydeevne i tilfælde af brand og klassificerer produkter i en af syv euroklasser.

Disse klasser har processer til vurdering af brandegenskaber baseret på BS EN 60332-1-2, BS EN 50399 50399 og BS EN ISO 1716.

Selvom forordningen klassificerer produkter i en af de syv Euroklasser, er der i de fleste tilfælde kun fem for kabler. Størstedelen vil falde ind under klasserne B2ca til Eca.

Det blev et krav i 2017, så det er vigtigt at forstå, hvordan man opfylder kravene.

Hvem er ansvarlig?

Alle parter i hele forsyningskæden fra producent til slutbruger har et ansvar for at sikre CPR-overholdelse.

Konstruktører og installatører skal sikre, at de kabler, de vælger, er egnede til brandrisici i bygningen eller anvendelserne og eventuelle kontraktlige betingelser.

CPR dækker den måde, hvorpå et produkt placeres på markedet. Afgørende er, at den ikke specificerer typen af produkt der skal bruges på et givet tidspunkt.

Reaktion på brand BS EN ISO 1716

Eksempel på miljø

Aca
Euro Class

- Ingen reaktion på brand
- Bidrager ikke til brandspredning/varmeudvikling

Det vil være næsten umuligt for et kabel at opfylde klasse Aca, og på grund af tilgængeligheden bør de kun specificeres med ekstrem forsigtighed

Reaktion på brand BS EN 50399

Eksempel på miljø

B1ca
Euro Class

- Meget lav reaktion
- Minimalt bidrag til brandspredning / varmeudvikling

Det er meget usandsynligt, at almindeligt anvendte kabler vil blive klassificeret som klasse B1ca

B2ca
Euro Class

- Lav reaktion
- Brændbar, lavflammespredning & varmeafgivelse bidrager til brand

Hospitaller og lufthavne, offentlige bygninger bygninger med mange mennesker

Cca
Euro Class

- Reduceret reaktion
- Brændbar, moderat flammespredning og varmeafgivelse

Offentlige bygninger, hoteller, skoler eller kontorbygninger med mange mennesker

Dca
Euro Class

- Øget reaktion
- Brændbart, moderat flammespredning og varmeudvikling

Minimale kabelkrav til generel installation i visse områder

Reaktion på brand BS EN 60332 1-2

Eksempel på miljø

Eca
Euro Class

- Reaktion
- Brændbar, begrænset brandspredning mindre end 425 mm

Minimale kabelkrav til generel installation i visse områder

Fca
Euro Class

- Ubestemt, uklar
- Brændbar, kan have høje niveauer af brændbarhed mere end 425 mm

Mere sandsynligt til udendørs brug

Klasserne A til E skal testes af et uafhængigt, autoriseret laboratorium. De fleste kabler falder inden for klasserne B2ca til Eca. Fca-kabler testes ikke. Kabler med Fca-klassificering er for det meste beregnet til udendørs installationer.

10 ÅRS GARANTI



Intrusion Alarm Wire

- PVC
- Type 2
- 100m
- White

ADI-6CT2PVCWH100 6 core

ADI-8CT2PVCWH100 8 core

ADI-12CT2PVCWH100 12 core



Intrusion Alarm Wire

- LSZH
- Type 1
- 100m
- White

ADI-6CT1LSZHWH100 6 core

ADI-8CT1LSZHWH100 8 core

ADI-12CT1LSZHWH100 12 core



Intrusion Alarm Wire

- PVC
- Type 3
- 100m
- White

ADI-8CT3PVCWH100 8 core



Intrusion Alarm Wire

- LSF
- Type 3
- 100m
- White

ADI-8CT3LSFWH100 8 core

Fire Wire



Enhanced Fire Alarm Wire

- 2 Core
- 1.5mm (Solid Bare Copper)
- Rated Voltage 300/500V
- FR 120 minutes
- CPR: LPCB
- UV LSZH
- Rated Temperature -30°C to +70°C

FC2C1.5FR120ENHR1 100m Red

FC2C1.5FR120ENHR2 200m Red

FC2C1.5FR120ENHW1 100m White

FC2C1.5FR120ENHW2 200m White



10 ÅRS GARANTI

ADIPRO			Category	CPR Classification (Euro Class) Reaction to Fire	Screening	Sheeth Material	Sheeth Colour	Length
UTP Cable Fca	Reaction to Fire BS EN 60332 1-2							
	ADIC5UTPPPEBLK305	Cat5E UTP Cable	5E	Fca	UTP	PE	Black	305m
	ADIC6UTPPPEBLK305	Cat6 UTP Cable	6	Fca	UTP	PE	Black	305m
UTP Cable Eca	Reaction to Fire BS EN 60332 1-2							
	ADIC5UTPPVPCGRY305	Cat5E UTP Cable	5E	Eca	UTP	PVC	Grey	305m
	ADIC6UTPPVPCGRY305	Cat6 UTP Cable	6	Eca	UTP	PVC	Grey	305m
	ADIC5UTPLSZHPUR305	Cat5E UTP Cable	5E	Eca	UTP	LSZH	Purple	305m
	ADIC6UTPLSZHPUR305	Cat6 UTP Cable	6	Eca	UTP	LSZH	Purple	305m
UTP Cable Dca	Reaction to Fire BS EN 50399							
	ADIC5UTPDCA2PUR305	Cat5e UTP Cable	5E	Dca s2,a2,d2	UTP	LSZH	Purple	305m
	ADIC6UTPDCA2PUR305	Cat6 UTP Cable	6	Dca s2,a2,d2	UTP	LSZH	Purple	305m
U/FTP Cable Dca	Reaction to Fire BS EN 50399							
	ADIC6AUFTPLSZHB305	Cat 6A U/FTP Cable	6A	Dca s1, a1, d2	U/FTP	LSZH	Ice Blue	305m
UTP Cable Cca	Reaction to Fire BS EN 50399							
	NEW ADIC6UTLSZHCAP305	Cat6 UTP Cable	6	Cca-s:1a -a:1 -d:1	UTP	LSZH	Purple	305m
FTP Cable Cca	Reaction to Fire BS EN 50399							
	NEW ADIC6FTLSZHCAP305	Cat6 FTP Cable	6	Cca-s:1a -a:1 -d:1	FTP	LSZH	Purple	305m
UTP Cable B2ca	Reaction to Fire BS EN 50399							
	NEW ADIC5UTLSZHB2P305	Cat5e UTP Cable	5E	B2ca-s:1a -a:1 -d:1	UTP	LSZH	Purple	305m
	NEW ADIC6UTLSZHB2W305	Cat6 UTP Cable	6	B2ca-s:1a -a:1 -d:1	UTP	LSZH	White	305m
	NEW ADIC6UTLSZHB2P305	Cat6 UTP Cable	6	B2ca-s:1a -a:1 -d:1	UTP	LSZH	Purple	305m
	NEW ADIC6UTLSZHB2GN305	Cat6 UTP Cable	6	B2ca-s:1a -a:1 -d:1	UTP	LSZH	Green	305m
	NEW ADIC6UTLSZHB2OR305	Cat6 UTP Cable	6	B2ca-s:1a -a:1 -d:1	UTP	LSZH	Orange	305m
FTP Cable B2ca	Reaction to Fire BS EN 50399							
	NEW ADIC6FTLSZHB2P305	Cat6 FTP Cable	6	B2ca-s:1a -a:1 -d:1	FTP	LSZH	Purple	305m
U/FTP Cable B2ca	Reaction to Fire BS EN 50399							
	NEW ADIC6AUFTLSB2IB305	Cat6A U/FTP Cable	6A	B2ca-s:1a -a:1 -d:1	U/FTP	LSZH	Ice Blue	305m

2 ÅRS GARANTI

NEW
@ADI

Patch Panel

- Current rating: 1.5Amp
- Insulation resistance: $\geq 500\Omega$
- Contact resistance: $\leq 10\text{M}\Omega$
- Dimensions: 482 x 45 x 133mm

ADI-PP-C5E-24-180 Cat5e

ADI-PP-C6-24-180 Cat6

NEW
@ADI

Wall Mount Cabinet

- 6U wall mount
- Load capacity 50kg
- Lockable and removable steel panels

ADI-WM-6U-450 W600 x D450mm

ADI-WM-6U-560 W600 x D560mm

NEW
@ADI

Wall Mount Cabinet

- 9U wall mount
- Load capacity 50kg
- Lockable and removable steel panels

ADI-WM-9U-450 W600 x D450mm

ADI-WM-9U-560 W600 x D560mm

NEW
@ADI

ADI-RM-PDU-6-UK

6 Way PDU

- 1U
- 6 x UK power sockets
- 1.8m power cord
- Neon On/Off rocker switch
- BSI standard UK power plug 13A BSI fuse

NEW
@ADI

ADI-WM-FAN-2-UK

Rack Fan Tray

- 1U
- 2 x fan units
- Thermostat controlled
- Pre-wired
- Reduced noise output

NEW
@ADI

ADI-WC-CN-50

Cage Nuts with Washers & Bolts

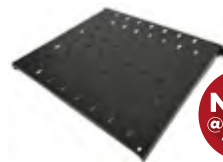
- 50 Pack

NEW
@ADI

ADI-WC-S-1U-350

19" Rack Mount Shelf

- 350mm Deep
- Black

NEW
@ADI

ADI-WC-S-1U-400

19" Rack Mount Shelf

- 400mm Deep
- Black

NEW
@ADI

ADI-C5E-C6-MOD-2

Module

- Cat5e & Cat6 compatible
- Current rating: 1.5Amp
- Insulation resistance: $\geq 500\Omega$
- Contact resistance: $\leq 10\text{M}\Omega$
- Contact compatibility: 26 to 23 AWG solid
- Dimensions: 50 x 25mm

CAT5e Cables 0.5m - 5m

BEGRÆNSET LIVSTIDSGARANTI



Cat5e RJ45 Patch Cable

- Cat5e
- RJ45 patch cable
- Colour: Grey
- Anti-Snag

WBXC5EGY0.5MP5	0.5m Pack of 5
WBXC5EGY1MP5	1m Pack of 5
WBXC5EGY2MP5	2m Pack of 5
WBXC5EGY3MP1	3m Single
WBXC5EGY5MP1	5m Single
WBXC5EGY10MP1	10m Single
WBXC5EGY15MP1	15m Single



Cat5e RJ45 Patch Cable

- Cat5e
- RJ45 patch cable
- Colour: Blue
- Anti-Snag

WBXC5EBL0.5MP5	0.5m Pack of 5
WBXC5EBL1MP5	1m Pack of 5
WBXC5EBL2MP5	2m Pack of 5
WBXC5EBL3MP1	3m Single
WBXC5EBL5MP1	5m Single
WBXC5EBL10MP1	10m Single
WBXC5EBL15MP1	15m Single



Cat5e RJ45 Patch Cable

- Cat5e
- RJ45 patch cable
- Colour: Red
- Anti-Snag

WBXC5ERD0.5MP5	0.5m Pack of 5
WBXC5ERD1MP5	1m Pack of 5
WBXC5ERD2MP5	2m Pack of 5
WBXC5ERD3MP1	3m Single
WBXC5ERD5MP1	5m Single
WBXC5ERD10MP1	10m Single
WBXC5ERD15MP1	15m Single



Produkter af professionel kvalitet uden at gå på kompromis

WBXRG59B1

RG59 CU 100m Drum

- RG59
- 100m drum
- Black

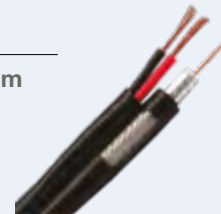


BEGRÆNSET LIVSTIDSGARANTI

WBXRG59100M2C

RG59 Shotgun CU 100m Drum

- RG59
- + 2 core for low voltage
- 100m drum
- Black



Se side 28 - 29 for kabler, tilbehør og værktøj

CAT6 Cables 0.5m - 5m

BEGRÆNSET LIVSTIDSGARANTI



Cat6 RJ45 Patch Cable

- Cat6
- RJ45 patch cable
- Colour: Grey
- Anti-Snag

WBXC6EGY0.5MP5 0.5m Pack of 5

WBXC6EGY1MP5 1m Pack of 5

WBXC6EGY2MP5 2m Pack of 5

WBXC6EGY3MP1 3m Single

WBXC6EGY5MP1 5m Single

WBXC6EGY10MP1 10m Single

WBXC6EGY15MP1 15m Single



Cat6 RJ45 Patch Cable

- Cat6
- RJ45 patch cable
- Colour: Blue
- Anti-Snag

WBXC6EBL0.5MP5 0.5m Pack of 5

WBXC6EBL1MP5 1m Pack of 5

WBXC6EBL2MP5 2m Pack of 5

WBXC6EBL3MP1 3m Single

WBXC6EBL5MP1 5m Single

WBXC6EBL10MP1 10m Single

WBXC6EBL15MP1 15m Single



Cat6 RJ45 Patch Cable

- Cat6
- RJ45 patch cable
- Colour: Red
- Anti-Snag

WBXC6ERD0.5MP5 0.5m Pack of 5

WBXC6ERD1MP5 1m Pack of 5

WBXC6ERD2MP5 2m Pack of 5

WBXC6ERD3MP1 3m Single

WBXC6ERD5MP1 5m Single

WBXC6ERD10MP1 10m Single

WBXC6ERD15MP1 15m Single



Single/Double Gang Face Plate

- 1 Pack
- Quality engineering plastic

ADI-FP-S-1
87 x 87 x 9mm

ADI-FP-D-1
140 x 87 x 9mm



ADI-HALF-BLNK-5

Quarter Blanking Plate

- 5 Pack
- 50 x 25 x 13.5mm
- High quality engineering plastic



ADI-QTR-BLNK-10

Half Blanking Plate

- 10 Pack
- 50 x 12.5 x 13.5mm
- High quality engineering plastic



BNC Crimp Connector

- RG59 BNC male crimp connector

WBXBNCM59P10 10 Pack

WBXBNCM59P50 50 Pack

BEGRÆNSET LIVSTIDSGARANTI



WBXBNC SRP10

BNC Strain Boot 10 Pack

- RG59 BNC strain boot
- 10 pack
- Black

BEGRÆNSET LIVSTIDSGARANTI



WBXBNC TOOL

BNC Insertion and Extraction Tool

- BNC Removal / Insertion
- Long Reach

BEGRÆNSET LIVSTIDSGARANTI



WBXRG59STIP

RG59 3 Blade Wire Stripper

- Coaxial cable stripper
- For RG58/RG59/RG6
- 3 blades

1 ÅR GARANTI



ADIs webshop

Køb markedsførende
sikkerheds-, brand
og Pro AV produkter 24/7

Vores webshop giver dig mulighed for at bestille når som helst, dag eller nat, udforske produkter og mærker og få oplysninger om lagertilgængelighed, når du har brug for det.

Opret en konto i dag
www.adiglobal.dk

1 ÅR GARANTI

WBXCATBTESER

RJ45 Tester

- 2 Piece set
- Check continuity of RJ11& RJ45 cable quickly
- LED status display
- Slow and fast test switch
- Simple to use



WBXRJ45CRIMP

RJ45 Crimp Tool

- RJ crimp tool
- RJ45/RJ12/RJ11
- With cable cutter & stripper



RJ45 Crimp connector

- Suitable for Cat5e cable

WBXC5ERJ45P10 Pack of 10

WBXC5ERJ45P100 Pack of 100

- Suitable for Cat6 cable

WBXC6ERJ45P10 Pack of 10

WBXC6ERJ45P100 Pack of 100



RJ45 Connector Rapid Fit

- Suitable for Cat5e cable

WBXC5ERAPID10 Pack of 10

WBXC5ERAPID100 Pack of 100

- Suitable for Cat6 cable

WBXC6ERAPID10 Pack of 10

WBXC6ERAPID100 Pack of 100



RJ45 CAT5/6 Strain Boots

- RJ45 strain boot
- Cat5e/Cat6

WBXCATSBP10 Pack of 10

WBXCATSBP100 Pack of 100



WBXCATCOUP

RJ45 CAT5/6 Coupler Each

- RJ45 coupler
- Cat5e & Cat6



WBXBNCFFCP10

BNC Coupler 10 Pack

- RG59 female - female connector
- 10 pack



WBXBNCM22FTP10

BNC T M-F 10 Pack

- RG59 BNC male - female T piece connector
- 10 pack



2 ÅRS GARANTI


UT-1213
BATTERY SLA 12V 1.3Ah

- T1 Terminal
- L97 x W48 x H53
- VdS
- UL94 HB


UT-1232
Battery SLA, 12V, 3.2Ah

- T1 Terminal
- L134 x W67 x H66mm
- UL94 HB


UT-1270
Battery SLA, 12V, 7Ah

- T1 Terminal
- L151 x W65 x H99.5mm
- UL94 HB


UT-12120
Battery SLA, 12V, 12Ah

- T2 Terminal
- L151 x W98 x H101mm
- UL94 HB


UT-121805
Battery SLA, 12V, 18Ah

- M5 Terminal
- L181.5 x W76.5 x H167.5mm
- UL94 HB


IM-CR123A-2PK
CR123A 3V Lithium Battery

- Flame resistant case
- 2 Pack


IM-CR2032
CR2032 3V Lithium Coin Battery - Each

- CR2032 "Lithium Coin" batteries high cell capacity allows for stable high voltage power used with variety of devices. The batteries design provides long-lasting reliable performance


IM-CR2
CR2 3V Lithium Battery - Each

2 ÅRS GARANTI

**UT-1220-FR****Fire Rated Battery SLA,
12V 2.0h**

- T1 Terminal
- L178 x W35 x H66
- Flame Resistant Case
- UL94 V-0

**UT-1232-FR****Fire Rated Battery SLA,
12V, 3.2Ah**

- T1 Terminal
- L134 x W67 x H66mm
- Flame Resistant Case
- UL94 V-0

**UT-1270-FR****Fire Rated Battery SLA,
12V, 7Ah**

- T1 Terminal
- L151 x W65 x H99.5mm
- Flame Resistant Case
- UL94 V-0

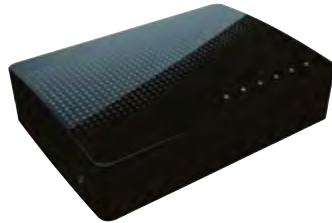
**UT-12120-FR****Fire Rated Battery SLA,
12V, 12Ah**

- T2 Terminal
- L151 x W98 x H101mm
- Flame Resistant Case
- UL94 V-0

**UT-121805-FR****Fire Rated Battery SLA,
12V, 18Ah**

- M5 Terminal
- L181.5 x W76.5 x H167.5mm
- Flame Resistant Case
- UL94 V-0

BEGRÆNSET LIVSTIDSGARANTI



0E-5PGIGUN-EU

5 Port Gigabit Unmanaged Ethernet Switch

- 5 x 10/100/1000 Mbps
- Easy set-up plug and play
- Switching capacity 10Gbps
- Port status LED indicator



0E-8P4POEGIG-EU

8 Port Fast Gigabit Ethernet PoE Switch

- 4 x 10/100/1000 Mbps PoE ports
- 4 x 10/100/1000 Mbps ports
- Easy set-up plug and play
- 62W PoE budget
- Port status LED indicator



0E-8P65W4POE-EU

8 Port Fast Ethernet PoE Switch

- 4 x 10/100 Mbps ports
- Easy set-up plug and play
- 62W PoE budget
- Port status LED indicator



0E-8PGIGUN-EU

8 Port Gigabit Unmanaged Ethernet Switch

- 8 x 10/100/1000 Mbps
- Easy set-up plug and play
- Switching capacity 10Gbps
- Port status LED indicator



0E-9P8POEGIG-EU

9 Port Fast Gigabit Ethernet PoE Switch

- 8 x 10/100/1000 Mbps PoE ports
- 1 x 10/100/1000 Mbps port
- Easy set-up plug and play
- 130W PoE budget
- Port status LED indicator

3 ÅRS GARANTI



WBXPSU4024IP

External IP Rated Power Supply

- Input: 230VAC/50Hz, 3A fuse
- Output: 1 x 4A or 4 x 1A
- Output voltage: 24VAC
- Operating temperature: -10° C to +40° C
- PTC fuse: Automatic reset
- IP protection rating IP66
- Weight: 2.8kg
- Dimensions: 27cm x 15cm x 8.9cm

Perfect for external camera applications. Non battery backed IP rated boxed PSU's.

3 ÅRS GARANTI



WBXPSU5012IP

External IP Rated Power Supply

- AC110-230VAC
- Output: 12V DC @ 1 x 5A or 8 x 0.8A
- Auto Reset PTC Fuse
- -10 to +40C
- IP66
- 1.2Kg, Dimensions: 27 x15 x 8.9cm

Ideal for small 12vdc camera installations. Splitter available for inline PSU's with up to 4 outputs.



WBXIL2024-EU

3 ÅRS GARANTI

Power Inline PSU

- 24V AC
- 2Amp
- UK Plug



UT-IL4024-IP-EU

3 ÅRS GARANTI

IP Rated Power Inline PSU

- 24V AC
- 4Amp
- IP65 Rated
- UK Plug



WBXPSUSP4

BEGRÆNSET LIVSTIDSGARANTI

Female DC to 4 way DC Splitter

- DC Plug with 5.5*2.1mm connector
- Black PVC
- Nickel plated



3 ÅRS GARANTI

Power Inline PSU

- Inline power supply
- 12V DC output
- 1.2m DC cable
- 5.5*2.1mm plug

WBXIL10EU	1 Amp
WBXIL20EU	2 Amp
WBXIL35EU	3.5 Amp
WBXIL50EU	5 Amp

3 ÅRS GARANTI



WBXDC-MALE

DC Jack Male 10 pack

- 2.1mm connector
- Nickel plated



WBXDC-FEMALE

DC Jack Female 10 Pack

- 2.1mm connector
- Nickel plated



3 ÅRS GARANTI



13.8V Switch Mode PSU in Metal Box

Perfect for Intrusion Systems (Non PD:6662 compliant).
Any 12vdc systems requiring battery back up.

- Boxed power supply
- 13.8V DC output
- Tamper (lid & rear)
- Mains, battery, output & fault LED
- Enclosure - 200 x 240 x 75mm
- Battery compartment - 190 x 130 x 70mm

WBXPSU1A12VT	1Amp
---------------------	-------------

WBXPSU2A12VT	2Amp
---------------------	-------------

WBXPSU3A12VT	3Amp
---------------------	-------------

WBXPSU5A12VT	5Amp
---------------------	-------------

5 Amp

- Battery compartment - 350 x 220 x 80mm

24VDC Power Supply Units

Perfect for Fire systems (Non EN54-4 compliant).
Any other 24vdc systems requiring battery back up.



- Input 90 to 264 Vac
- Output: nominal 27.6VDC
- Short circuit overload protection
- Mains transient protection
- Anti-tamper, front and rear
- Back up battery requires 24VDC

WBXPSU1A24VDT	1Amp
----------------------	-------------

WBXPSU2A24VDT	2Amp
----------------------	-------------

WBXPSU3A24VDT	3Amp
----------------------	-------------

WBXPSU5A24VDT	5Amp
----------------------	-------------

WBXPSU10A24VDT	10Amp
-----------------------	--------------

24VDC Transformer Rectifier Power Supply Units

Designed to power 24vdc Door Retainers, with fire alarm input relay control. For use when battery back up is not required.



- Input 90 to 264 Vac
- Output: regulated 24VDC
- Lid tamper protection
- Selectable NO/NC input for relay
- External DC24V voltage input for relay

WBXPSU1A24VDST	1Amp
-----------------------	-------------

WBXPSU2A24VDST	2Amp
-----------------------	-------------

WBXPSU4A24VDST	4Amp
-----------------------	-------------

3 ÅRS GARANTI

Designed to offer multiple 12vdc outputs for CCTV installations. Non battery backed boxed PSU's.



WBXPSUC12V5A4

**Power Multi Output PSU
Up to 4 way 5A**

- CCTV Boxed power supply
- Multi output
- Metal enclosure
- Upto 4 way
- Max 5Amp



WBXPSUC12V10A9

**Power Multi Output PSU
Up to 9 way 10A**

- CCTV Boxed power supply
- Multi output
- Metal enclosure
- Upto 9 way
- Max 10Amp



WBXPSUC12V16A16

**Power Multi Output PSU
Up to 16 way 16A**

- CCTV Boxed power supply
- Multi output
- Metal enclosure
- Upto 16 way
- Max 16Amp

Ideal for multiple applications when a mixture of 12 and 24vdc power is required. Intrusion, access control, general use requiring battery back up.



NEW @ ADI

UT-PSU12-24V4-2A-1

**12/24Vdc Switchable PSU
with Battery Backup**

- 12/24vdc switchable PSU 4/2 Amp
- Single output
- Tamper switch - front & rear
- Space for 2 x 7AH batteries



NEW @ ADI

UT-PSU12-24V8-4A-1

**12/24Vdc Switchable PSU
with Battery Backup**

- 12/24vdc switchable PSU 8/4 Amp
- Single output
- Tamper switch - front & rear
- Space for 2 x 7AH batteries



NEW @ ADI

UT-PSU12-24V8-4A-8

**12/24Vdc Switchable PSU
with Battery Backup**

- 12/24vdc switchable PSU 8/4 Amp
- 8 x 1 amp @ 12vdc via Fire input Fuse Board
- Tamper switch - front & rear
- Space for 2 x 7AH batteries

3 ÅRS GARANTI


 NEW
@
ADI

ADI-RTE-SS-GD
Dome RTE Button

- Surface Mount
- 2A @ 30VDC
- Stainless Steel
- Green Dome
- Single Gang

WBXRTE1
No Touch RTE Switch

- Surface Mount
- 12 - 24VDC
- Stainless Steel
- No Touch
- Single Gang

WBXRTE1
RTE Switch with Back Box

- Surface Mount
- 10A @ 250VAC
- Plastic
- Single Gang
- Single Pole


WBXEGDP
Break Glass Surface

- Resettable
- Green
- Surface Mount
- Double Pole

WBXEGSP
Break Glass Surface

- 8A @ 24VDC
- 5A @ 220VAC
- Resettable
- Green
- Surface Mount
- Single Pole

WBXEGSD-COVER
Cover for WBXEGSP & EGDP
WBXEGKEY
Test and Reset Keys for the WBXEDSP and WBXEGDP

- Pack of 10





ADI-BGU-TP-G

Break Glass Unit

- Resettable
- Surface Mount
- Triple Pole
- Illuminated
- Flashing & audio on activation



ADI-BGU-TP-KEY

- Reset Key for ADI-BGU-TP-G



ADI-BGU-TP-COVER

- Replacement cover for ADI-BGU-TP-G



ADI-H26-I-N-PK25

Access Card

- 26bit, H10301
- Programmed
- Comparable HID
- 26bit Wiegand
- Printable PVC
- 25-pack



ADI-H26-F-N-PK25

Access Fob

- 26bit, H10301
- Programmed
- Comparable HID
- 26bit Wiegand
- Material ABS
- 25-pack

UltraTech[®] POWER PRODUCTS by ADI

Primarily designed for Paxton & ACT access control systems. Can also be used in conjunction with many other access systems requiring battery back up.



UT-ACCESS-PSU2

Access Power Supply, upto 2 boards*

- 12VDC; 5Amp
- Footprint for 2 x Paxton or 2 x ACT controllers
- Output voltage: 13.2~13.8vdc (13.8 nominal)
- Battery output voltage: 10.0~13.2vdc
- Tamper: front and rear
- Indicators: battery/mains/door unlocked/fault
- Number of outputs: 4



UT-ACCESS-PSU-6

Access Power Supply, upto 6 boards*

- Selectable 12 or 24VDC
- 8 or 4Amp
- Footprint for 6 x Paxton or 6 x ACT controllers
- Output in 12v mode: 13.2~14.0vdc (13.8vdc nominal) 8A max
- Output in 24v mode: 27.0~28.0vdc (27.6vdc nominal) 4A max
- Tamper: front and rear
- Indicators: mains and fault
- Number of outputs: 8

*controllers and battery NOT included.


WBX280S
Unmonitored Magnetic Lock

- Surface magnet, unmonitored
- 280Kg, 12/24 VDC Selectable

3 ÅRS GARANTI


WBX280S-M
Monitored Magnetic Lock

- Surface magnet, monitored
- 280Kg, 12/24 VDC Selectable

3 ÅRS GARANTI


WBX280AS
Magnet Arm Housing for WBX280

BEGRÆNSET LIVSTIDSGARANTI

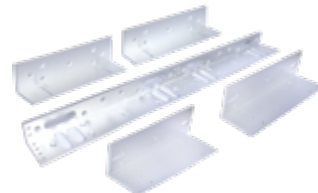

WBX280ZL
Magnet Z & L Bracket

- To Fit WBX280S & WBX280S-M

BEGRÆNSET LIVSTIDSGARANTI



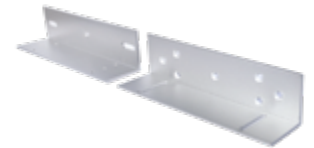
3 ÅRS GARANTI



BEGRÆNSET LIVSTIDSGARANTI



3 ÅRS GARANTI



BEGRÆNSET LIVSTIDSGARANTI

WBX280S-D-M
Double Magnetic Lock Monitored

- 280Kg holding force
- Surface mount

WBX280ZL-D
Double Z&L Bracket for WBX280S-D-M

- Satin anodised aluminium

WBX500S-M
Monitored Magnetic Lock

- 500Kg holding force
- Single magnet
- Surface mount

WBX500ZL
Z & L Bracket for WBX500S-M

- Satin anodised aluminium


Door Loop
WBX30DL 30cm
WBX45DL 45cm

BEGRÆNSET LIVSTIDSGARANTI


WBX280ZL-AH-S
Z & L Bracket

- To suit WBX280 Range of Mag Locks
- Satin anodised aluminium


WBX500AS
Armature Housing to fit WBX500S-M

- Satin anodised aluminium



BEGRÆNSET LIVSTIDSGARANTI


ADI-ST-ML
Mag Lock Safety Straps

- For 280 & 500 Kg Mag Locks

ADI PÅ DIN MÅDE

Uanset hvordan du vil handle,
er ADI der for dig.



Pick Up in Branch



Order Online



Get Expert Support



Let at bestille

ADI giver dig mulighed for at handle online, i butikken eller ringe og tale med et af vores salgsteams.

www.adiglobal.dk • 43 24 56 00 • salg.dk@adiglobal.com



BEGRÆNSET LIVSTIDSGARANTI

WBXA4DOCR

A4 Document Box Red



3 ÅRS GARANTI

WBXELB3W

Emergency Lighting 3W
Maintained Bulkhead



3 ÅRS GARANTI

WBXELES3W

Emergency Lighting Sign
3W Exit Sign IP20



BEGRÆNSET LIVSTIDSGARANTI



WBXFIRELOGBOOK

Fire Log Book

- 32 pages
- Comprehensive record keeping detail
- Records detail of
 - System design
 - Installation
 - Inspection and maintenance



WBXGLRED10

- Red Glands
- 10 Pack
- Cable ø 6-12mm
- Rating UL94 V-2



WBXSHRED10

- Red Gland Shrouds
- 10 Pack
- Rating UL94 V-2

BEGRÆNSET LIVSTIDSGARANTI



NEW @ ADI

ADI-ISO-R-S

Single Gang Mains
Powered

- Operating voltage: 100~240 Vac
- Switch contact: double pole (live and negative)
- Fuse rating: 230Vac, F4A
- Switch surge rating: 80A
- Key can be removed in both ON and OFF positions

3 ÅRS GARANTI



WBXCT200SS

Stainless Steel Cable Ties
(Pack of 100)

- Pack of 100
- AISI204 Stainless steel

WBXCT400SS

Stainless Steel Cable Ties
(Pack of 100)

- Pack of 100
- AISI204 Stainless steel

3 ÅRS GARANTI



WBXELTS3WI20

Emergency Lighting IP20
LED Twin Spot 3W



WBXELTS3WI65

Emergency Lighting IP65
LED Twin Spot 3W

BEGRÆNSET LIVSTIDSGARANTI



WBXCBLI

Back Box Lid, Seal & Screws



WBXFUSEKIT

Intruder Fuse Kit -
18 Fuses x 5



WBXRESKIT

Intruder Resistor Kit
9 Resistors x 30



WBXCBSSE

Back Box Galvanised Stop
End, 20mm



WBXCBTB

2-Way Galvanised Back
Box, 20mm



WBXCUB

Galvanised Back Box,
U-Bend, 20mm

Available Exclusively at ADI

Komplet serie med dørlukningscentral, strømforsyning og batteri backup.

Godkendt efter EN14657 til døre og porte.



610-1688

ABDL 4000 Central

- Ny model
- Maks. 500mA belastning, EN14637 godkendt.
- Service indikator



610-1714

TR 4000 Strømforsyning til ABDL 4000 serien

- 1,5A
- Ny model



610-1715

NS 4000 Batteri back-up til ABDL 4000 serien

- Ny model



P-ABDL Orbis-lille

ABDL Pakke med 2 Orbis detektor/ Sokler + Vægmagnet 50 kg

- Indeholder; 610-1688 ABDL 4000 Kontrolenhed, 2x ORB-OP-12001-APO Orbis røgdetektor, optisk, 2x ORB-MB-00001-APO Orbis-sokkel & 1350-CSA Dørholder Væg 50 kg. m. Anker.



P-ABDL Orbis-stor

ABDL Pakke 2x Orbis detektor med Sokler, ASSA Abloy magnet/Anker 50kg, Fuga udtryk og 10x Label "ABDL"

- Indeholder; 610-1688 ABDL 4000 Kontrolenhed, 2x ORB-OP-12001-APO Orbis røgdetektor, optisk, 2x ORB-MB-00001-APO Orbis-sokkel & 1350-CSA Dørholder Væg 50 kg. m. Anker.



P-ABDL S-65-Lille

ABDL Pakke med 2 S-65 detektorer/ plinter + vægmagnet 50 kg

- Indeholder; 610-1688 ABDL 4000 Kontrolenhed, 2x 55000-317APO Optisk røgdetektor S-65, 2x 45681-200APO Sokkel til S-65 & 1350-CSA Dørholder Væg 50 kg. m. Anker.



P-ABDL PAKKE DORMA

P-ABDL PAKKE DORMA ABDL Kit

- 2x Orbis detektor med sokkel
- Udtryk m/underlag
- 1 stk Smoke Sabre
- 10xLabel "ABDL"



210-0506

Trempel Sokkel aflastning til loftplader

- 1 styk
- Rød



K-TREMP/BASE 350PC

Trempel Sokkel aflastning til loftplader

- Kasse med 350 styk
- Rød

Flush Contacts



ADIFC-G1C2-W	EU standards
ADIFC-G1C2-QF-M	EU standards
ADIFC-G2C2-MULTI-W	EU standards
ADIFC-G3C2-MULTI-W	EU standards

Surface Contacts



ADISC-G1C2-W	EU standards
ADISC-G2C2IND-W	EU standards
ADISC-G2C2MULTI-W	EU standards
ADISC-G2C2-W	EU standards
ADISC-G3C2MULTI-W	EU standards
ADISC-G2C2-MSW-W	EU standards
ADISC-G2C2-MULTISM	EU standards
ADISC-G3C2-MULTISM	EU standards

R/S Contacts



ADIRSA-G2C3-0.5M	EU standards
ADIRSA-G2C3-MUL	EU standards
ADIRSA-G3C3-M-0.5M	EU standards
ADIRS-G2C3-0.5M	EU standards
ADIRS-G2C3-1.0M	EU standards
ADIRS-G2C3-MULTI-W	EU standards
ADIRS-G3C3-MUL-1M	EU standards

Junction Box



ADIJB-G3C2-10-W	EU standards
ADIJB-G3-10-W	EU standards
ADIJB-G3C2-20-W	EU standards
ADIJB-G3C2-24-W	EU standards



Panic Button

- EU standards
- Silver

ADIPA-G3C2-S Silver
ADIPA-G3C2-W White



ADIKS-3C3-BUZ

Surface Exit Switch with Buzzer

- EU standards
- Lid Anti Tamper
- Anti Tamper Screws & Bit



ADIINT110

Internal Sounder with Strobe and Tamper Protection

- White lens
- Dimensions: 140 x 85 x 32mm

IP65 External Junction Box

- IP65 rating
- Material ABS
- Halogen-Free
- Insulation class II (according to IEC 61140)
- Grey / Ral 7035

WBXJB204	100x100x50mm
WBXJB206	150x110x70mm
WBXJB207	190x140x70mm
WBXJB208	240x190x90mm
WBXJB209	300x220x120mm
WBXJB210	380x300x120mm



BEGRÆNSET LIVSTIDSGARANTI



WBXLDVR1

Lockable DVR Enclosure

- Secure cabinet, suites DVR or NVR
- External 445 x 404 x 120mm
- Internal 400 x 400 x 91mm
- 6.0kg

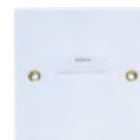


WBXBB1G

FUSED SPUR 1 Gang Surface Pattress Back Box

- Surface mount
- To suite WBXFS13A, 86 x 86 x 25mm

BEGRÆNSET LIVSTIDSGARANTI



WBXFS13A

FUSED SPUR Face Plate 13A

- Non switched fuse spur, flush mount
- 13A Fuse as standard, 86 x 86 x 20mm

3 ÅRS GARANTI

WBXLDVR2

Cabinet Lockable DVR Enclosure

- Secure Cabinet, Suites DVR or NVR
- External 540 x 510 x 124mm
- Internal 510 x 478 x 103mm
- 7.9kg

BEGRÆNSET LIVSTIDSGARANTI

WBXLDVRKEY

- Cabinet 2 Replacement Keys For WBXLDVR 1 & 2



BEGRÆNSET LIVSTIDSGARANTI



Enclosure M20*1.5 access gland 6-12mm

- 3 or 5 Pack
- Cable ø 6-12mm
- Construction: Nylon 66
- Seal Material: NBR
- Rating UL94 V-2

BEGRÆNSET LIVSTIDSGARANTI

WBXGL6-12M20P3 Pack of 3

WBXGL6-12M20P5 Pack of 5

BEGRÆNSET LIVSTIDSGARANTI



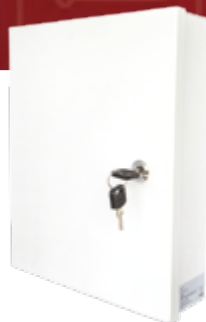
UDVIDET SORTIMENT AF BRANDPRODUKTER

Se side 40-41 for et komplet udvalg af brandsikringsprodukter.



WBXA4DOCR

Fire Accessory A4 Document Box Red



WBXA4DOCW

Enclosure Document A4 Document Box White



WBXDCKEY

Enclosure Document Spare Key A4 Doc Box



Cable Tie 200mm x 4.8mm (Pack of 100)

- UV protected
- 200 x 4.8mm
- Pack of 100

WBXCT200BK **Black**

WBXCT200NT **Neutral**



Cable Tie 300mm x 4.8mm (Pack of 100)

- UV protected
- 300 x 4.8mm
- Pack of 100

WBXCT300BK **Black**

WBXCT300NT **Neutral**



Stainless Steel Cable Ties (Pack of 100)

- AISI 304 Stainless Steel
- Pack of 100

WBXCT200SS **200x4.6mm**

WBXCT400SS **400x4.6mm**

BEGRÆNSET LIVSTIDSGARANTI



WBXSC1.0/25PH

Screwdriver CPLUS
Stubby Phillips Drive



WBXSC2.5/75SLVDE

Screwdriver CPLUS Ins
Slotted Drive



WBXSC4.0/100SLVDE

Screwdriver CPLUS Ins
Slotted Drive



WBXSC6.5/25SL

Screwdriver CPLUS
Stubby Slotted Drive



WBXSCSET7PCVDE

Screwdriver 7 Pc CPLUS
1000v Set Vd



WBX31PCSET

Screwdriver
31 Piece Bit Set



WBXSC3.0/140TESTER

Voltage Tester, 150-250V
Short 3x140mm



WBXCU161VDE

160mm 1000V Diagonal
Cutter (VDE)



WBXADJPL250VDE

250mm 1000V Water
Pump Pliers



WBXLN160VDE

160mm 1000V Long Nose
Pliers (VDE)



WBXPL180VDE

180mm 1000V
Combination Pliers (VDE)



WBXHEX6PC

6 Piece Foldup Hexagon
Key Set

BEGRÆNSET LIVSTIDSGARANTI


WBXHEX7PCL

 7 Piece Ball End Hex L
Key Set Long Arm

WBXKSNAP-KNIFE18

 C-Pro Snap-Off Knife
- 18 mm

WBXSAFETY-KNIFE

 Safety Trimming Knife
(Trapezoid Blade)

J47-R

 Trapezoid Trimming Knife
Blade - 10pc

WBXHACKSAW260

Mini Hacksaw - 260 mm


WBXHACKSAW430

 Hacksaw in-Handle Fixing
System 430 mm

WBXSAW160

 Wallboard Saw
(160 mm Cutting Mouth)

J36-R

 Mini Hacksaw Blades,
for J36-150) 10 PC

J35-18B

 Hacksaw Blades HSS
Bi-Metal-18TPI 10 PC

WBXTAPE5M

 Tape Measure,
Inch/Metric 5M-16ft

1 ÅR GARANTI


WBXAC-DETECTOR

 Non-Cont AC Voltage
Detector max. 1000V

1 ÅR GARANTI


WBXBNCRIMP

RG59 Crimp Tool



WBXFUSEKIT

**Intruder Fuse Kit -
18 Fuses X 5**



WBXRESKIT

**Intruder Resistor Kit
9 Resistors X 30**



WBXRJ45CRIMP

RJ45 Crimp Tool

- RJ45/RJ12/RJ11
- With cable cutter & stripper



WBXVHLR1224

Multi Purpose Relay 8A 12/24V

- Board Only
- 12 / 24V operation
- Multi purpose



WBXTAPEW

Tape PVC 19mm x 20m

- Insulation tape
- 1pc
- White



ADI-8A-GEL-OR

IP Rated Crimp Connector

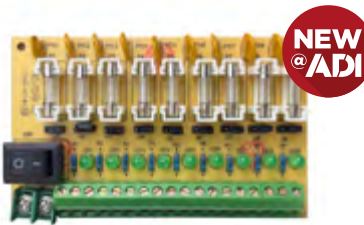
- IP Rated+
- Orange
- 19-26AWG
- 100 Pack



ADI-FDB-4

4 Way Fused Distribution Board

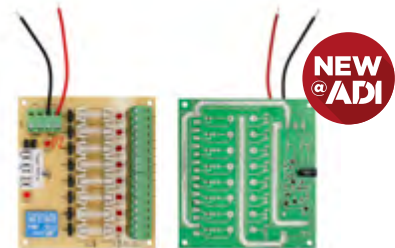
- 12/24V operation
- PTC fuse or glass fuses option



ADI-FDB-9

9 Way Fused Distribution Board

- 12/24V operation
- PTC fuse or glass fuses option



ADI-FDB-8-FR

8 Way Fused Distribution Board

- 12/24V operation
- With fire input relay

BEGRÆNSET LIVSTIDSGARANTI


WBXHDBP1
**HD Video Balun, Dual Pack 1 X PIG
1 X STD No Surge 5 MP**

- 720/960P/1080P,3MP/4MP/5MP
- HD-CVI/AHD/TVI/CVBS
- Pack: pair


WBXHDBPV1
HD Video Balun

- UTP
- Power & video
- Up to 200m
- 12V Dc


WBXHDPOCB1
HD Video Balun with Power over Coax

- Power over coax
- TVI, CVI, AHD & CVBS
- 4k resolution


WBXGLIHD
HD Ground Loop Isolator

- Compatible with all HD-TVI, HD-CVI, AHD & CVBS analog cameras
- BNC male to BNC female with mini 20cm RG 59 coaxial pigtail lead on both sides.
- Passive, no power supply required
- Prevents video-signal distortion caused by video ground loops

3 ÅRS GARANTI


WBXLDVR1
Lockable DVR Enclosure

- Secure cabinet
- Suites DVR or NVR
- External 445 x 404 x 120mm
- Internal 400 x 400 x 91mm
- 6.0kg


WBXLDVR2
Lockable DVR Enclosure

- Secure cabinet
- Suites DVR or NVR
- External 540 x 510 x 124mm
- Internal 510 x 478 x 103mm
- 7.9g


WBXLDVRKEY

- Spare key
- Pack of 2

ADIs WEBSHOP

Køb markedsledende sikkerhed,
brand- og Pro AV-produkter **24/7**



Du har nu et ADI-kundenummer, men måske endnu ikke login til webshoppen?

Registrer dig for online adgang



I vores eshop kan du bestille 24 timer i døgnet, 7 dage om ugen. Gennemse vores vares produkter og mærker og se den aktuelle lagerbeholdning. Du kan også placere en genbestilling baseret på tidligere køb eller nemt konvertere ordrer til tilbud.

Fordele ved din online-konto



Forskellige adgangsniveauer



Shop, når det passer dig



Se dine priser



Anmod om et tilbud



Genbestil tidligere levering



Gem produktlister til senere indkøb

E-shop-kontoen er personlig, men knyttet til virksomhedens kundenummer. Enten ansøger hver medarbejder om sin egen konto, eller du udpeger nogen til at administrere dine medarbejders konti. Der er også forskellige niveauer af konti, tal med din salgsrepræsentant hos ADI.

**Ring**

Tel 43 24 56 00

**Klik**www.adiglobal.dk
salg.dk@adiglobal.com**Afhentning**

Baldershøj 13-15, Ishøj

