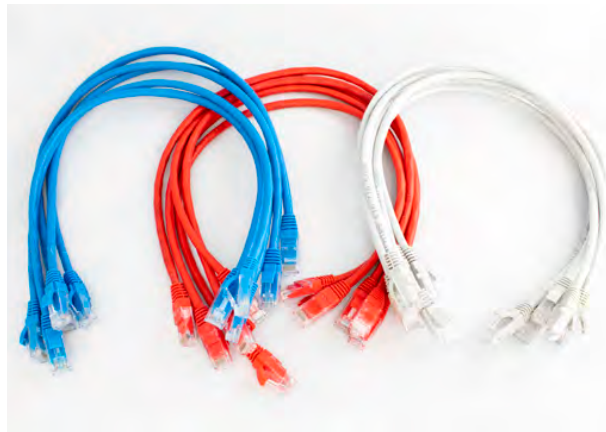


# CAT6E PATCH LEADS

**ADI  
PRO**

Available in 0.5m, 1m and 2m (packs of 5)  
Available in 3m, 5m, 10m and 15m individually  
Available in all sizes in GREY, RED, BLUE  
Available in sizes 0.5-5m in GREEN



## Features

8p8c - The 8 position 8 contact connector is a modular connector commonly used to terminate twisted pair and multi-conductor Cat6e cable.

28 AWG

Moulded, snagless boot

Gold plated connectors

PVC cable jacket

EIA/TIA -568B wiring colour code

550 Mhz

Warranty : Limited Lifetime

For more information contact  
your ADI sales person or visit  
us at [www.adiglobal.com](http://www.adiglobal.com)



## Additional Specifications

Length	0.5m (5pk)	1m (5pk)	2m (5pk)
Weight kg	0.05	0.14	0.22
Grey	WBXC6EGY0.5MP5	WBXC6EGY1MP5	WBXC6EGY2MP5
Red	WBXC6ERD0.5MP5	WBXC6ERD1MP5	WBXC6ERD2MP5
Blue	WBXC6EBL0.5MP5	WBXC6EBL1MP5	WBXC6EBL2MP5
Green	WBXC6EGN0.5P5	WBXC6EGN1P5	WBXC6EGN2P5
Length	3m(1pk)	5m (1pk)	10m(1pk)
Weight kg	0.065	0.11	0.22
Grey	WBXC6EGY3MP1	WBXC6EGY5MP1	WBXC6EGY10MP1
Red	WBXC6ERD3MP1	WBXC6ERD5MP1	WBXC6ERD10MP1
Blue	WBXC6EBL3MP1	WBXC6EBL5MP1	WBXC6EBL10MP1
Green	WBXC6EGN3P1	WBXC6EGN5P1	NOT AVAILABLE
Length	15m (1pk)		
Weight kg	0.33		
Grey	WBXC6EGY15MP1		
Red	WBXC6ERD15MP1		
Blue	WBXC6EBL15MP1		
Green	NOT AVAILABLE		

For more information contact  
your ADI sales person or visit  
us at [www.adiglobal.com](http://www.adiglobal.com)