



Galaxy® Dimension

Integrated intrusion and door control panel range

The Galaxy® Dimension series of security systems is a fully integrated intrusion and door control security solution for mid to large commercial security installations. It offers your customers a user-friendly system in a cost-effective and fully compliant Security Grade 3 package. With innovative wireless capability and user-friendly remote management options, the series provides high quality, reliable security solutions, with the flexibility to meet the needs of every commercial and industrial application.

Flexible & reliable communications

To ensure fail-safe communications, multiple path communication options for alarm signalling include GPRS, Ethernet and standard telephone line (PSTN). These options also allow maximum flexibility and customisation to capitalise on existing network infrastructures and minimise disruption for customers.

Attractive user interfaces and Mobile App

A choice of LCD Keypad and Keyprox options including the MK8, with a modern design and all the familiarity and functionality of the MK7, for ease of programming across the range. In addition, all user interfaces feature a proximity function allowing quick and secure set and unset without PIN code. The GX Remote control mobile App allows control of the system from anywhere in the world from your preferred smart device (requires E080-04 Ethernet module).

Audio verification ('Listen-in' Facility)

With Galaxy® Dimension, an Alarm Receiving Centre (ARC) can listen in using independent audio channels to identify the specific location where the alarm has been triggered and verify source and cause. This reduces false alarms and increases system reliability.

Programming software compatibility

The Remote Servicing Suite (RSS) is a maintenance tool enabling complete remote control of the panel, allowing installers to give customers instant support. Installers can complete remote routine inspection reducing the need for time consuming and costly site visits. The RSS software uses a common database to communicate with all Galaxy® panels from one programme. A networked version of the Remote Servicing Suite offers access to up-to-date records for all users. This guarantees the secure management of information in one central location. Both wired and wireless components can take advantage of the easy remote diagnostics and maintenance functionality in this software.

Secure wireless options

Cabling can be impractical due to building aesthetics, or simply too expensive. By removing cabling, particularly from large installations, significant time can be gained, costs saved and disruption to customer's operations can be minimised.

Galaxy Dimension is a hybrid control panel series that offers wired, wireless or a combination of both solutions and uses patented control panel software and bi-directional radio and agile routing technologies to provide secure and reliable security for commercial environments.

A combination of up to eight RF portals per installation, a wide range of intruder, perimeter, environmental and life safety wireless sensors which boast a 2km radio range (in open field) ensures the strongest signal path is used to keep control panel and sensors in constant communication and provides a flexible and customisable system to meet business needs.

NEW

Remotely manage sites and save time and money

The introduction of WIN-PAK for Galaxy end user software brings a new level of ease to managing up to five Galaxy systems simultaneously across multiple sites, from one central location. Designed to ease user management, the software manages user names, PINs, authority rights across sites, it automatically updates one or more Galaxy panels and allows users to be added and deleted in just a few mouse clicks. Improved command and control is achieved through specific Galaxy floor plans that clearly display alarms and other information which along with reporting and automation features provides users with a highly secure, powerful management tool that can be expanded to meet your security needs.

NEW

Fully managed and monitored integrated solutions

When the time is right, with WIN-PAK, the system can be expanded to include fully featured access control (NetAXS) and further expanded to a full management and monitoring system that includes multiple intruder systems, access control and CCTV surveillance all controlled by WIN-PAK.

The right choice

Galaxy Dimension offers customers a user-friendly, integrated security solution that is flexible and upgradeable to meet specific security needs. Honeywell provides sales and marketing support and organises frequent training to boost system understanding and to ensure trouble-free installations every time.

For more information on Galaxy® Dimension please go to www.honeywell.com/security/uk or contact our sales team using the details provided overleaf.

Features

- Up to 520 zones
- Up to 64 doors controlled
- Protecting up to 32 groups
- Up to 1000 users
- Up to 67 weekly schedules available
- Up to 32 yearly holiday schedules
- Door access controlled by access templates and group set status
- Areas behind a door can be unset automatically via card reader
- Users can be managed automatically and remotely in up to 5 Galaxy panels with WIN-PAK for Galaxy
- Events can be identified instantly using realistic floorplans with WIN-PAK for Galaxy.
- Access event log with 1000 events recorded in panel (separate intruder log)
- GPRS, Ethernet, PSTN, USB communications options
- Groups can be set via door control readers
- Evacuation control will allow doors to unlock in the event of fire
- Up to 32 audio verification channels
- Multi-language interface
- GX remote control Mobile App for remote management of up to 20 sites from a single smart device.
- The Galaxy Dimension range has been independently tested and is compliant to EN50131-3:2009, EN50131-6:2008, PD6662:2010
- Compatible with all wiegand readers
- Up to 8 wireless interface modules (RF portals)
- Up to 192 wireless zones
- Up to 100 key fobs
- Full bi-directional agile routing (patented technology)
- Full range of wired and wireless intrusion and environmental detectors

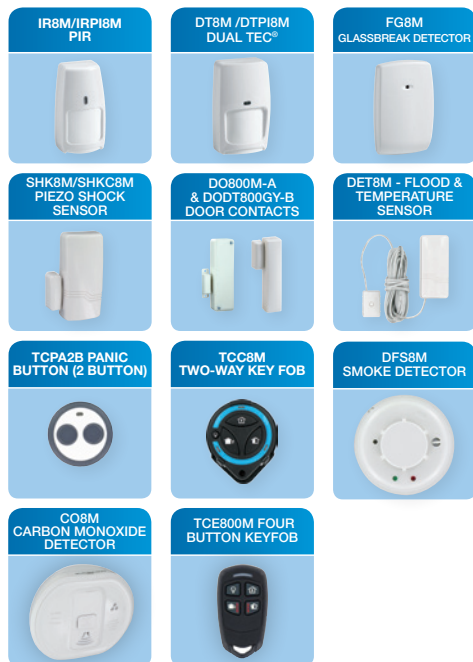
Attractive user interfaces

A range of LCD Keypad and Keyprox options

- MK8 keypad offers a modern keypad and keyprox design with all the familiarity and functionality of the MK7 keypad
- Familiar MK7 keypad for installer programming across the range
- Proximity function across all user interfaces allows quick and secure set and unset without PIN code
- Check and control the system from anywhere in the world with the mobile app **GX Remote Control** from your preferred smart device (requires E080-04 Ethernet module)

Wireless system expander module - RF Portal

- Bi-directional wireless interface with full range of intrusion and environmental detectors
- 868MHz frequency
- Up to 8 wireless interface modules (RF portals)
- Up to 192 wireless zones and up to 100 key fobs
- Full bi-directional agile routing (patented technology)
- Compatible with all Honeywell Alpha protocol sensors



Power Units

Galaxy® Power Unit 2.75A

- Rated at 1.2A for Grade 3 compliance
- Reports AC, Battery, fuse and tamper via RS485

Galaxy® Power RIO 2.75A

- Rated at 1.2A for Grade 3 compliance
- Reports AC, Battery, fuse and tamper via RS485
- Integrated RIO (8 inputs/4 outputs)

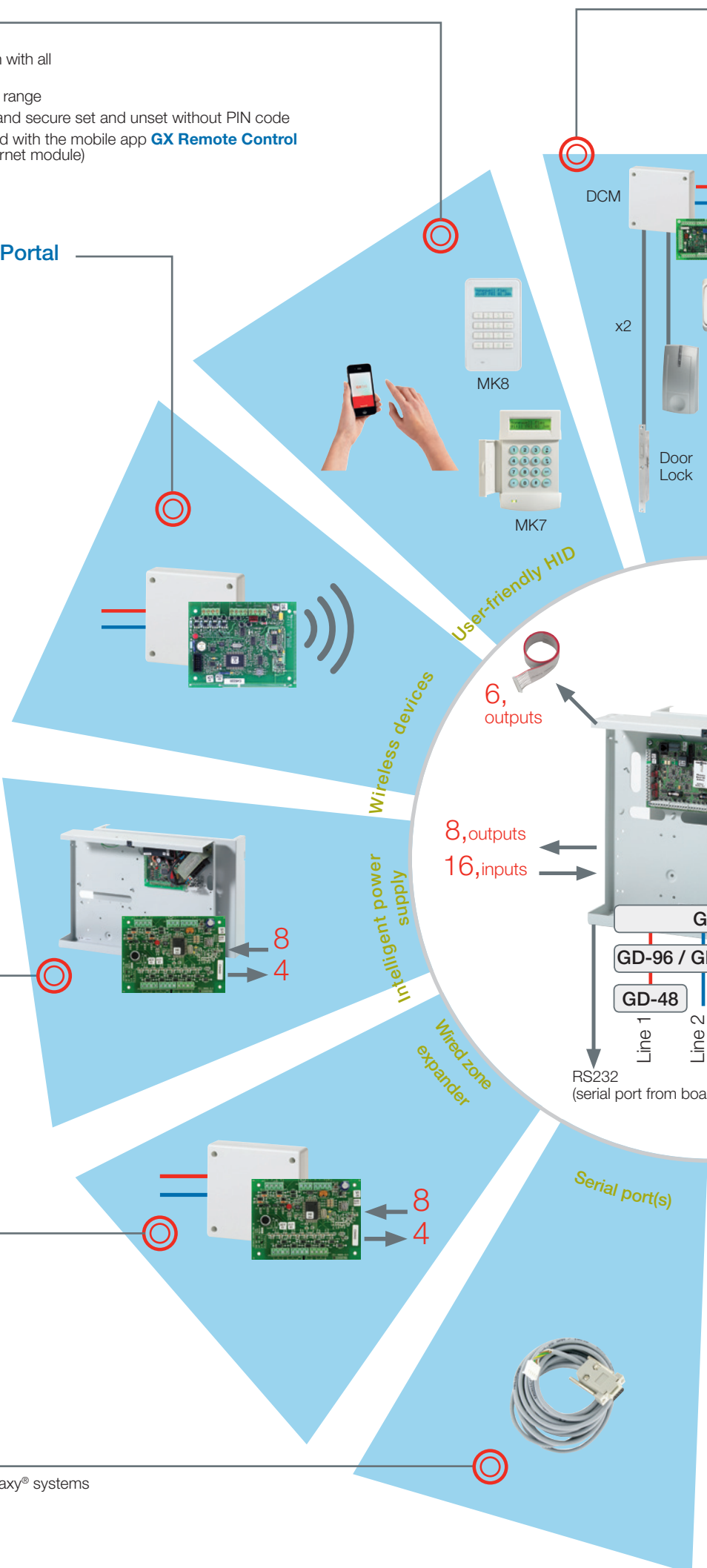
Galaxy® RIO (Remote Input/Output)

Provides zone and output expansion for Galaxy® Systems

- 8 fully programmable zones
- 4 programmable outputs
- Tamper protection
- Rotary switch for setting module address

RS232 Cable

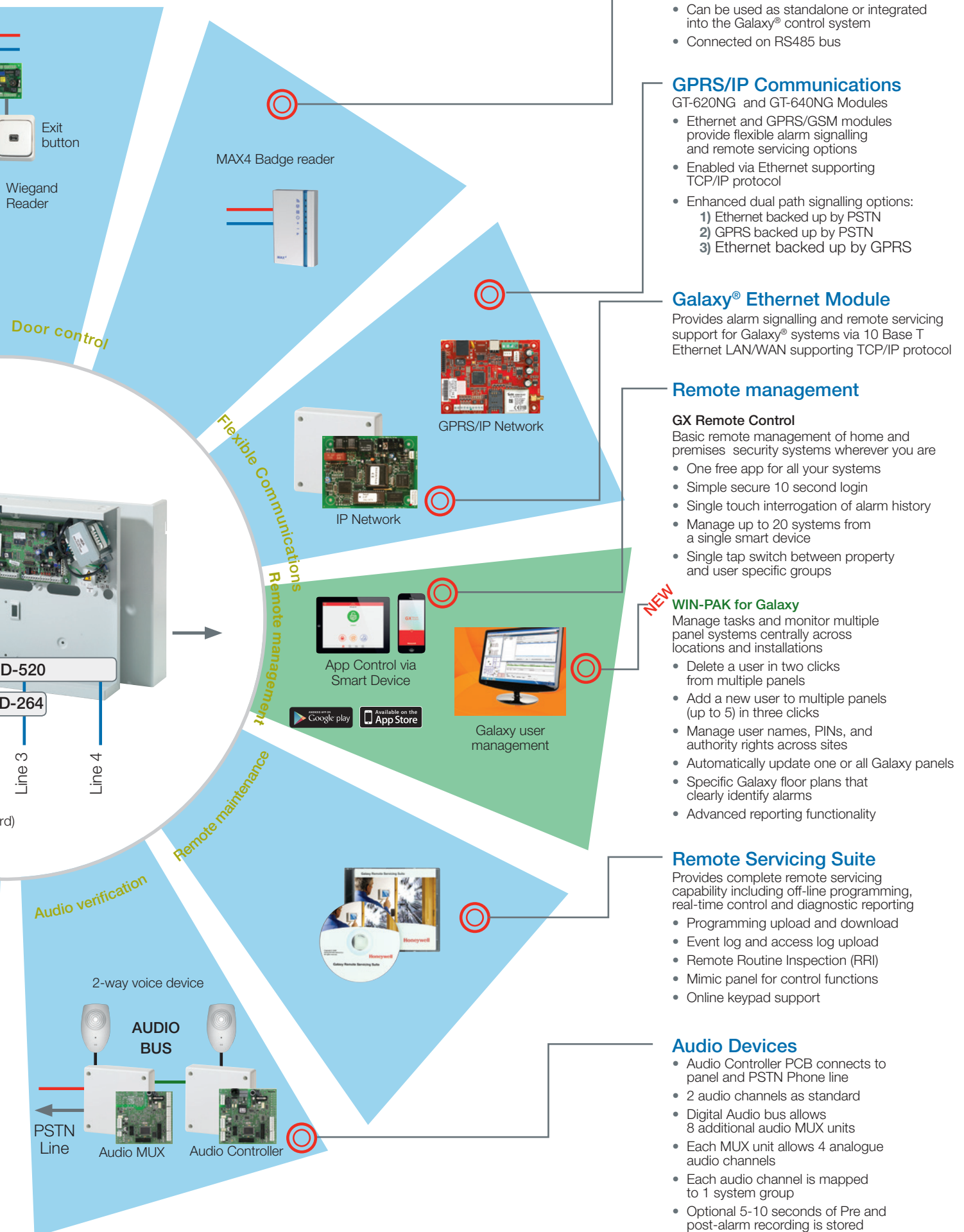
Enables communications between PCs or Printers and Galaxy® systems



DCM

- Door control module with two wiegand inputs allows management of two doors
- Off line mode available for previous 100 valid users
- Users can be assigned to an Access Template giving an access time zone to each group (64 Access Templates available on GD-520)

- On line 1 only
- On lines 1, 2, 3 or 4



Galaxy® Dimension

Integrated intrusion and door control panel range

Technical Specifications

Description	GD-48	GD-96	GD-264	GD-520
Zones onboard (maximum) Inclusive wireless zones	16 - (48) 32	16 - (96) 80	16 - (264) 192	16 - (520) 192
Outputs (400mA) on-board	8	8	8	8
Trigger outputs on flying lead (10mA)	6	6	6	6
Integrated PSU	2,5 A	2,5 A	2,5 A	2,5 A
Output Current rating	1.2A	1.2A	1.2A	1.2A
RS485 Databases	1	2	2	4
Keypads (Keyprox)	8 (3)	16 (7)	16 (7)	32 (24)
Bus mounted prox readers (MAX)	4	16	16	32
DCMs with 2 x Wiegand interfaces	4	16	16	32
DCM controlled doors	8	32	32	64
Wireless Portals	4	8	8	8
Users	100	250	1000	1000
7 Day Timer Schedules	19	35	67	67
Zone types	52	52	52	52
O/P types	81	81	81	81
Library	Yes	Yes	Yes	Yes
Event Log	1000	1500	1500	1500
Access Log	500	1000	1000	1000
Multi-users	Yes	Yes	Yes	Yes
Autoset	Yes	Yes	Yes	Yes
Pre-Check	Yes	Yes	Yes	Yes
Timed Lockout	Yes	Yes	Yes	Yes
Links	64	128	256	256
Part Set	Yes	Yes	Yes	Yes
Silent Part Set	Yes	Yes	Yes	Yes
RS232	Built-in	Built-in	Built-in	Built-in
Integrated PSTN (V 22)	Built-in	Built-in	Built-in	Built-in
Printer Output	Via RS232	Via RS232	Via RS232	Via RS232
Remote Servicing	Yes	Yes	Yes	Yes
Ethernet module	Optional	Optional	Optional	Optional
GSM/GPRS module	Optional	Optional	Optional	Optional
Groups	8	16	32	32
Audio Verification channels	8	32	32	32
SMS text	Yes	Yes	Yes	Yes
ISDN	Optional	Optional	Optional	Optional
Mobile App*	Yes	Yes	Yes	Yes
EN50131	Compliant to EN50131-3:2009, EN50131-6:2008, PD6662:2010 and certified by a third party testing agency			

* Requires E080-04 Ethernet module

Order References

Control Panels

C048-D¹-XX²	Galaxy® Dimension GD-48 control panel with PSTN Dialler
C096-D¹-XX²	Galaxy® Dimension GD-96 control panel with PSTN Dialler
C264-D¹-XX²	Galaxy® Dimension GD-264 control panel with PSTN Dialler
C520-D¹-XX²	Galaxy® Dimension GD-520 control panel with PSTN Dialler

Notes:

1 Control panel part numbers containing new "-D-" reference indicates compliance to EN50131-3: 2009 and PD6662:2004/2010 tested and certified by a third party testing agency.
2 Market variant: XX = E1 for English, Spanish, Italian, Portuguese, E2 for Benelux Region, E5 for French

User Interfaces

CP037-01	MK7 Keypad
CP038-01	MK7 Keyprox
CP050-00-01	MK8 Keypad
CP051-00-01	MK8 Keyprox

Modules

E080-04	Ethernet module
C079-2	RF portal in plastic housing
GT-620NG	IP Communications Module
GT-640NG	GPRS/IP Communications Module
C072	Galaxy RIO - 8 inputs/4 outputs

Door Control

C080	DCM - Door controller
C081	DCM - Door controller with PSU
C086	USB card reader interface
MX04	MAX4 proximity reader
YX0-0004	MAX keytag
YX0-0020	ASK proximity keytag (grey)

Remote User Management

WPG4X1	WIN-PAK for Galaxy, Single user 1 Galaxy Panel support
WPG4X5	WIN-PAK for Galaxy, Single user 5 Galaxy Panel support

For further information on WIN-PAK please refer to WIN-PAK for Galaxy Datasheet

Audio

C084	Audio interface module
C085	Audio MUX module
TP 800**	2 Way voice speaker-mic

**When used with the Audio interface order code C084

Remote Servicing

A227	Galaxy® SPI key (Blank)
C087	SPI key programmer
R056-CD-L	Standalone Remote Servicing Suite (RSS)
R057-CD-DG	Remote Servicing Suite with USB dongle & client/server version
R058-CD-DG	User Management Suite (UMS)

Mobile App downloads

Via Google play Android
<https://play.google.com/store>



Via iTunes Apple
<https://itunes.apple.com>

Accessories

A079	Dual Battery Monitor
A161	Printer interface
A229	Outputs trigger lead
A234	Galaxy® RS232 cable
A303-S	Mounting bracket for GT-20/40 and E080-4 modules

Power Supply Units

P026-01-B	Galaxy power RIO
P025-01-B	Galaxy power unit

Honeywell reserves the right to alter the specification of products without notice.



All other company names and products are trade names, trademarks or registered trademarks of their respective companies.
Honeywell is a registered trademark of Honeywell International, Inc.

Find out more:

www.honeywell.com/security/uk
Fax: +44 (0) 1698 738300
Email: securitysales@Honeywell.com

Honeywell Security and Fire

Newhouse Industrial Estate
Motherwell
Lanarkshire
ML1 5SB
UK
Tel: +44 (0) 844 8000 235
www.honeywell.com



HSFI-Dimension-14-EN(1015)DS-E
October 2015
© 2015 Honeywell International Inc.

Honeywell