

MAXPRO® VMS

VIDEO MANAGEMENT SYSTEM

Honeywell's MAXPRO® VMS (Video Management System) controls multiple sources of video subsystems in a facility to collect, manage and present video in a clear and concise manner. MAXPRO® VMS intelligently determines the capabilities of each subsystem across various sites, allowing video management of any analogue or digital video device through a unified configuration and viewer. The subsystems can be analogue matrix switches or digital/network video recorders allowing any analogue or digital input to be viewed on analogue or digital monitors. Users can benefit from using traditional analogue systems and IP-network systems at the same time to ensure maximum use of their initial investments. The subsystems can range from Honeywell and 3rd party matrix switchers and Honeywell and 3rd party DVR/NVR's.

Control of the MAXPRO VMS can be with a traditional joystick controller, keyboard mouse or even through a 3rd party interface. MAXPRO VMS has an extremely powerful rules engine allowing customisation of the system to respond and control in the best possible manner for the application. MAXPRO VMS is highly scalable so users can easily expand their video surveillance network as required. Using an open architecture framework, MAXPRO VMS is able to integrate with existing video infrastructures and a multitude of third-party recorders and devices available now and in the future. Additionally, MAXPRO® VMS includes integration with Honeywell's Pro-Watch® security management system, Active Alert® and People Counter video analytics, and other Honeywell products and solutions. The feature-rich user interface of MAXPRO® VMS truly offers a unified management platform across many disparate systems to further embody Honeywell's concept of 'Learn One, Know them All.'

Market Opportunities

MAXPRO® VMS is ideal for facilities requiring at-risk critical infrastructure protection such as airports, seaports, large multi-site commercial buildings, casinos, and other high-profile facilities. It is the perfect client-server video management solution for locations requiring the use of both digital and analogue technologies.

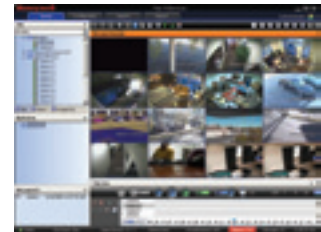
Features

- Feature-rich and user-friendly interface to view video from numerous different recorders from a single point
- Role-based operator privileges
- Redundant server configuration increases system reliability
- Operators can log on using their local language and the built-in messaging system allows operators to share video scenes via instant messages
- Auto-discovery of cameras connected to MAXPRO NVR, Rapid Eye™, Fusion, IP Engine and Enterprise recorders
- User-defined macros to execute common operations
- An extremely powerful macro programming language is available to fully customise actions based on events
- Surrounding cameras mode with presets, makes following subjects of interest simple and efficient
- Incident management mode allows creating a single clip with multiple cameras at different times that can be played back sequentially or simultaneously through a salvo layout
- Remote monitor mode allows sharing and controlling a remote monitor while still viewing locally
- Control any monitor, whether analogue or digital, from a single workstation or joystick keyboard. Allows the system to be used as a true analogue and digital matrix.
- Ability to investigate events and alarms by simultaneously viewing alarm video at various stages. For every alarm, users can view the video captured during pre-alarm, on-alarm, post-alarm, and also view live video from the camera which triggered the alarm
- Enriched video viewing experience through the intuitive video rendering engine that optimises CPU utilisation by altering the video frame rate
- Search and find video through event view or timeline. Preview search allows viewing a snapshot at various times to quickly narrow the scene of interest.
- Commentable bookmarks allow for easily returning to scenes of interest
- VMS in VMS feature allows parent/child topology of numerous MAXPRO VMS systems, discover, view video and receive events from other MAXPRO VMS systems



MAXPRO® VMS Client

Viewer 2x2



MAXPRO® VMS Client

Viewer 4x4

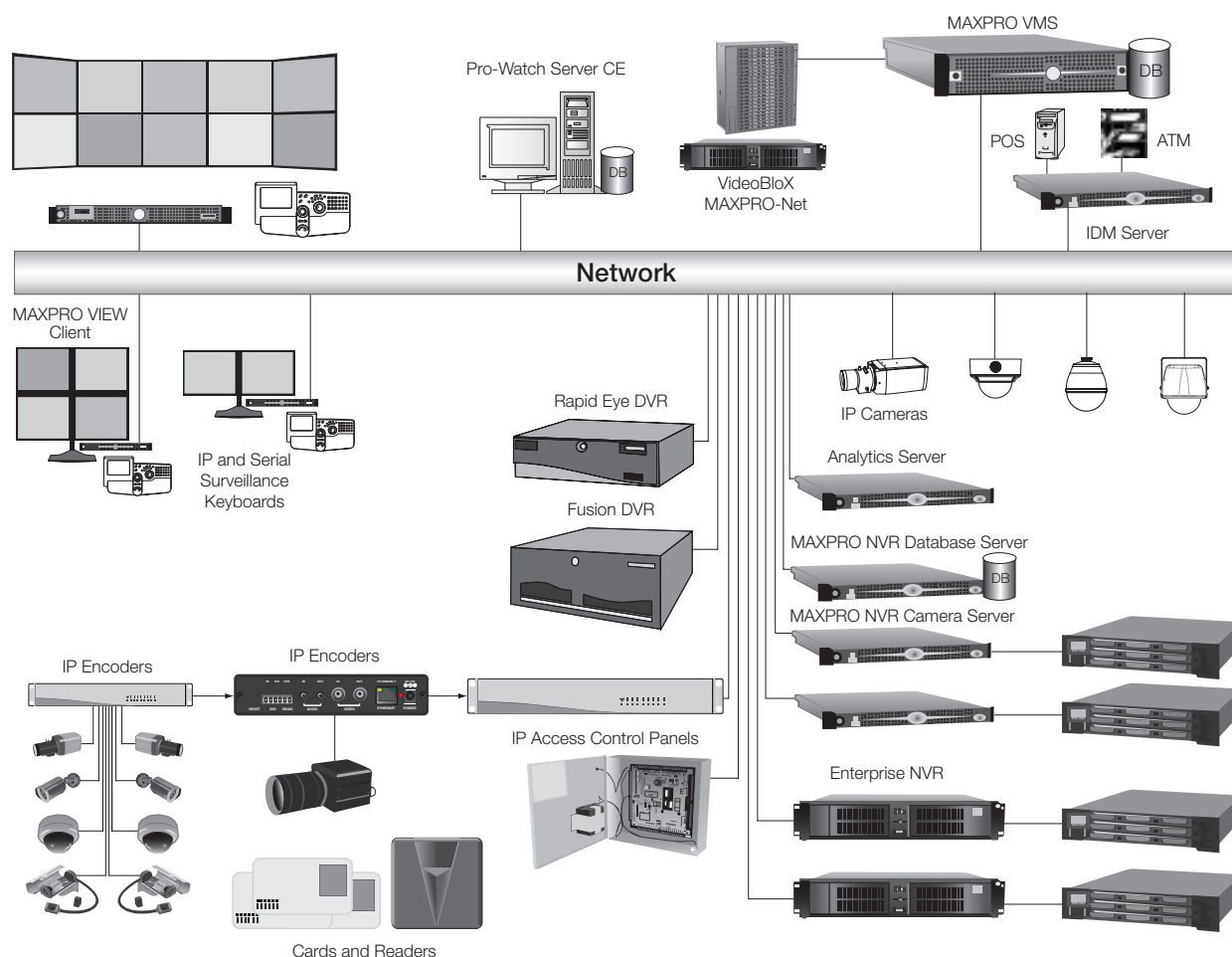
MAXPRO® VMS

ARCHITECTURE

MAXPRO® VMS is based on client-server architecture for maximum flexibility, customisation and integration. It offers one-click migration support from analogue matrix systems. The MAXPRO® VMS client enables the monitoring of sites and the configuration of video devices such as cameras, monitors, keyboards, etc. The MAXPRO® VMS server consists of the MAXPRO® VMS framework controller and database, and other core components.

The following diagram illustrates the MAXPRO® VMS architecture and associated components:

MAXPRO® VMS System Diagram



MAXPRO® VMS

RECOMMENDED HARDWARE SPECIFICATIONS

Specification for the MAXPRO® VMS Standard Server	
Processor	Dual Core Intel Xeon® 3.0 GHz
Memory	Minimum 4 GB of RAM
Hard Disk	Two separate hard drives or two sets of RAID arrays 10K RPM SATA 150 GB or 10K-15K RPM SAS 146 GB
Secondary Storage	DVD-R drive and a 3.5" 1.44 MB floppy disk drive
NIC	1 Gigabit network interface card or compatible pair
Keyboard / Mouse	12 function-key keyboard and mouse
Graphics Adapter	Display adapter that supports 32-bit colour or higher
Operating System Options	Windows Server 2003 R2 (32-bit only) or Windows Server 2008 R2
Database	Microsoft SQL Express 2008 is automatically installed while installing MAXPRO VMS Server
Virtual Environment (server only)	VM Ware ESX Ver 4 & V Sphere 4 compliant
Monitor Resolution	1280x1024 pixels; 65K colours non-interlaced

Specification for the MAXPRO® VMS Performance Server	
Processor	Quad Core Intel® Xeon® 3.0 GHz
Memory	Minimum 4 GB of RAM
Hard Disk	Two separate hard drives or two sets of RAID arrays 10K RPM SATA 150 GB or 10K-15K RPM SAS 146 GB
Secondary Storage	DVD-R drive and a 3.5" 1.44 MB floppy disk drive
NIC	1 Gigabit network interface card or compatible pair
Keyboard / Mouse	12 function-key keyboard and mouse
Graphics Adapter	Display adapter that supports 32-bit colour or higher
Operating System Options	Windows Server 2003 R2 (32-bit only) or Windows Server 2008 R2
Database	Microsoft SQL Express 2008 is automatically installed while installing MAXPRO VMS Server
Virtual Environment (server only)	VM Ware ESX Ver 4 & V Sphere 4 compliant
Monitor Resolution	1280x1024 pixels; 65K colours non-interlaced

Specification for the MAXPRO® VMS Standard Client	
Processor	Intel™ Core®2 Duo 3.00GHz Dual Core 3.00GHz/1333MHz/4MB L2
Memory	Minimum 4 GB of RAM
Hard Disk	Single separate hard drive or one RAID array utilising 10K RPM SATA 150 GB or 10K-15K RPM SAS 146 GB
Secondary Storage	DVD-RW drive and a 3.5" 1.44 MB floppy disk drive
NIC	1 Gigabit network interface card
Keyboard / Mouse	12 function-key keyboard and mouse
Graphics Adapter	Display adapter - Direct X 9 compatible 128 MB per monitor or greater
Operating System Options	Microsoft® Windows XP Professional SP2 (32-bit only) or Windows 7 Pro (32-bit and 64-bit)
Database	Microsoft SQL Express 2008 is automatically installed while installing MAXPRO VMS Server
Monitor Resolution	1280x1024 pixels; 65K colours non-interlaced

Specification for the MAXPRO® VMS Performance Client	
Processor	Intel™ Core®2 Extreme 3.00GHz Quad Core 3.00GHz/1333MHz/12MB
Memory	Minimum 4 GB of RAM
Hard Disk	Single separate hard drive or one RAID array utilising 10K RPM SATA 150 GB or 10K-15K RPM SAS 146 GB
Secondary Storage	DVD-RW drive and a 3.5" 1.44 MB floppy disk drive
NIC	1 Gigabit network interface card
Keyboard / Mouse	12 function-key keyboard and mouse
Graphics Adapter	Display adapter - Direct X 9 compatible 128 MB per monitor or greater
Operating System Options	Microsoft® Windows XP Professional SP2 (32-bit only) or Windows 7 Pro (32-bit and 64-bit)
Database	Microsoft SQL Express 2008 is automatically installed while installing MAXPRO VMS Server
Monitor Resolution	1280x1024 pixels; 65K colours non-interlaced

MAXPRO® VMS

ORDERING INFORMATION

MAXPRO® VMS - Part Numbers and Licencing			
MAXPRO® VMS - Base Software and Licences			
HNMSWVMS	MAXPRO VMS Base Software includes: MAXPRO® VMS, SQL 2008 Express, Includes Licences for One (1) MAXPRO® VIEW Client, with 64 Channels interface to Rapid Eye DVR, MAXPRO NVR Series, Fusion DVR, IP Engine, Enterprise NVR, MAXPRO and VideoBloX Matrix Switch.		
HNMSWRED	MVMS Redundant System		
MAXPRO® Client Licence - one licence per connected workstation (Client application can run multiple instances)			
HNMSWCL	MAXPRO View - Single Client Licence		
MAXPRO® VMS Base Channel Licence - one licence per video input			
HNM64	Additional 64 Base Channels	HNM384	Additional 384 Base Channels
HNM128	Additional 128 Base Channels	HNM448	Additional 448 Base Channels
HNM192	Additional 192 Base Channels	HNM512	Additional 512 Base Channels
HNM256	Additional 256 Base Channels		
MAXPRO® VMS Adapters			
NMPELDX64	Pelco DX8100 adapter - 1 per system (Rev 1.1.00.2508)		
HNMPELDS64	Pelco Digital Sentry DS1000 adapter - 1 per system (Rev 7.0.24.0)		
HNMMILE64	Milestone Xprotect Enterprise adapter - 1 per system (Rev 7.0d)		
HNMMAT512	3rd party matrix adapter - 1 per system (Bosch, AD, Pelco, Vicon)		
HNMPLEND	Pelco Endura adapter - 1 per system (Call for availability)		
HNMLG	LG DVR adapter - 1 per system (Call for availability)		
HNMEXAQ	EXAQ NVR adapter - 1 per system (Call for availability)		
HNMPANWJ	Panasonic WJ DVR adapter - 1 per system (Call for availability)		
HNMGBRUK	Geutebruck GeviScope adapter – 1 per system (Call for availability)		
MAXPRO® VMS with Active Alert Video® Analytics			
HNMHVAB	HVA - Base Package	HNMHVASI	HVA - Smart Impressions
HNMHVAS	HVA - Standard Package	HNMHVAPC	HVA - People Counting
HNMHVAP	HVA - Premium Package		
MAXPRO® VMS Lite - Part Numbers and Licencing			
MAXPRO® VMS Lite - Base Software and Licences			
HNMSWVMSLT	MAXPRO® VMS Lite Software includes: MAXPRO® VMS Lite, SQL 2008 Express, Includes Licences for One (1) MAXPRO VIEW Client, with 64 Channel interface to Rapid Eye DVR MAXPRO NVR Series, Fusion DVR, IP Engine, Enterprise NVR, MAXPRO-Net and VideoBloX Matrix Switch. Expandable up to a maximum of 3 Clients and 128 Channels. No third party adapter support.		
MAXPRO® Client Licence - one licence per connected workstation (Client application can run multiple instances)			
HNMSWCL	MAXPRO View - Single Client Licence		
MAXPRO® VMS Lite Base Channel Licence - one licence per video input			
HNM64	Additional 64 Base Channels		
MAXPRO® VMS Lite Upgrade			
HNMUG	Upgrade MAXPRO® VMS Lite to MAXPRO® VMS		

NOTE: Honeywell reserves the right, without notification, to make changes in product design or specifications.

For additional information:

please visit www.honeywell.com/security/me

Honeywell Security Group

LOB Building 08, Office 199
P.O.Box 18530, Jebel Ali
Dubai
United Arab Emirates (UAE)
Tel: +971-4-8073200
www.honeywell.com

HVS-MPVMS-05-ME(0612)DS-C
June 2012
© 2012 Honeywell International Inc.

