

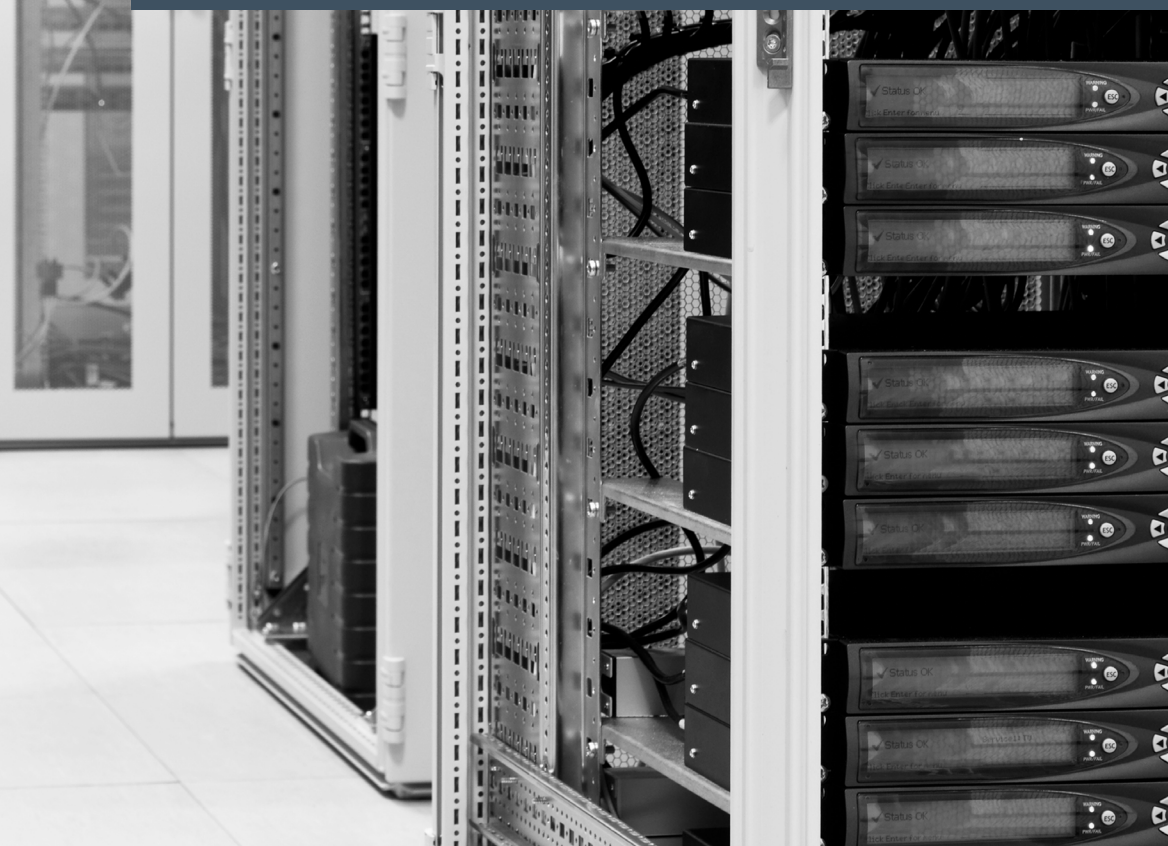


Connectix
Cabling Systems™

Racky Rax

Cabinets and Accessories

T: 01376 346600 F: 01376 346620
www.connectixcabling.com



Racky Rax Cabling Systems™

Racky Rax



Racky Rax racks, cabinets and enclosure systems are produced and distributed under our umbrella brand Racky Rax. Our Racky Rax products are British designed and manufactured to BS 5850/3192 and IEC 297-2 in the UK, at our warehouse which is located in Braintree, Essex alongside our head offices.

Racky Rax cabinets and accessories are used across multiple business sectors within LANs and data centres. The portfolio includes server, co Location and advanced patching frames, IP rated riser enclosures, external cabinets and niche residential solutions manufactured to each individual project specification.

What we offer within Cabinets

- Floor Standing Network Cabinets
- Floor Standing Server Cabinets
- Advanced Patching Frames
- Wall Mount Enclosures and Accessories
- Cable Pathway and Ladder Management Systems
- IP rated Enclosures
- Power Distribution Units
 - Standard, Modular and Intelligent



T: 01376 346600 **F:** 01376 346620

E: sales@Racky Rax.co.uk

www.Racky Raxcablingsystem.com

Cabinets and Accessories

Index

1.1	Mini Cabinets
1.2	Home Cabinets
1.3	Server Cabinets
1.4	Floor Standing Cabinets
1.5	Wall Mounting Cabinets
1.6	High Density Patching Frame
1.7	Wall Mounting Frames
1.8	Fan Trays
1.9	Accessories
1.10	Power Distribution Units
1.11	Bespoke Cabinets & Accessories

Cabinets and Accessories

Mini Cabinets

The compact design of the Mini Cabinet makes it the ideal housing for small network requirements, allowing integration of voice, data, ISDN and internet connections in one neat unit. The cabinet has been designed to fit perfectly into both the office and home environment, and has an 8u capacity for the Office System range of 10" networking hardware and patching equipment. The cabinet has a smart black finish.

The lockable smoked glass door enables easy patching from the front of the unit, and cable access points are situated in the top and back to assist installation. For maximum cable access the rear panel can be removed. There are added ventilation slots in both sides with a removable top plate to increase ventilation. An extensive range of cabinet accessories are available, including; shelves, blank panels, brush strip panels and data/voice panels. Bespoke panels can be offered on request.

Features & Benefits	
• Ideal for the small office/home environment	
• Available with attractive black finish	
• Lockable glass front door	
• Cable access positioned in top and rear of unit	

Specifications	
Wall Mount Cabinet	
Finish	Black powder coat to BS6496
Material	Mild steel to BS1449
Dimensions mm (WxDxH)	300 x 350 x 400
Door	Smoked grey glass
Capacity	8 units (8u)
Shelf	
Finish	Black powder coat to BS6496
Material	Mild steel to BS1449
Dimensions mm (WxDxH)	260 (10") x 140 x 44
Black Panel 1u	
Finish	Black powder coat to BS6496
Material	Mild steel to BS1449
Dimensions mm (WxDxH)	260 (10") x 10 x 44
Black Panel 2u	
Finish	Black powder coat to BS6496
Material	Mild steel to BS1449
Dimensions mm (WxDxH)	260 (10") x 10 x 88
Brush Strip Panel	
Finish	Black powder coat to BS6496
Material	Aluminium alloy 6063 HE9/50s to BS1474
Dimensions mm (WxDxH)	260 (10") x 12 x 44

Ordering Information	
Product	Part Number
Mini Cabinet 8u	RR-W3-8-P
10" Shelf	009-000-004-36
10" Blank Panel 1u	009-001-021-10
10" Blank Panel 2u	009-000-004-42
10" Brush Strip Panel	009-001-020-00



Cabinets and Accessories

Home Cabinets

Racky Rax Home Cabinets have been designed to be the heart of a state of the art home, or small office, networking system. Available in 8 U. This cabinet can house all core equipment and wiring terminations.

8 U Mini Cabinet Capable of holding 8 x 1 U panels, this cabinet has a removable front door which is available as a turn-latch or key locking option. The cabinet also has a backplate which is ideal for fitting a Racky Rax TV Unit. Other size cabinets available made to order in any size required.

Features & Benefits	
• Houses the core home networking equipment	
• Discreet stylish design	
• Capacity for future upgrades	
• Integrated internal power supply available	
• Wall mountable	

Specifications	
Material	Sheet steel
Finish	High gloss white
8 U Slim Line Cabinet	
Dimensions mm (WxDxH)	275 x 150 x 385
Capacity	8 x 1 U

Ordering Information	
Product	Part Number
Slim Line Home Cabinet 8 U	RR-W6-8-S
0.3m RJ45 Patch Lead - Grey	003-304-003-01
0.3m RJ45 Patch Lead - White	003-304-003-02
0.3m RJ45 Patch Lead - Blue	003-304-003-03
0.3m RJ45 Patch Lead - Green	003-304-003-04
0.3m RJ45 Patch Lead - Red	003-304-003-05
0.3m RJ45 Patch Lead - Yellow	003-304-003-06



Cabinets and Accessories

Server Cabinets

Racky Rax Server Cabinets have been designed to offer the optimum housing for servers and networking hardware. Mesh front and rear doors plus a vented roof add up to offer maximum ventilation. The cabinets are fitted with quick release front and rear perforated doors (approximately 60% open), fitted with lockable swing handles. The side panels can be fitted with cabinet locks. The large floor aperture gives maximum cable access, plus there is cabling access in the top. All apertures are fitted with blanking plates as standard.

These 800 wide cabinets have additional cable access next to the rack profiles to allow easy routing of cables from the front to the rear of the cabinet. These Server Cabinets are available in various configurations and are supplied fully assembled on a pallet, but all cabinets can be easily dismantled if required. The high quality attractive black finish ensures the cabinet will complement high specification office environments.

Conforms to the following standards: IEC 297-2, DIN 41494-7, DIN 41491-1, BS 5850/3192

Features & Benefits

- Fully removable steel sides
- Design allows for maximum ventilation
- Lockable doors front and rear
- Adjustable 19" mounting profiles front and rear
- 800 kg static load capacity
- Supplied fully assembled

Accessories

A full range of cabinet accessories are available including; wall mounting frames, PDUs, fixed shelves, telescopic shelves, castors, cage nuts, baying kits, roof mounting fan units and plinths. Ask for further details.

Ordering Information

Product	Part Number
Server Cabinet 12u 600w x 1000d	RR-F5-12-M
Server Cabinet 18u 600w x 1000d	RR-F5-18-M
Server Cabinet 21u 600w x 1000d	RR-F5-21-M
Server Cabinet 24u 600w x 1000d	RR-F5-24-M
Server Cabinet 27u 600w x 1000d	RR-F5-27-M
Server Cabinet 39u 600w x 1000d	RR-F5-39-M
Server Cabinet 42u 600w x 1000d	RR-F5-42-M
Server Cabinet 12u 800w x 1000d	RR-F6-12-M
Server Cabinet 18u 800w x 1000d	RR-F6-18-M
Server Cabinet 21u 800w x 1000d	RR-F6-21-M
Server Cabinet 24u 800w x 1000d	RR-F6-24-M
Server Cabinet 27u 800w x 1000d	RR-F6-27-M
Server Cabinet 39u 800w x 1000d	RR-F6-39-M
Server Cabinet 42u 800w x 1000d	RR-F6-42-M



Cabinets and Accessories

Floor Standing Cabinets

The range of 19" Floor Standing Cabinets are an ideal solution for housing network hardware and patching equipment. The robust design makes them suitable for use in IT departments and offices.

The cabinets are available in various configurations and are supplied fully assembled. Each cabinet utilises a ventilated top and four 19" adjustable front and rear mounting posts. The cabinets feature lift-off sides and a lockable door for maximum access to the internal equipment, with cable access in the base for convenient routing of network cables. The side panels can be fitted with cabinet locks. The cabinet frameworks are finished in black with a Perspex lockable front door.

These 19" Floor Standing Cabinets incorporate the essential features for data communication environments - security, durable construction, easy access and protection from dust or contamination for the network equipment.

Features & Benefits

- Ventilated top
- Adjustable mounting posts
- Lockable Perspex front door
- Lockable and removable rear door
- Cable access in base
- 800 kg static load capacity
- Supplied fully assembled

Ordering Information

Product	Part Number
Floor Standing 12u 600w x 600d	RR-F1-12-P
Floor Standing 18u 600w x 600d	RR-F1-18-P
Floor Standing 21u 600w x 600d	RR-F1-21-P
Floor Standing 24u 600w x 600d	RR-F1-24-P
Floor Standing 27u 600w x 600d	RR-F1-27-P
Floor Standing 39u 600w x 600d	RR-F1-39-P
Floor Standing 42u 600w x 600d	RR-F1-42-P
Floor Standing 12u 600w x 800d	RR-F2-12-P
Floor Standing 18u 600w x 800d	RR-F2-18-P
Floor Standing 24u 600w x 800d	RR-F2-24-P
Floor Standing 27u 600w x 800d	RR-F2-27-P
Floor Standing 39u 600w x 800d	RR-F2-39-P
Floor Standing 42u 600w x 800d	RR-F2-42-P
Floor Standing 21u 800w x 600d	RR-F3-21-P
Floor Standing 27u 800w x 600d	RR-F3-27-P
Floor Standing 42u 800w x 600d	RR-F3-42-P
Floor Standing 27u 800w x 800d	RR-F4-27-P
Floor Standing 39u 800w x 800d	RR-F4-39-P
Floor Standing 42u 800w x 800d	RR-F4-42-P

Accessories

A full range of cabinet accessories are available including; wall mounting frames, PDUs, fixed shelves, telescopic shelves, castors, cage nuts, baying kits, roof mounting fan units and plinths. See the cabinet accessories page.



Cabinets and Accessories

Wall Mounting Cabinet

The compact design of the 19" Wall Mounting Cabinets make them ideal for smaller networks and workgroups. The cabinets are available in various sizes and are supplied fully assembled. Each cabinet comprises a welded steel frame and adjustable front and rear 19" mounting profiles.

Cable access positions with removable plates are situated in the top and bottom of the cabinet. The cabinets feature ventilation slots in the top, have a lockable Perspex front door, and removable sides. The cabinet is finished in a high quality attractive black.

Specifications		
450 Deep Dimensions	450 mm deep x 550 mm wide	
Cable Access Holes	63 mm x 343 mm (1 top 1 bottom)	
Height (U)	Height (mm)	Weight (kg)
6	325	14
9	455	17.5
12	590	21
15	720	24.5
18	855	28
550 Deep Dimensions	550 mm deep x 550 mm wide	
Cable Access Holes	63 mm x 343 mm (1 top 1 bottom)	
Height (U)	Height (mm)	Weight (kg)
6	325	15
9	455	18
12	590	20.5
15	720	24
18	855	27.5
21	990	31

Features & Benefits	
<ul style="list-style-type: none">• Ventilated top• Adjustable mounting posts• Removable side panels• Removable cable plates access in base and top• Lockable glass front door• Supplied fully assembled	



Ordering Information	
Product	Part Number
Wall Mounting Cabinet 6u 450mm Deep	RR-W1-6-G
Wall Mounting Cabinet 9u 450mm Deep	RR-W1-9-G
Wall Mounting Cabinet 12u 450mm Deep	RR-W1-12-G
Wall Mounting Cabinet 15u 450mm Deep	RR-W1-15-G
Wall Mounting Cabinet 18u 450mm Deep	RR-W1-18-G
Wall Mounting Cabinet 6u 550mm Deep	RR-W2-6-G
Wall Mounting Cabinet 9u 550mm Deep	RR-W2-9-G
Wall Mounting Cabinet 12u 550mm Deep	RR-W2-12-G
Wall Mounting Cabinet 15u 550mm Deep	RR-W2-15-G
Wall Mounting Cabinet 18u 550mm Deep	RR-W2-18-G
Wall Mounting Cabinet 21u 550mm Deep	RR-W2-21-G

Cabinets and Accessories

High Density Patching Frame

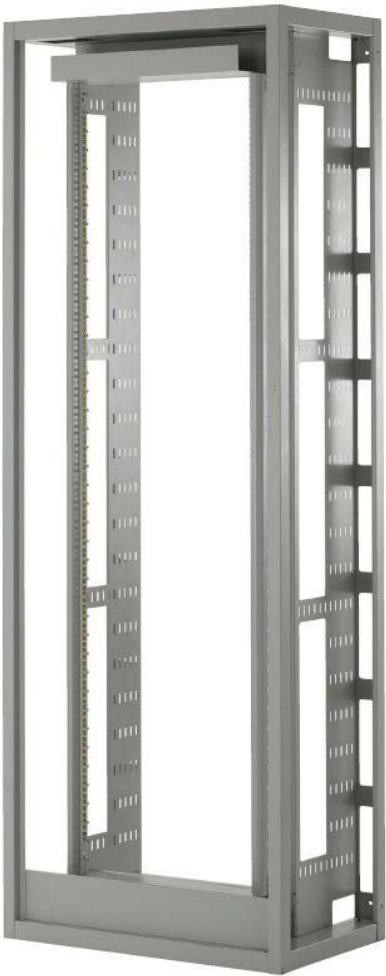
The High Density Patching Frame is a simple solution for housing 42 x 24 way patch panels. The frame is also suitable for the mounting of active equipment and the accommodation of standard power distribution units. The frame comes fully assembled and is of welded steel construction. It's designed to have no tight corners or sharp edges - the edges are radiused in key areas to prevent over stressing of cables.

A 3-way roof mounting fan unit is available if additional cooling is required, as are optional lockable doors and removable rear or side panels. Patching frames can be installed separately, side by side, back to back or against a wall depending on available space and customer requirements.

Features & Benefits	
<ul style="list-style-type: none">• Strong welded steel construction• Optional lockable front door and removable rear or side panels• 3-way roof mounting fan unit available• No sharp edges or tight corners (prevents over stressing of cables)• Supplied fully assembled	

Accessories	
A full range of cabinet accessories are available including; PDUs, fixed shelves, telescopic shelves, cage nuts, roof mounting fan units and plinths. See the cabinet accessories page.	

Ordering Information	
Product	Part Number
42u High Density Patching Frame	009-000-052-43
42u Patching Frame Side Panel	009-000-052-50
42u Patching Frame Rear Door	009-000-052-51
42u Patching Frame Lockable Front Door	009-000-052-58



Cabinets and Accessories

Wall Mounting Frames

The 19" Wall Mounting Frames are an ideal alternative when a lockable cabinet isn't required. They are ideal for mounting patch panels and other shallow 19" rack mount equipment, and their lightweight construction means they can be mounted on virtually any wall.

Features & Benefits

- Ideal for installation sites where space is limited such as risers and shafts
- Standard finish black (other colours on request)
- Easy access to internal equipment
- Manufactured in the UK

Accessories

A full range of cabinet accessories are available including; PDUs, fixed shelves, telescopic shelves, castors, cage nuts, baying kits, roof mounting fan units and plinths.

Ordering Information

Product	Part Number
2u 19" Wall Mounting Frame 200mm Deep	009-000-032-02
3u 19" Wall Mounting Frame 200mm Deep	009-000-032-03
4u 19" Wall Mounting Frame 200mm Deep	009-000-032-04
6u 19" Wall Mounting Frame 200mm Deep	009-000-032-06
3u 19" Wall Mounting Frame 350mm Deep	009-000-034-03
6u 19" Wall Mounting Frame 350mm Deep	009-000-034-06



Cabinets and Accessories

Fan Trays

Racky Rax Fan Trays are designed to keep networking equipment cooler by increasing airflow through the cabinet.

Specially designed to fit on the roof of Racky Rax cabinets, the Fan trays come complete with either two or four high quality, low noise fans; and are powered via a standard UK 240V plug.

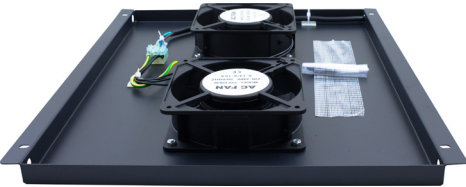
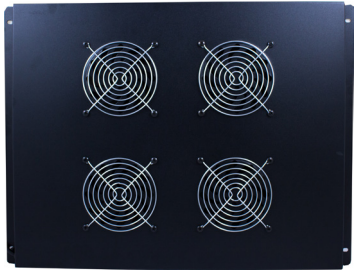
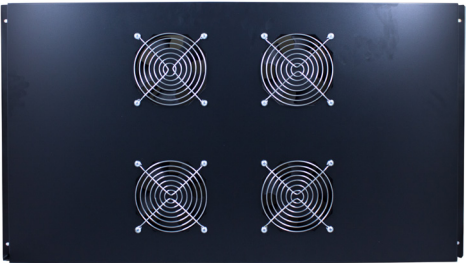
The 2 way RR-FT-2 is for use in 600 by 600 mm or 800 by 600 mm cabinets; the 4 way RR-FT-4 is for 600 by 800 mm or 800 by 800 mm cabinets and the 4 way RR-FT-14 is for 800 by 1000 mm.

Ordering Information

Product	Part Number
2 Way Fan Tray <i>(Compatible with 600 x 600 mm & 800 x 600 mm cabinets)</i>	RR-FT-2
4 Way Fan Tray <i>(Compatible with 600 x 800 mm, 800 x 800 mm cabinets)</i>	RR-FT-4
4 Way Fan Tray <i>(Compatible with 800 x 1000 mm cabinets)</i>	RR-FT-14

Dimensions

2 Way Fan Tray <i>(Compatible with 600 x 600 mm & 800 x 600 mm cabinets)</i>	415 x 355 mm
4 Way Fan Tray <i>(Compatible with 600 x 800 mm, 800 x 800 mm cabinets)</i>	415 x 555 mm
4 Way Fan Tray <i>(Compatible with 800 x 1000 mm cabinets)</i>	415 x 755 mm



Cabinets and Accessories

Accessories

The range of cabinet accessories complement the variety of floor standing and wall mounted cabinets. Combined together, these products offer a complete cable patching solution.

Heavy duty castors can be fitted to raise the cabinet clear of the floor and allow the cabinet to be moved across even surfaces. Cage nuts are used to fix internal equipment into the cabinet. Earth bonding kits enable two cabinets to be joined together. Steel plinths fit Beneath the cabinet to allow cable access from the base, sides and rear and are available in various widths and depths. Vertical Cable Management offers an ideal way to keep your cabling tidy and maximise airflow.

Ordering Information	
Product	Part Number
Cage Nuts and Bolts (50)	RR-A1
Earth Bonding Kit (2)	RR-A2
Cabinet Feet (4)	RR-A3
Heavy Duty Castors 1000kg	RR-C-1
Standard Castors 300kg	RR-C-3
4 Ring Cable Management Bar	RR-A6
5 Ring Cable Management Bar	RR-A7
Brush Strip Panel	RR-A8
1u Blank Panel	009-001-009-00
2u Blank Panel	009-001-009-01
3u Blank Panel	009-001-009-02
1u Dump Panel	RR-DP1
2u Dump Panel	RR-DP2
Vertical Cable Management 18U	RR-A5-18
Vertical Cable Management 27U	RR-A5-27
Vertical Cable Management 39U	RR-A5-39
Vertical Cable Management 42U	RR-A5-42
Plinth 600 x 600 mm	RR-PL-6060
Plinth 600 x 800 mm	RR-PL-6080
Plinth 800 x 800 mm	RR-PL-8080
Cantilevered Vented Shelf 1U 300 mm	RR-S1
Cantilevered Vented Shelf 1U 400 mm	RR-S2

Ordering Information	
Product	Part Number
Fixed Vented Shelf 315 mm	RR-S3
Fixed Vented Shelf 515 mm	RR-S4
Fixed Vented Shelf 715 mm	RR-S5
Adjustable Shelf 450m	RR-S10
Adjustable Shelf 550m	RR-S11
Adjustable Shelf 600m	RR-S12
Adjustable Shelf 600-800D Rack	RR-S20
Adjustable Shelf 800-1000D Rack	RR-S21
Adjustable Shelf 1000-1200D Rack	RR-S22



Cabinets and Accessories

Power Distribution Units

Racky Rax's full range of high quality BS1363 UK outlet Power Distribution Units (PDU) range with a built-in blue LED quality ammeter, available with or without Surge Protection. Our PDUs have multiple outputs designed to distribute electric power, to racks of computers and networking equipment.

When facing challenges in power protection and management solutions you can rely on a PDU monitoring to improve efficiency, uptime, and growth. Our vertical PDUs fit by mounting onto the back profile of a floor standing cabinet.

Ordering Information	
Product	Part Number
4 Way 1U Horizontal PDU	RR-P1-4
6 Way Vertical PDU	RR-P2-6
8 Way Vertical PDU	RR-P2-8
10 Way Vertical PDU	RR-P2-10
12 Way Vertical PDU	RR-P2-12
10" Cabinet 4 Way 1U Horizontal PDU	RR-P1-4-10

Features & Benefits	
• Robust all aluminium housing	
• BS1363 UK Sockets	
• Internal RMS Current Ammeter	
• External earth facility	
• Choice of standard and filtered solutions with input plug variants	



Cabinets and Accessories

Bespoke Cabinets & Accessories

We have the ability to manufacture bespoke secure sheet metal cabinets for the data networking and electronics industries. Our Racky Rax premises consists of 40,000 sq ft factory space. All punch and fold requirements are easily managed by our state-of-the-art Amada machinery, automated sheet loader and press brakes.

Our Powder Coating facility is currently the most advanced powder-coating plant available, which, as well as offering a higher quality finish, allows us to reduce our lead times even further in addition to having complete control of our manufacturing process from initial enquiry to final delivery. As a result we are also able to offer sub-contracting coating services.

Our in-house design team can take initial sketches, ideas or concepts and produce fully rendered 3D visuals. Once approved, prototypes can be manufactured in a short space of time. We take pride in our ability to produce a quick turnaround from idea to fully manufactured product.



3D Visual example of 600 wide 3 way colocation cabinet

Ordering Information

If you require bespoke cabinet solutions for your installation please contact: sales@Racky Rax.co.uk



Racky Rax Ltd, 500 Avenue West, Skyline 120, Braintree, Essex, CM77 7AA

T: 01376 346600 F: 01376 346620 E: sales@Racky Rax.co.uk
www.Racky Raxcabling.com

