

ELMDENE INTERNATIONAL LIMITED
3 KEEL CLOSE
INTERCHANGE PARK
PORTSMOUTH
HAMPSHIRE
PO3 5QD, UK

TEL: +44 (0) 23 9269 6638
FAX: +44 (0) 23 9266 0483

www.elmdene.co.uk



QFT Contact Wiring Guide

Product designed to meet the requirements of DD CLC/TS 50131-2-6:2004 Grade 2 and Environmental Class II. Suitable for use in systems designed to comply with PD6662:2004 + A1+ A2

Contact / Control Panel Colour Codes Spectrum Range

This table details the Contact colour coding system used to associate a Contact with the correct value resistors for your chosen Control Panel. The colour code is a suffix to the Contact product code. For example QFT-RD denotes a Red Contact with 4K7 and 2K2 resistors fitted.

Code	Colour	Resistor Values (Shunt/EOL)	Control Panel
RD	Red	4k7 / 2k2	ADE, Bosch, Castle, Menvier, Pyronix, Scantronic, Texecom
GN	Green	1k / 1k	Honeywell
BL	Blue	8k2 / 8k2	Guardall
GY	Grey	4k7 / 4k7	Aritech, Pyronix
PU	Purple	6k8 / 4k7	Guardtec
YL	Yellow	2k2 / 2k2	Bosch, Europlex
OR	Orange	5k6 / 5k6	DSC

Features

- 20mm diameter flush terminal contact
- Tampered Cover
- Single door operation
- Built-in EOL Resistors for use in FSL systems

Operating

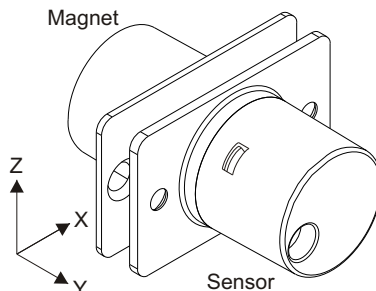
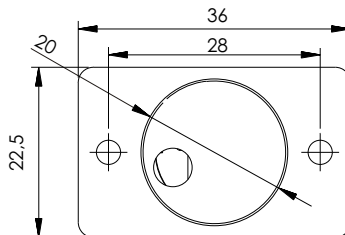
Distances (mm)

Non-Ferrous Surface
(e.g. Wood, PVC,
Aluminum)

Y	Min Close	10
	Max Open	18
+/- X	Min Close	13 [#]
	Max Open	25 [#]
Z	Min Close	5 [#]
	Max Open	12 [#]

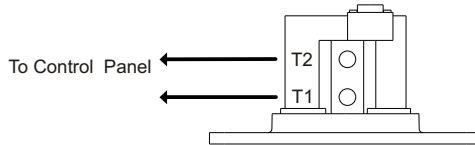
At Y = 6mm

Fixing Positions

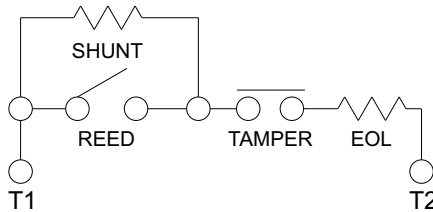


FSL/EOL

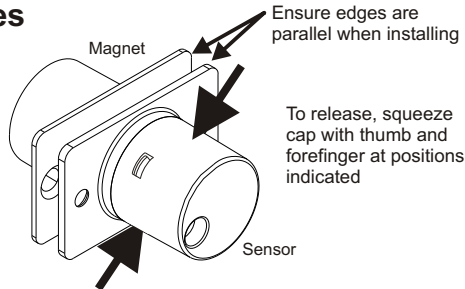
Figure 1 - **Single Leaf Door Arrangement**



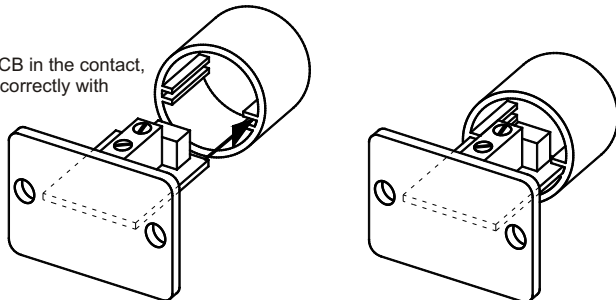
Circuit Diagram



Installation Notes



When fitting the cap over the PCB in the contact, ensure that the PCB is aligned correctly with locating ribs in the cap:



Specifications

Contact

Material	Rhodium
Power Handling	10VA
Voltage Rating	100Vdc, 150Vac Max
Current Rating - switch	1.0A Max
Current Rating - carry	1.5A Max
Resistance	<300mohms
Operating Life	>1 x 10 ⁸ operations

Housing

Material	Plastic - ABS
Flange Dimension	36 x 22.5 x 1.5mm
Body Dimension	DIA 20mm
Body Depth	20mm
Fixing Dimensions	28 mm centres
Mounting Screws	M3
IP Rating	IP40
Temperature Range	-10°C to +40°C

Material	Plastic - ABS
Flange Dimension	36 x 22.5 x 1.5mm
Body Dimension	DIA 20mm
Body Depth	20mm
Fixing Dimensions	28 mm centres
Mounting Screws	M3
IP Rating	IP40
Temperature Range	-10°C to +40°C