

IDEAL FOR  
CCTV  
INSTALLS

# BT5952

## ACCESSORY COLLAR

### FOR Ø38MM POLES

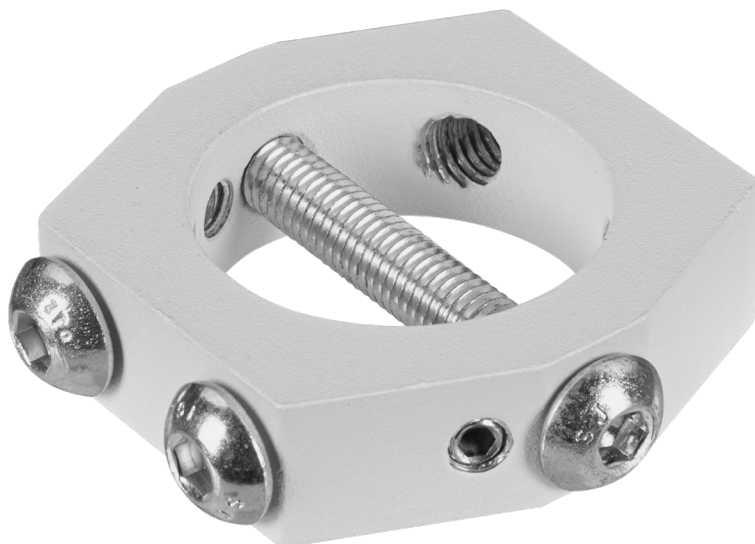
The BT5952 is a Ø38mm Accessory Collar from B-Tech's System V Range; a collection of components designed for the installation of CCTV and other ceiling mounted equipment. Designed for use with BT5935 Ø38mm poles, the collar features dual fixing points for single or back-to-back installations and enables interfaces such as flat screen mounts to be attached to poles, allowing professionals to customise ceiling mounted security solutions to their specific requirement.

#### SPECIFICATION

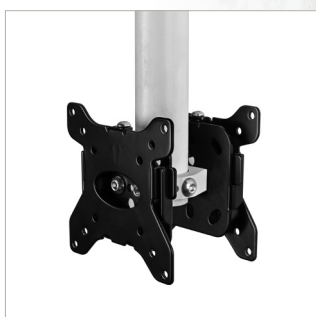
Compatible pole diameter:	Ø38mm
Collars per pack	1
Colour	White

#### FEATURES

- Allows a wide range of mounts and accessories to be fitted to Ø38mm poles
- Dual fixing points allow back-to-back installations onto a single collar
- Safety bolt ensures accessories are fixed securely to the pole
- Made with heavy-duty steel for durability



Made with heavy-duty steel for durability



Dual fixing points allow back-to-back installations onto a single collar

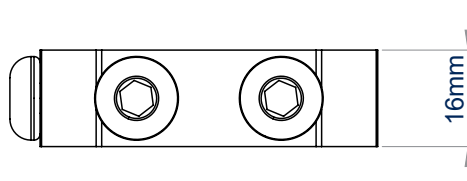


Allows a wide range of mounts and accessories to be fitted to Ø38mm poles

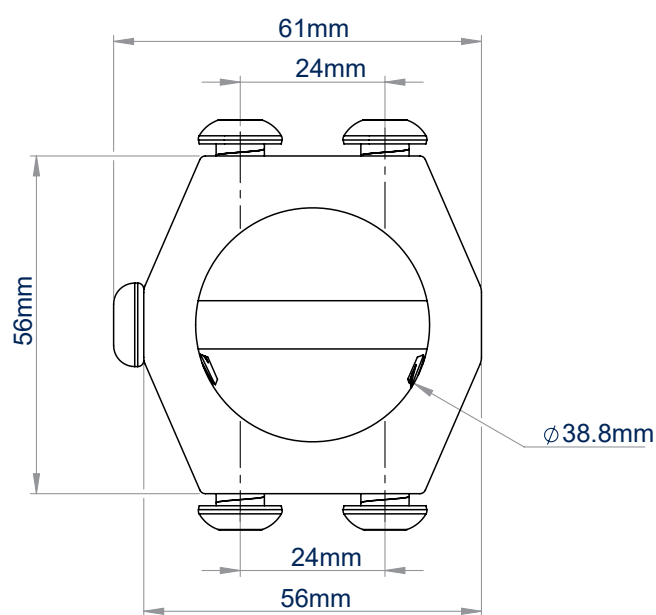


Safety bolt ensures accessories are fixed securely to the pole





FRONT VIEW

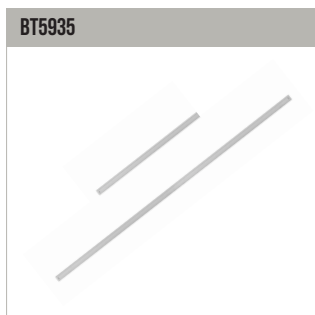


TOP VIEW

## PACKING INFORMATION

COLOUR:	ORDER REF:	EAN CODE:	CARTON QTY:	INNER CARTON QTY:	MASTER CARTON WEIGHT:	MASTER CARTON CUBE:
White	BT5952/W	5019318304101	52	N/A	10kg	0.017cbm

## RELATED PRODUCTS



### 38mm diameter poles

Available in 1 metre or 2 metre lengths



### Fixed Ceiling Mount

**Fixed Ceiling Mount**  
Mounts a BT5935 ø38mm pole to the ceiling



### Flat Screen Mount

Attach screens with fixings up to VESA 100 to a BT5952 Accessory Collar



### Flat Screen Mount with Tilt

Attach screens with fixings up to VESA 100 to a BT5952 Accessory Collar