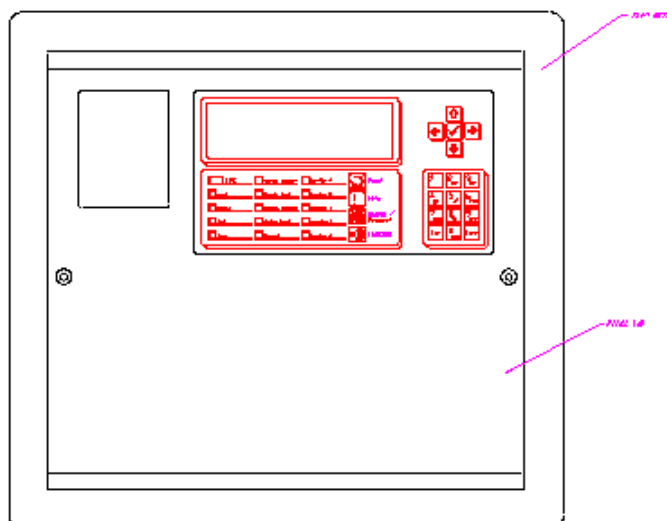


### Bezel Fitting Instructions

#### Introduction

These instructions cover the installation of the bezel assembly to the Mx4000 range of Fire Alarm Control Panels and Remote Terminals. The installation of the bezel to each model is similar in arrangement. The bezel can be mounted such that the panel can be installed into the wall either flush or semi-flush in accordance with the following table:

Model	Semi-Flush	Fully Flush
Mx4010	Yes	No
Mx4020	Yes	No
Mx410X	Yes	No
Mx420X	Yes	Yes
Mx440X	Yes	Yes
Mx480X	Yes	Yes



The bezel assembly must be fitted to the panel before the panel can be installed. For further information on installing the panels, refer to the following manuals – 680-014 (Mx4000 Series Installation Manual), 680-038 (Mx4800 Installation Manual), 680-029 (Mx4010/4020 Manual).

#### Fitting the Bezel

##### Preparation

- 1) Firstly, unlock and open the door, or remove the cover.
- 2) Loosen the chassis fixing screws, unplug the chassis earth lead and remove the chassis assembly from the enclosure – set aside in a safe place for re-assembly later.
- 3) Prepare the knockouts for the required installation wiring (refer to the relevant installation manual for further details)
- 4) Close and lock the door, or replace the cover as appropriate.

## Mx4010, Mx4020

- 1) Lay the panel front face down on a clean dry surface.
- 2) Slide the bezel assembly over the panel until it rests against the rear edge of the front cover.
- 3) Use a proprietary adhesive tape to temporarily hold the bezel assembly to the back box.
- 4) Using the holes in the bezel assembly as a guide, drill through the back box using a 5.0mm drill bit in the four positions available.
- 5) Remove the cover and clear any swarf from inside the enclosure using a soft brush.
- 6) Affix the bezel assembly to the panel using the four M4 screws, nuts and washers supplied.

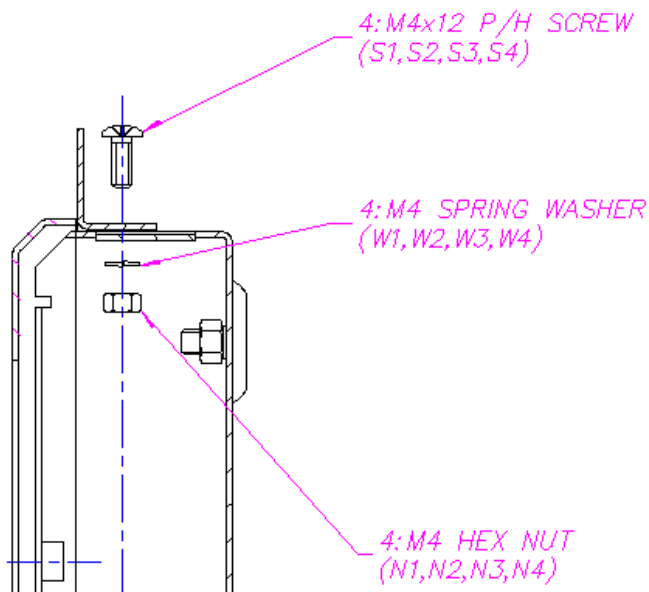


Figure 1 - Section View of Mx4010/Mx4020.

## Mx410X

- 1) Lay the panel front face down on a clean dry surface.
- 2) Slide the bezel assembly over the panel until it rests against the rear edge of the front cover.
- 3) Use a proprietary adhesive tape to temporarily hold the bezel assembly to the back box.
- 4) Using the holes in the bezel assembly as a guide, drill through the back box using a 5.0mm drill bit in the six positions available.
- 5) Remove the cover and clear any swarf from inside the enclosure using a soft brush.
- 6) Affix the bezel assembly to the panel using the six M4 screws, nuts and washers supplied.

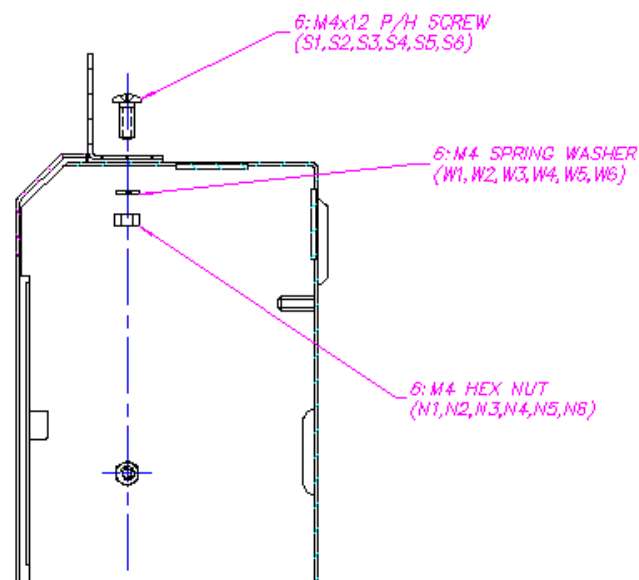
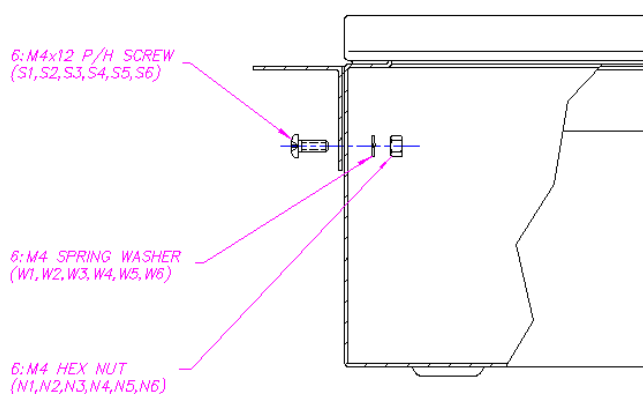


Figure 2 - Section View of Mx4100.

## **Mx420X, Mx440X, Mx480X**

- 1) Lay the panel front face down on a clean dry surface.
- 2) For semi-flush mounting, slide the bezel assembly over the panel until the top face of the bezel is in line with the top of the back box.
- 3) Use a proprietary adhesive tape to temporarily hold the bezel assembly to the back box.
- 4) Using the holes in the bezel assembly as a guide, drill through the back box using a 5.0mm drill bit in the six positions available.
- 5) Unlock and open the door and clear any swarf from inside the enclosure using a soft brush.
- 6) Affix the bezel assembly to the panel using the six M4 screws, nuts and washers supplied.



**Figure 3 - Section View of Mx4200 showing semi-flush mounting.**

The bezel assemblies for the Mx420X, Mx440X and Mx480X panels may be fitted such that the panel can be mounted in any arrangement from a semi-flush to a full flush condition.

Follow the instructions above but adjust the position of the bezel to suit requirements before temporarily taping into position.

Note: In a surface mount or semi-flush arrangement, the door will open to about 115° - when the bezel is mounted in a fully flush position, the will only open to 90°.

## **Installing the Panel**

Replace the chassis assembly remembering to connect the earth lead to the enclosure.

The aperture in the wall should be cut out to easily accommodate the panel without having to force the panel into the wall. Allowance should also be made for the installation wiring and cable glands installed in the panel.

It is recommended that the aperture be 20mm wider and 20mm higher than the width and height of the panel. The depth of the aperture will depend on the panel.

When the aperture is cut out, offer the panel up to the aperture and check for fit. Adjust as required and then mark the positions of the standard panel fixing points.

Install all of the required wiring and cable glands into the panel.

Insert the panel into the aperture and fix in position using the standard fixing points on the rear of the back box. Refer to the appropriate installation manual for details of these positions and the recommended expansion plugs and fixing screws.

Continue the installation and programming of the panel as described in the appropriate manuals as supplied with the panel.

Document Reference	680-046	Rev	01	Author	PS	RFM-MXM-032	Page	3 of 3
--------------------	---------	-----	----	--------	----	-------------	------	--------