



75" Interactive Flat Panel Display - IFM Series

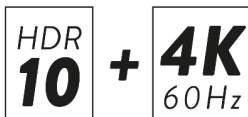


Key Features



Collaborate, Annotate with Oktopus

Collaborate: View lessons, respond, share annotations, and take notes using any tablet or laptop. Annotate: Works over browser content & existing applications. Poll: Pose questions and gain immediate participant feedback, displaying results instantly.



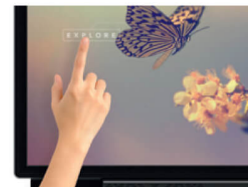
HDR10 & 4K HDMI @60Hz

Displays supporting HDR10 allows HDR based content to be shown, giving a brighter and more dynamic picture. This is further enhanced due to the support of 4K 60Hz, allowing ultra sharp, smooth Video content to be presented.



Anti Glare Tempered Glass

Prevents light reflection and provides smooth touch performance with anti glare technology. Robust design with toughened glass material to avoid any damage to the screen.



Simultaneous Smooth writing Multi - Touch

10 point touch support detects multiple touch points, enhancing the possibility of collaborative work. The screens also provide a precise and user friendly writing experience with its smooth surface.

PANEL

Screen Size	75"
Panel Technology	IPS
Backlight Type	Direct-Type LED
Brightness (typical)	400 cd/m²
Native Resolution	3840 x 2160 (16:9) - UHD
Contrast Ratio (typical)	1200:1
Dynamic Contrast Ratio	40000:1
Panel Life Time (Min.)	30000 Hrs
Panel Life Time (Average)	8 ms
Active Area (H x V)	1650 x 928 mm
Pixel Pitch (H x V)	0.429 x 0.429 mm
PPI (pixel per inch)	59
Viewing Angle	178° Vert., 178° Hor. (89U/89D/89L/89R) @ CR>10
Color Value	1.07 B (10-bit)
Screen Treatment	2H
Haze Level	3%
Refresh Rate	60 Hz
Front Type	Touch Bezel Type
Orientation	Horizontal
Operation Hours	16/7 Panel
Area of Usage	Indoor

MAINBOARD

Mainboard Model	17MB135VS
-----------------	-----------

MONITOR CONNECTIVITY

RGB Input	VGA(DE-15F)
RGB Output	N/A
Video Input	4xHDMI2.0, 2xUSB2.0, USB2.0(Internal)
Video Output	HDMI2.0
Audio Input	Line In L/R
Audio Output	Headphone, Optic SPDIF
External Control	RS232(DE-9F), Ethernet(RJ45), Service(RJ12)
External Sensor	RJ12

TOUCH TECHNOLOGY

Type of Touch Technology	Infrared (IR) Technology
Supported Point	10 Points
Sensitivity	Any touch with finger, gloved hand or pointer
Connectivity	HID, TUIO, Flash
Supported OS and Applications	Windows® 7, Windows® 8, Windows® 10, Vista, XP, Mac® OS, Linux, Android
Orientation	Landscape support
Calibration	No need
Accuracy	%90 <
Reporting Rate	Up to 450 fps
Glass Type	Anti Glared (AG), 4mm Tempered
Frame Rate	up to 450 fps
Communication	USB 2.0
Power Supply Mode	USB
Supply Voltage	DC 5V +/- 5%
Average Current	<400mA
Response Time	<10ms
Touch Accuracy	+/-2mm (over 90% area)
Object Sizes for Touch	5mm
Touch Durability	Unlimited
HID Compatibility	Yes USB

MECHANICAL

Product Dimensions (WxDxH)	1731 x 119 x 1008 mm
Package Dimensions (WxDxH)	1990 x 265 x 1227 mm
Product Weight	58.3 kg
Package Weight	72.3 kg
Vesa Mounting	600 x 400 mm
Bezel Width	B:38 T:38 L/R:38 mm

ENVIRONMENTAL CONDITIONS

Operating Temperature	+40°C / 0°C
Operating Humidity	90%

POWER

Power Supply	110 VAC - 240 VAC
--------------	-------------------

POWER CONSUMPTION

Typical	220 W
Deep Standby	≤0.5W

FEATURES

Main Features	Open Content Management Support, Scheduler, USB-Autoplay, Auto-Launch, HDMI-CEC, HDMI-Hotplug, Auto-switch on Failover, Panel Lock, OSD Rotation, NoSignalPowerOff, Screen Saver, Pixel shift, Scheduler, Videowall support, remote control via LAN, Real Time Clock
Mechanical Features	Joystick, IR Extender Support, Rocker Switch, Detachable power cable, Carrying slots, Detachable logo positioning, Internal usb cover, Cable Holder
Optional Features	OPS Compliance
Speaker	2 x 12 W

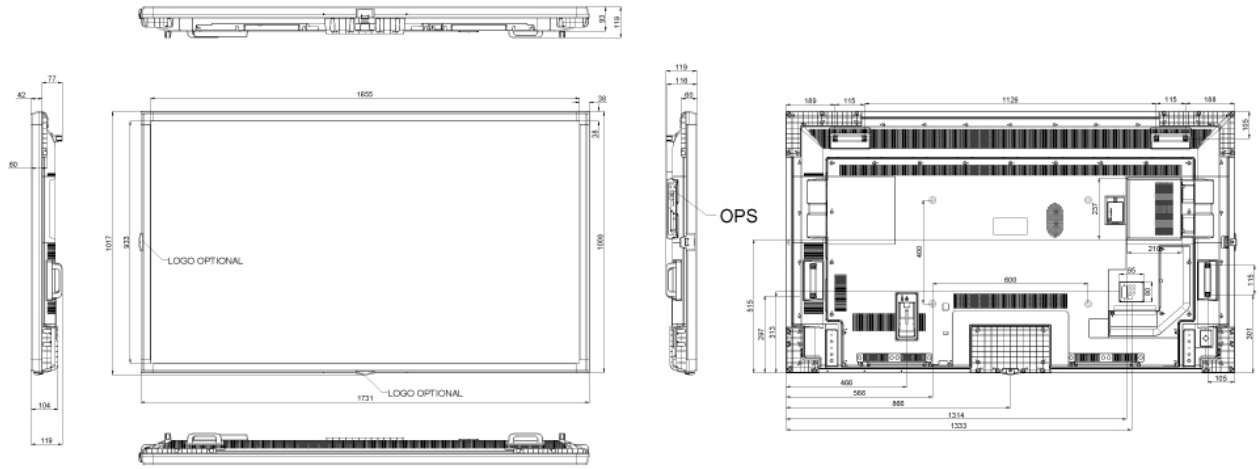
ACCESSORY

Standard	QSG, IB, Power Cord, Remote Control Unit, RC Battery, Mounting Kit, Extension Brackets, IR Extender Cable
----------	---

CERTIFICATION

Safety	YES
EMC	YES
CE	YES
Reability Approval	YES

REV	REV	REV
1	2	3
4	5	6



MODEL 75495 IFPD	DIMENSIONS (mm)		
	WIDTH mm	DEPTH mm	HEIGHT mm
PRODUCT	1731	119	1008
PACKAGING	1990	265	1227



TOLERANCES	K	NAME	75495 IFPD	REV	R01
100/500	±0.10	CREATED	HOSEYIN CIFTCI	DATE	04.01.2019
500/1000	±0.30	LAST REV.	NOHAT UZTEN	SHEET	1 / 1
1000/2500	±0.50	CHECK	Hakan KOPUNCIOGLU	SCALE	1:1
2500/5000	±0.75	APPROV.	Deniz CETINUREK	UNIT	mm
5000/10000	±1.00	VESTEL VESTEL ELECTRONICS / ELKAL PRODUCTIONS OPERATIONS MANUFACTURING TEL: +90 362 2500660 FAX: +90 362 2500550			
10000/25000	±1.50				
ANGLES	±0.5°				