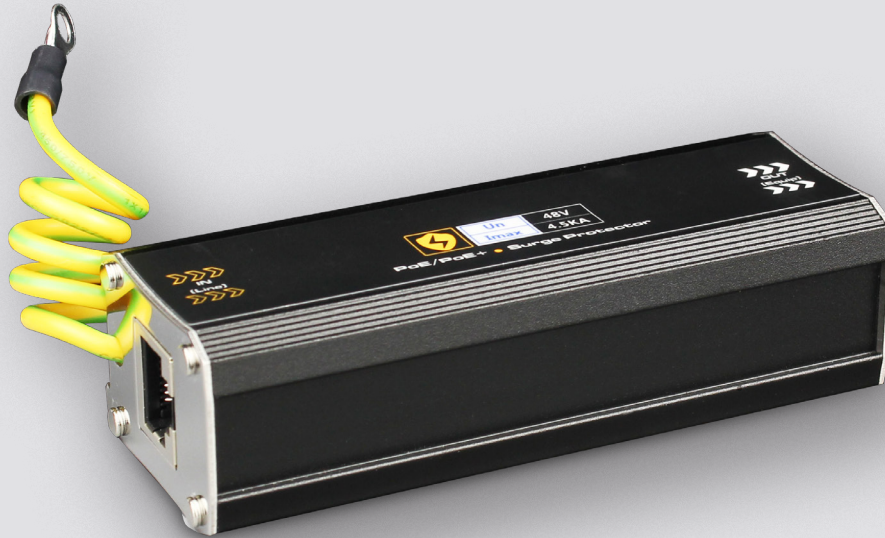


GSP1000

SURGE PROTECTOR

PoE Surge Protector – 10 / 100 / 1000 Mid / End Span



Key Features

- Standard: IEC61643-21:2000
- PoE and PoE+. Compatible with End-span and Mid-span
- Multi-function and multi-level over voltage protection, large capacity discharge current, low limiting voltage, quick reacting time, low inserting loss
- Grounding mode: Extending Line to ground
- Simple installation

The Genie **GSP1000** is a surge protector designed for both network and power. It features multi-level protection, large maximum discharge current, low limiting voltage, quick reacting time, low inserting loss and supports 10/100/1000 PoE Ports.



Specification

Ethernet

Working Voltage (Un)	5V
Nominal Discharge Current (In)	3KA
Maximum Discharge Current (Imax)	5KA
Protection Level (Up)	25V
Rate	10/100/1000Mbps
Response Time	1ns
Insertion Loss	0.5dB
Connector	RJ45
Protection Circuit	1/2 3/6 4/5 7/8

Power

Working Voltage (Un)	48V
Nominal Discharge Current (In)	3KA
Maximum Discharge Current (Imax)	5KA
Protection Level (Up)	200V
Protection Circuit	1/2 3/6 4/5 7/8

Others

Operation Temperature	-40°C~85°C
Storage Temperature	-40°C~75°C
Humidity	0~95%
Dimensions	100 × 37 × 27 mm
Weight	100g

Application

