

Figure 5
Contact Resistor + End of Line Resistor (Parallel) - Single Leaf Door Arrangement

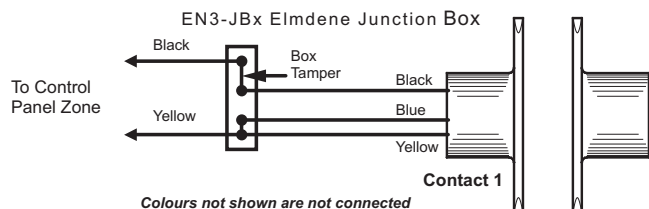
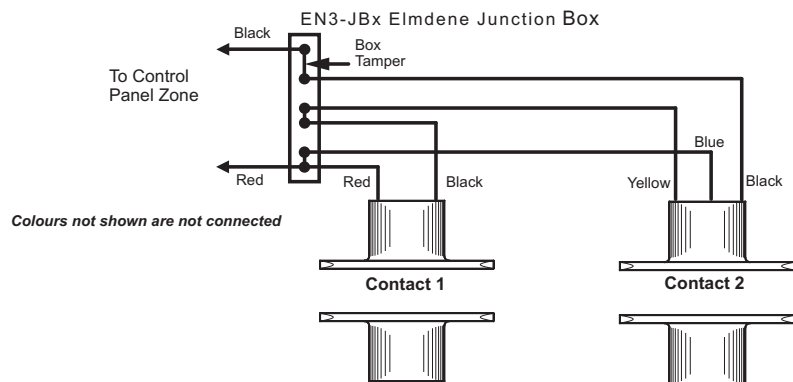


Figure 6
Contact Resistor + End of Line Resistor (Parallel) - Double Leaf Door Arrangement



Patent Pending

ELMDENE INTERNATIONAL LIMITED
3 KEEL CLOSE
INTERCHANGE PARK
PORTSMOUTH
HAMPSHIRE
PO3 5QD, UK

TEL: +44 (0) 23 9269 6638
FAX: +44 (0) 23 9266 0483

www.elmdene.co.uk



EN3-QFC Contact Wiring Guide

Product designed to meet the requirements of DD CLC/TS 50131-2-6:2004 **Grade 3** and Environmental **Class III**. Suitable for use in systems designed to comply with PD6662:2004 + A1+ A2

6 Wire Contact with built in resistors for use in Fully Supervised Loop or standard Double Pole systems, using Single or Multiple doors. See colour code chart below for matching Contact resistors to your Control Panel. This flush mounted magnetic contact is designed to meet the requirements of TS50131-2-6:2004 for immunity to the effects of an external interfering magnet when installed as shown overleaf.

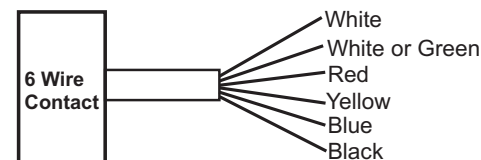
Contact / Control Panel Colour Codes Spectrum Range

This table details the Contact colour coding system used to associate a Contact with the correct value resistors for your chosen Control Panel. The colour code is a suffix to the Contact product code. For example EN3-QFC-RD denotes a Red Contact with 4K7 and 2K2 resistors fitted. This table does NOT refer to WIRE colours; see Contact Wiring below for details of wire colours.

Code	Colour	Resistor Values	Connection Mode	Control Panel
RD	Red	4k7 / 2k2	Series	ADE, Bosch, Castle, Menvier, Pyronix, Scantronic, Texecom
GN	Green	1k0 / 1k0	Series	Honeywell
BL	Blue	8k2 / 8k2	Parallel	Guardall
GY	Grey	4k7 / 4k7	Series	Aritech, Pyronix
PU	Purple	6k8 / 4k7	Series	Guardtec
YL	Yellow	2k2 / 2k2	Series	Bosch, Europlex

Note: DO NOT SHORTEN CABLE BEFORE READING THE FOLLOWING PARAGRAPH.

The contact wires have been colour coded using coloured sleeving. The core wires are not coloured inside the sheath. To shorten the overall cable length, strip the sheath using the rip cord and slide the sleeves down to the required length. Then cut the cable to the required length - ensuring the coloured sleeves remain on the core wires to enable easy installation.



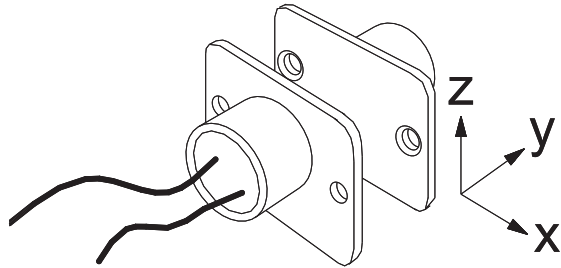
Contact can be used in the following formats:

- ◆ Standard double pole - Single and double leaf doors - Figures 1 & 2
- Fully supervised loop - Single leaf door - Series mode connection - Figure 3
- Fully supervised loop - Double leaf doors - Series mode connection - Figure 4
- Fully supervised loop - Single leaf door - Parallel mode connection - Figure 5
- Fully supervised loop - Double leaf doors - Parallel mode connection - Figure 6

Specifications

Contact			Sensor Housing	Magnet Housing
Material	Rhodium	Material	Plastic - ABS	Plastic - ABS
Power Handling	10VA			
Voltage Rating	30Vdc	Flange Dimensions	36.5 x 22.5mm	36.5 x 22.5mm
Current Rating	1.0A Max	Body Dimensions	Ø20.0 x 23.0mm	Ø20.0 x 27.0mm
Resistance	<300mohms			
Operating Life	>1 x 10 ⁸ operations	Mounting Screws	M3	M3
		Fixing Dimensions	28mm centres	28mm centres
		IP Rating	IP 40	IP 40
		Temperature Range	-10°C to +40°C	-10°C to +40°C

Installation Notes



Switch mounted on
Non-Ferrous Surface
(e.g. Wood, PVC, Aluminum)

Operating Distances

Y	Min Close (mm)	13
	Max Open (mm)	21
+/- X	Min Close (mm)	5 [#]
	Max Open (mm)	13 [#]
Z	Min Close (mm)	10 [#]
	Max Open (mm)	18 [#]

[#]At Y = 6mm

Figure 1

Standard **Double Pole** Wiring (No resistors) - Single Leaf Door Arrangement

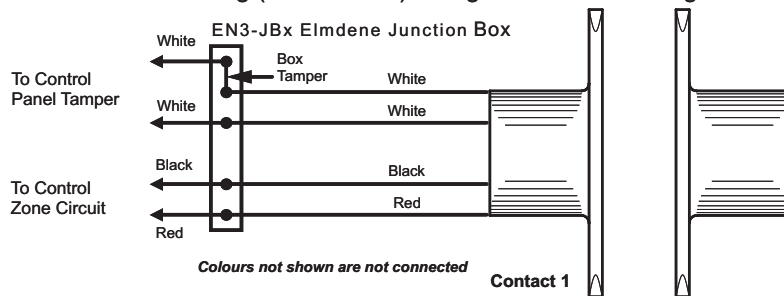


Figure 2

Standard **Double Pole** Wiring (No resistors) - Double Leaf Door Arrangement

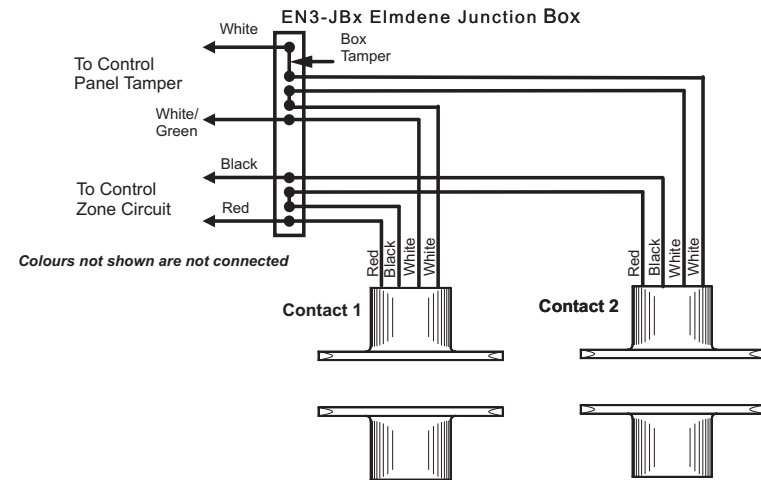


Figure 3

Contact Resistors + **End of Line Resistor (Series)** - Single Leaf Door Arrangement

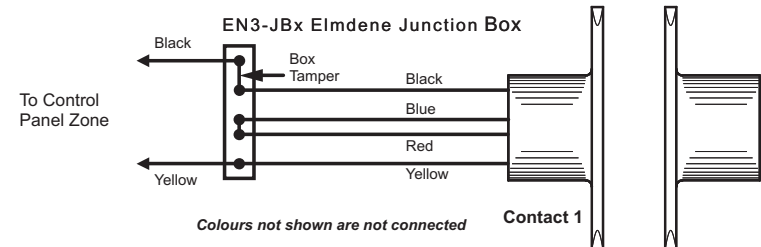


Figure 4

Contact Resistors + **End of Line Resistor (Series)** - Double Leaf Door Arrangement

