

Electric Mini Bolt

EB501-22 - Instructions

Technical Information

Power to Lock/Fail open monitored

Stainless steel bolt - diameter 12mm
- throw 12mm

Voltage required 12vDC

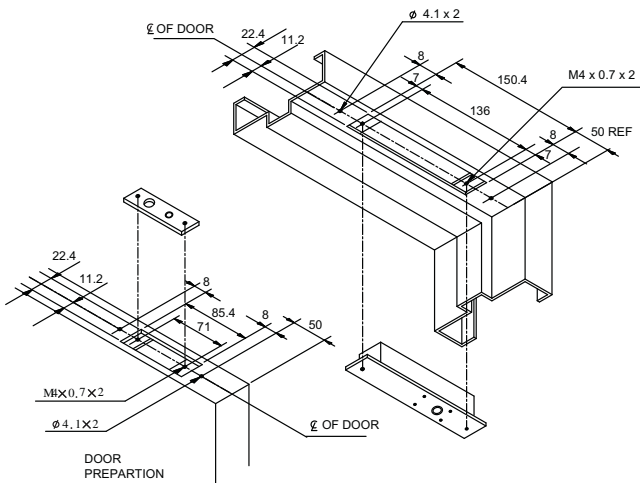
Activating current 0.7A

Holding current 100 mA

Fully protected against transients and reverse polarity

The Autolock Time Delay can be set for 0, 3, 6 or 9 seconds.

Monitoring - Door position switch (DSS)



GENERAL INSTALLATION INSTRUCTIONS

- 1 Ensure you have the following:-
 - Strike plate
 - Electric bolt
- 2 All rebate strips and/or frame stops should be fitted before starting.
- 3 A 2 amp Power Supply should be provided to ensure there is a Full 1 amp for the bolt. This should allow for a basic Access System and a back up battery to be connected to the same source.

WARNING - THE CONNECTION OF AN INCORRECT VOLTAGE MAY RESULT IN DAMAGE NOT COVERED BY THE PRODUCT WARRANTY.

- 4 The selection of appropriate power supply cable is very important to ensure lock receives sufficient power to operate.

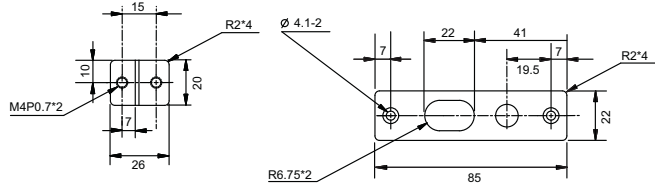
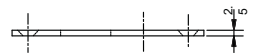
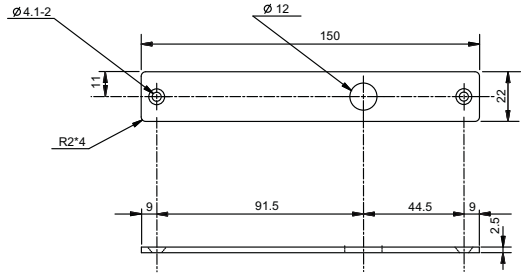
alpro® *First Choice for Locking Solutions*

T 01202 676262 **F** 01202 680101 **E** alpro@iecltd.co.uk **W** www.alpro.co.uk

Electric Mini Bolt

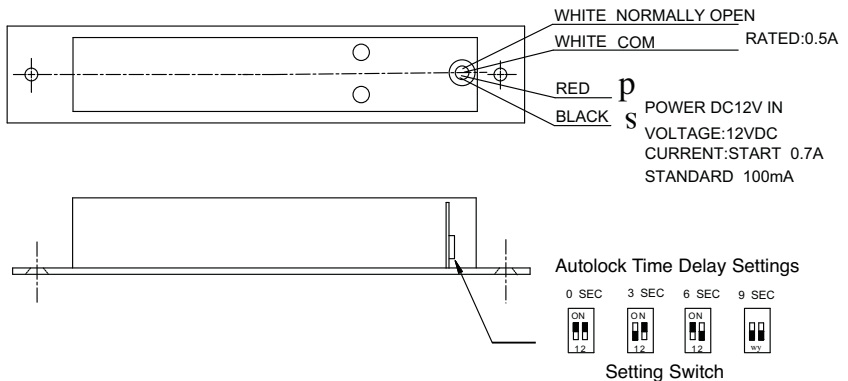
EB501-22 - Instructions

- 5** Connect flying leads (+) Red (-) Black. Note - other leads for connection of LED via plug in lead ***NOT FOR POWER INPUT*.**
- 6** This product has been designed for use in weather protected areas and under normal circumstances does not require any maintenance. **DO NOT OIL OR LUBRICATE.**
- 7** This product must be used in conjunction with a quality floor spring or door closer to ensure positive realignment on closing.



Warranty

This product is guaranteed for a period of 3 years against defects in manufacture, workmanship or materials provided that all electrical and mechanical installation requirements are adhered to as per this instruction sheet. All third party and consequential claims are expressly excluded from this warranty.



IEC Limited Harwell Road Nuffield Estate Poole Dorset BH17 0BD Great Britain

Registered in England 1925537
© July 2007 IEC. All rights reserved.
All dimensions are nominal and subject to tolerances

T 01202 676262
F 01202 680101
E alpro@iecltd.co.uk
W www.alpro.co.uk