

# TECHNICAL DATASHEET

## HEAVY DUTY DOOR HOLDERS



Arguably the single most important fire safety mechanism, electromagnetic door holders guard against the lethal spread of toxic smoke and fumes - by far the greatest cause of death in fires.

The Vimpe EN 1155 approved heavy duty range of door holders offers the installer a choice of mounting styles and holding power.

Mounted onto a fixed surface, these door holders ensure retention of the fire door by means of a smart metallic keeper plate. Interfaced with the fire alarm system, the door holders are deenergised as soon as the fire is detected thus releasing the door without the potentially harmful delay suffered by other types of devices.

### FEATURES

- Two versions available: wall mounted and floor mounted
- Heavy duty casting is vandal resistant
- Two holding forces available - 200N and 500N
- Designed for where accidental damage or vandalism is a problem
- Ideal for areas such as schools, hospitals, warehouses, car parks
- Approved to EN 1155 and CE marked

### PART NUMBERS - SPARES & ACCESSORIES

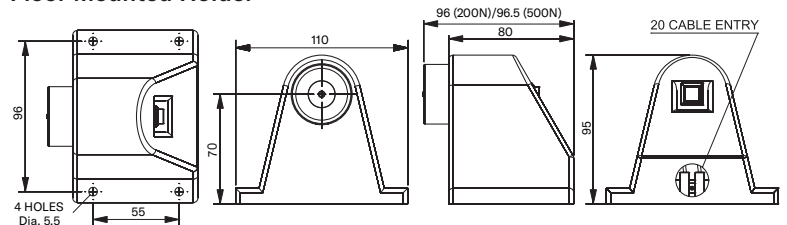
- DH/KP/STND: Keeper Plate, Floor Mounted 200N
- DH/KP/LP/500: Keeper Plate, Floor Mounted 500N
- DR/KP: Keeper Plate, Wall Mounted



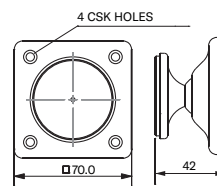
### INSTALLATION

Dimensions (mm)

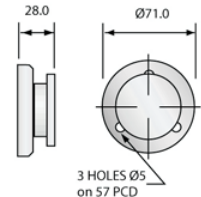
#### Floor Mounted Holder



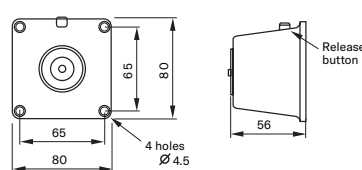
#### Keeper Plate - Floor Mounted 200N



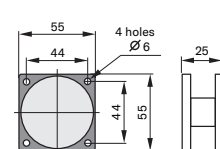
#### Keeper Plate - Floor Mounted 500N



#### Wall Mounted Holder



#### Keeper Plate - Wall Mounted



### SPECIFICATION

Part Number:	Description	Rated Voltage	Nominal Current	Holding Force	Temperature Range	IP Rating	Door Closure Power Size	Weight
DH/HD/FM/200:	Floor Mount DC	24 V dc	45 mA	200 N	0 to 30°C	N/A	3 to 6	700g
DH/HD/FM/500:	Floor Mount DC	24 V dc	90 mA	500 N	0 to 30°C	N/A	3 to 6	1000g
DH/HD/WM:	Wall Mount DC	24 V dc	45 mA	400 N	0 to 30°C	N/A	3 to 6	550g

### DS/HDDH-TD/ISS 2

We reserve the right to change or amend any design or specification in line with our policy of continuing development and improvement.

### Vimpe LTD

Star Lane, Great Waking,  
Essex SS3 0PJ, UK  
t. +44 (0) 1702 216999  
e. sales@vimpe.co.uk  
[www.vimpe.co.uk](http://www.vimpe.co.uk)

### Vimpe Interguard AB

t. +46 (0) 36 37 10 65  
e. sales@vimpe.se

