



# CDVI

Security to Access



## 2EASY



## CDV-91IP

**2EASY IP, 1-Button Video Door Station**



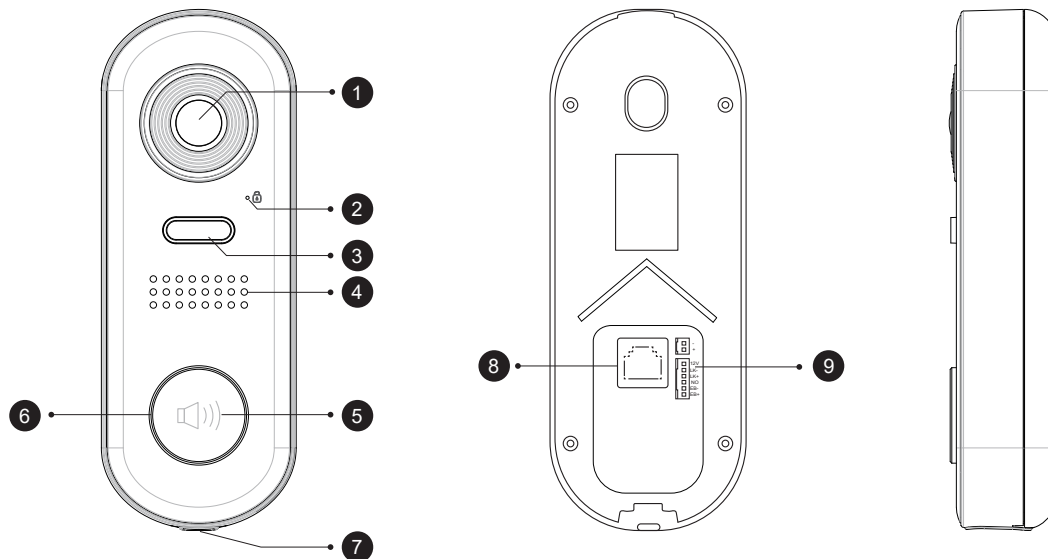
EN

## 1] CONTENTS

---

<b>Title</b>	<b>Page</b>
2] Parts and Functions	3
3] Installation	3
4] System Wiring and Connections	4
5] Electric Lock Connections	5
6] Door Station Operations	6
7] Specifications	7
8] Precautions	7

## 2] PARTS AND FUNCTIONS



### 1 Camera Lens

### 4 Speaker

### 7 Microphone

### 2 LED\_LOCK

Indicates unlock status.

### 5 Call button

Press to call the indoor monitor (resident).

### 8 LAN connector

Use to connect the door station to the network.

### 3 LED\_CAM

Indicates monitoring status.

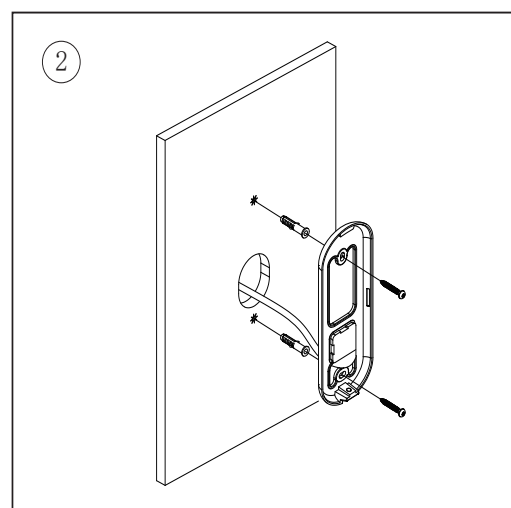
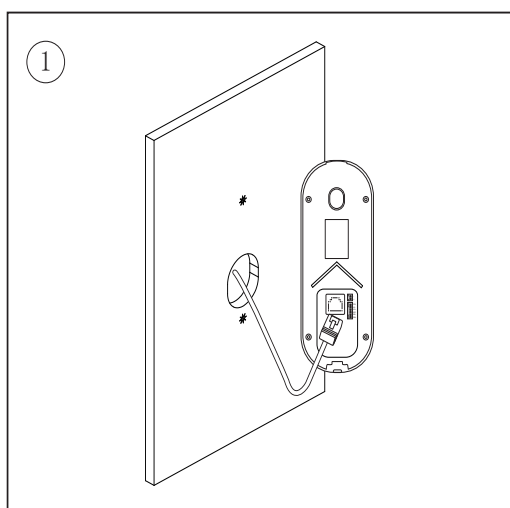
### 6 LED\_KEY

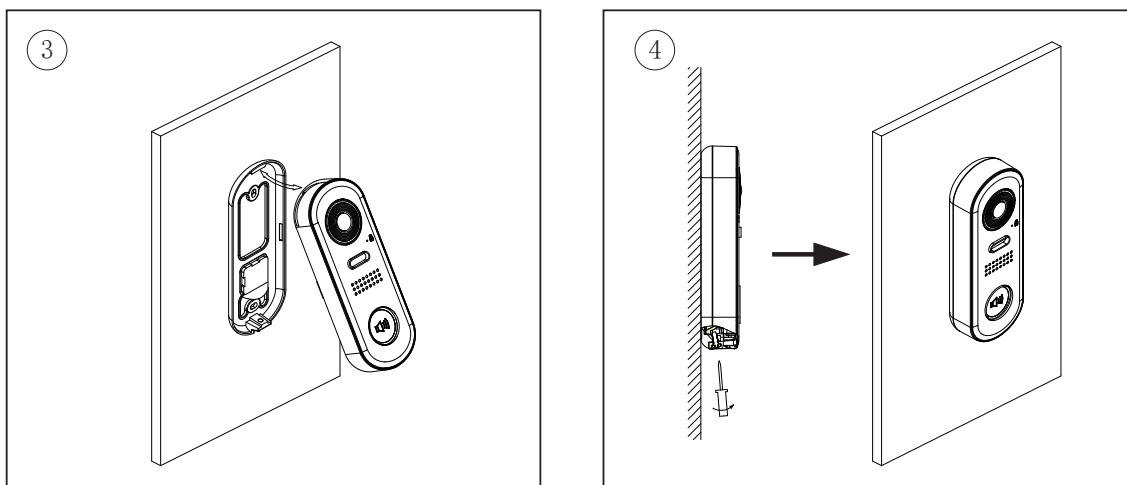
Indicates monitoring, calling, and unlock status.

### 9 Terminal connector

Use to connect external devices to the door station

## 3] INSTALLATION

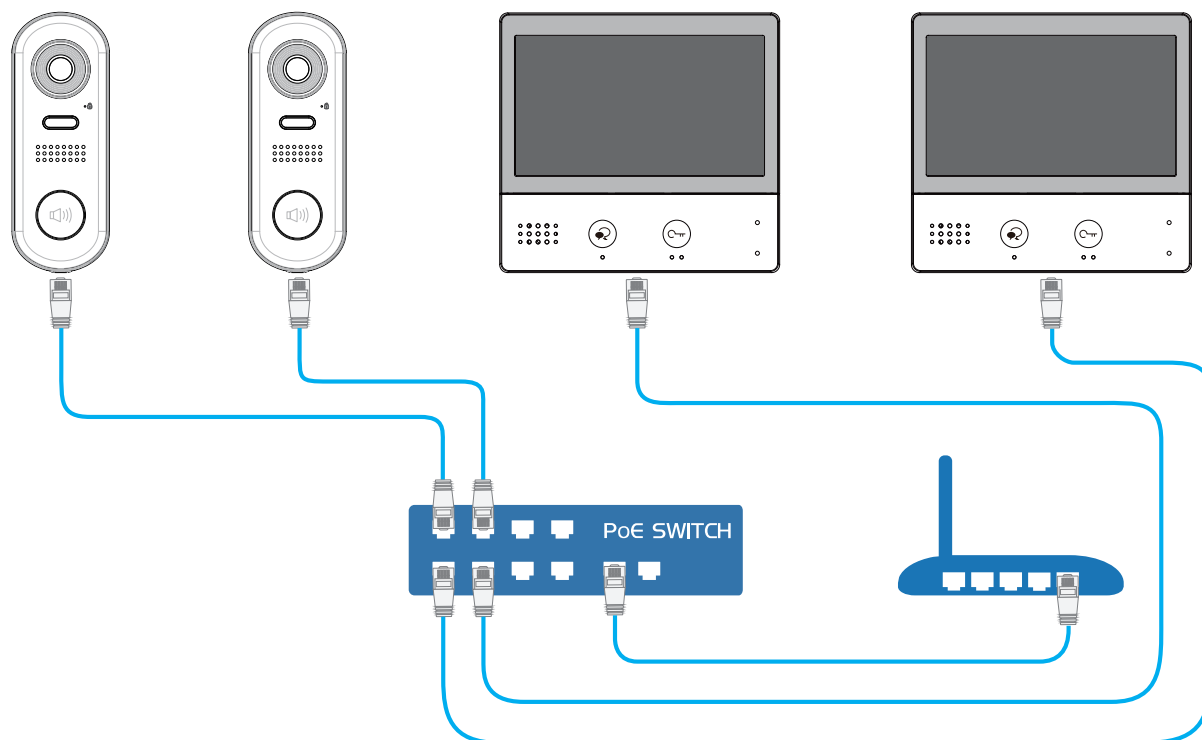




1. Recommended installation height for door stations is 145-160cm.
2. Use screws to fix the back panel to the wall after connecting the cable.
3. Attach the front panel to the back panel, then use a screw to fix it.

## 4] SYSTEM WIRING AND CONNECTIONS

### Single family wiring

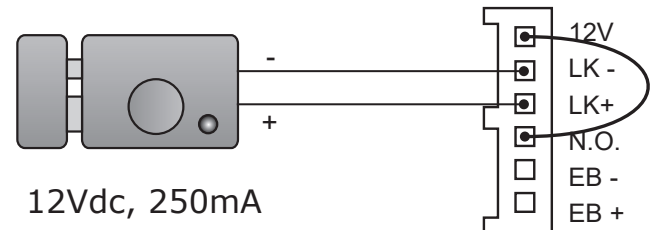


## 5] ELECTRIC LOCK CONNECTIONS

### Door lock controlled with internal power

#### Notes:

1. This mode only supports strike type locks.
2. Fail safe electromagnetic locks (power off to unlock) should be used.
3. The door lock is limited to 12V, and holding current must be less than 250mA.
4. The **Unlock Mode** monitor setting must be set to 1 (by default).

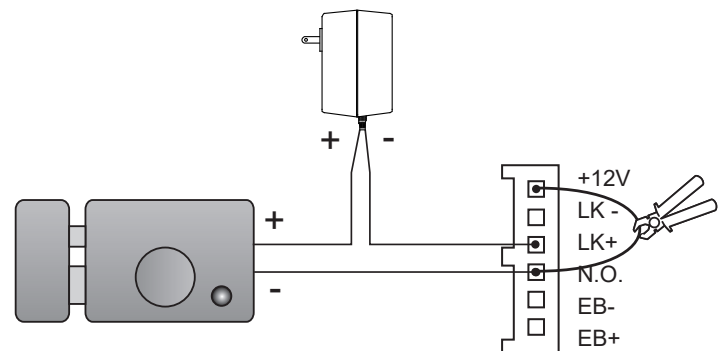


Set to **Normally Open** on the Unlock Relay mode

### Door lock controlled with dry contact

#### Notes:

1. The correct external power supply must be used for the lock.
2. The internal relay contact is restricted to AC or DC 24V/1A.
3. Set up the monitor **Unlock Mode** for different lock types.
  - **Fail Secure** (power on to unlock)  
Unlock Mode = 0 (by default)
  - **Fail Safe** (power off to unlock)  
Unlock Mode=1



Set to Normally Open on the Unlock Relay mode

## 6] DOOR STATION OPERATIONS

### Call button linked in Villa mode

Connect all the devices and power them on.

On the indoor monitor (CDV-471IP):

1. From the main menu, tap the **Setting** icon.
2. Select **Ext.Unit**, and then tap **Auto Setup Wizard**.

The door station will be renamed and the call button will be linked to this monitor.

### Call button linked in Apartment mode

Connect all the devices and power them on.

On the indoor monitor (CDV-471IP):

1. From the main menu, tap the **Setting** icon.
2. Select **Ext.Unit**, and then tap **Enter OS binding**.

On the door station:

1. Power on the door station.
2. Press and hold the **Call Button** for 10s. **LED\_CAM** will flash once in the 5th second, and then again in the 10th second.
3. This indicates that the link has been successful.

### Calling a resident

Press the **Call Button** to call.

### Status check

Press and hold the **Call Button** for 5s.  
**LED\_CAM** will flash once.

	LED_LOCK	LED_KEY
SIP registered OK	Fast flashing	
SIP registered error	Normal flashing	
SIP disabled/Not connected	Off	
My Master IM found		Fast flashing
Other IX devices online, but Master offline		Normal flashing
No other IX device detected		Off

## 7] SPECIFICATIONS

---

Feature	Description
Power Source	PoE (IEEE 802.3af Class 0)
LAN Interface	10 BASE-T / 100 BASE-TX Ethernet (RJ-45)
Camera	Type 1/3.7" Ultra Sense, ISP with 77dB WDR
Lens Angle	170-degree with Fisheye correction
Minimum Illumination	5 lux
Wire Type	Cat-5e or Cat-6
Wiring Distance	100m (Approx. 330")
Operating Temperature	-10°C to 50°C
Protection	IP65
Dimension	160(H)×60(W)×31.5(D)mm

## 8] PRECAUTIONS

---

1. Clean the product with a soft cotton cloth. Do not use organic or chemical cleaning agents. If necessary, use a little pure water or diluted soapy water to clean the dust.
2. The unit is weather resistant. However, do not spray high pressure water directly onto the unit. Excessive moisture may cause problems with the unit.
3. Use the right adaptor supplied or approved by the manufacturer.
4. Pay attention to the high voltage inside the products. Please refer service only to a trained and qualified professional.





## **CDVI Group**

FRANCE (Headquarters)

Phone: +33 (0) 1 48 91 01 02

.....

## **CDVI FRANCE + EXPORT**

+33 (0) 1 48 91 01 02

[www.cdvi.com](http://www.cdvi.com)

## **CDVI AMERICAS [CANADA - USA]**

+1 (450) 682 7945

[www.cdvi.ca](http://www.cdvi.ca)

## **CDVI BENELUX [BELGIUM - NETHERLANDS - LUXEMBOURG]**

+32 (0) 56 73 93 00

[www.cdviBenelux.com](http://www.cdviBenelux.com)

## **CDVI GERMANY**

+49 (0) 175 2932 901

[www.cdvi.de](http://www.cdvi.de)

## **CDVI TAIWAN**

+886 (0) 42471 2188

[www.cdviChina.cn](http://www.cdviChina.cn)

## **CDVI SUISSE**

+41 (0) 21 882 18 41

[www.cdvi.ch](http://www.cdvi.ch)

## **CDVI CHINA**

+86 (0) 10 84606132/82

[www.cdviChina.cn](http://www.cdviChina.cn)

## **CDVI IBÉRICA [SPAIN - PORTUGAL]**

+34 (0) 935 390 966

[www.cdviIberica.com](http://www.cdviIberica.com)

## **CDVI ITALIA**

+39 (0) 321 90 573

[www.cdvi.it](http://www.cdvi.it)

## **CDVI MAROC**

+212 (0) 5 22 48 09 40

[www.cdvi.ma](http://www.cdvi.ma)

## **CDVI SWEDEN [SWEDEN - DENMARK - NORWAY - FINLAND]**

+46 (0) 31 760 19 30

[www.cdvi.se](http://www.cdvi.se)

## **CDVI UK [UNITED KINGDOM - IRELAND]**

+44 (0) 1628 531300

[www.cdvi.co.uk](http://www.cdvi.co.uk)

## **CDVI POLSKA**

+48 (0) 12 659 23 44

[www.cdvi.com.pl](http://www.cdvi.com.pl)

*All the information contained within this document (pictures, drawings, features, specifications and dimensions) could be perceptibly different and can be changed without prior notice. - Jul 2021*