

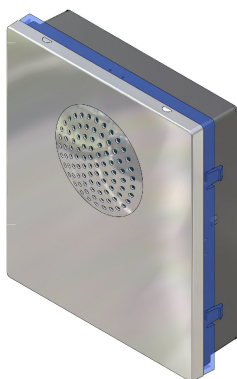


4000 SERIES MODULAR SYSTEM.

KEY FEATURES:-

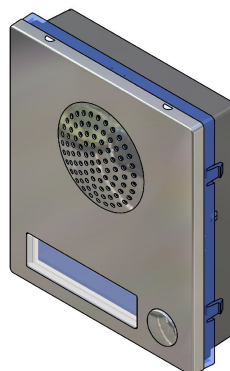
- ✓ **Tactile feel micro-switch push buttons.**
- ✓ **Attractive blue illuminated name plates on functional panels and blue back lit illuminated display on digital panels.**
- ✓ **Torx pin vandal resistant security screws to attach the face unit to the back box.**
- ✓ **Name plate information is easily changed without the need to remove the door panel from the wall using supplied tool.**
- ✓ **Torx pin/terminal screw driver supplied with each back box.**
- ✓ **Hinged back boxes to allow engineers to have both hands free whilst terminating connections and making adjustments (See page 8 for example).**
- ✓ **Modules are available in both mirror finish stainless steel (Standard) or mat finish aluminium (/A).**
- ✓ **Back boxes are available in gun metal grey (Standard), chrome (/C) and gold (/G) finish.**
- ✓ **Low profile surface back boxes are only 38mm deep**
- ✓ **Larger range of modules than are available for the 800 Series**
- ✓ **Modules simply clip into surface & flush frames. Once fitted they are very secure and can only be removed from the inside of the panel.**

AVAILABLE MODULES:-



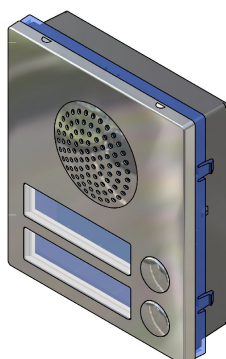
Art4837-0

- ✓ Equivalent to the Art.837M-0.
- ✓ 3+1 system for use with 3011, 3111, 3112 phones etc.



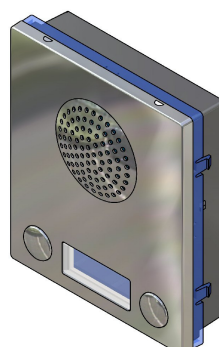
Art4837-1

- ✓ Equivalent to the Art.837M-1.
- ✓ 3+1 system for use with 3011, 3111, 3112 phones etc.



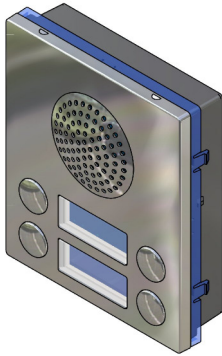
Art4837-2

- ✓ Equivalent to the Art.837M-2.
- ✓ 3+1 system for use with 3011, 3111, 3112 phones etc.

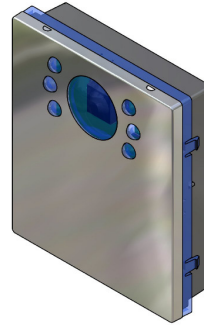


Art4837-1D

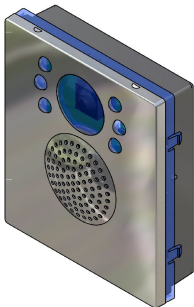
- ✓ Double button module.
- ✓ 2 button
- ✓ Name plate is shared for both buttons
- ✓ 3+1 system for use with 3011, 3111, 3112 phones etc.

**Art4837-2D**

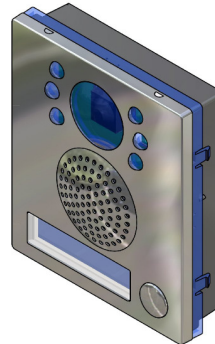
- ✓ Double button module.
- ✓ 3+1 system for use with 3011, 3111, 3112 phones etc.

**Art4830**

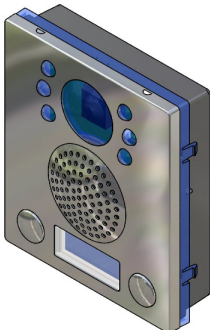
- ✓ Equivalent to the 830 and the 830NC.
- ✓ Jumper settings on the camera unit to select for coax or non coax systems.
- ✓ Add /C for colour camera.
- ✓ Camera has a 10° horizontal/vertical manual adjustment.
- ✓ Mono cameras have IR illumination, colour have white LED.

**Art4832-0**

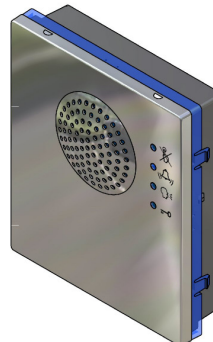
- ✓ A 4837 amplifier and camera in one module.
- ✓ Jumper settings on the camera unit to select for coax or non coax systems.
- ✓ Add /C for colour camera.
- ✓ Camera has a 10° horizontal/vertical manual adjustment.
- ✓ Mono cameras have IR illumination, colour have white LED.

**Art4832-1**

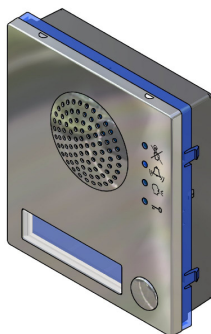
- ✓ A 4837-1 amplifier and camera in one module.
- ✓ Jumper settings on the camera unit to select for coax or non coax systems.
- ✓ Add /C for colour camera.
- ✓ Camera has a 10° horizontal/vertical manual adjustment.
- ✓ Mono cameras have IR illumination, colour have white LED.

**Art4832-1D**

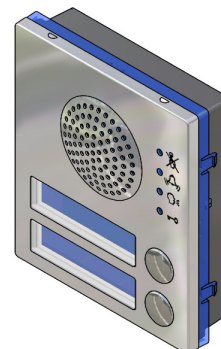
- ✓ A 4837-1D amplifier and camera in one module.
- ✓ Jumper settings on the camera unit to select for coax or non coax systems.
- ✓ Add /C for colour camera.
- ✓ Camera has a 10° horizontal/vertical manual adjustment.
- ✓ Mono cameras have IR illumination, colour have white LED.

**Art4838-0**

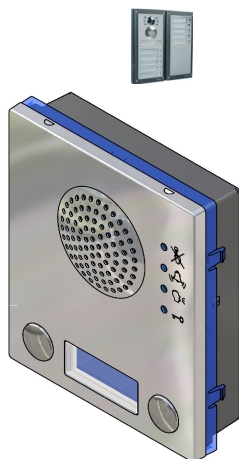
- ✓ A new module that incorporates all the features of a sentry system inside a module without the need for a control cabinet.
- ✓ Also includes DDA friendly features such as LED's.
- ✓ See below for more info on the 4838 system.

**Art4838-1**

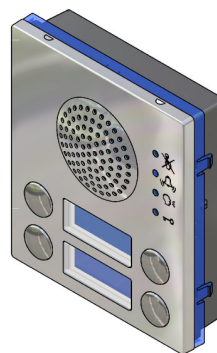
- ✓ A new module that incorporates all the features of a sentry system inside a module without the need for a control cabinet.
- ✓ Also includes DDA friendly features such as LED's.
- ✓ See below for more info on the 4838 system.

**Art4838-2**

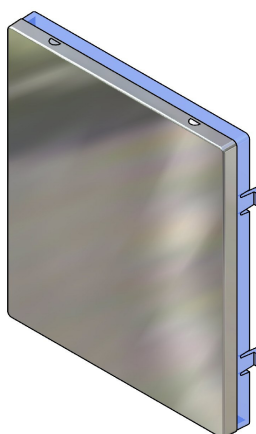
- ✓ A new module that incorporates all the features of a sentry system inside a module without the need for a control cabinet.
- ✓ Also includes DDA friendly features such as LED's.
- ✓ See below for more info on the 4838 system.

**Art4838-1D**

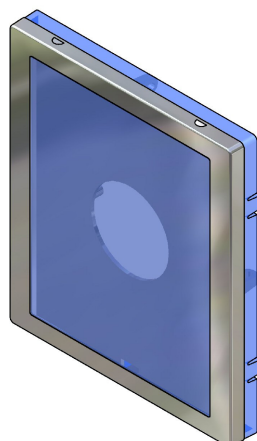
- ✓ A new module that incorporates all the features of a sentry system inside a module without the need for a control cabinet.
- ✓ Also includes DDA friendly features such as LED's.
- ✓ See below for more info on the 4838 system.

**Art4838-2D**

- ✓ A new module that incorporates all the features of a sentry system inside a module without the need for a control cabinet.
- ✓ Also includes DDA friendly features such as LED's.
- ✓ See below for more info on the 4838 system.

**Art4840**

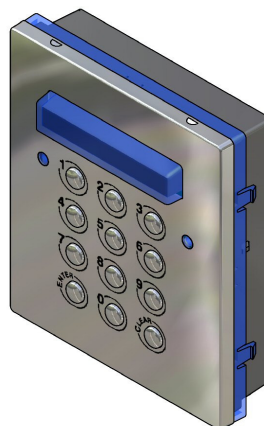
- ✓ Blanking module

**Art4846**

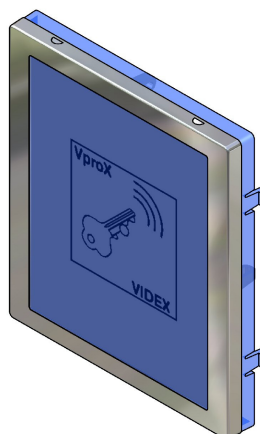
- ✓ Back lit illuminated information module

**Art4800**

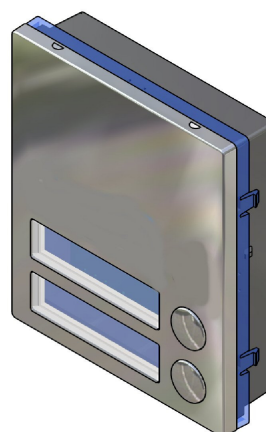
- ✓ Codelock module
- ✓ 3 codes 4-8 digits in length.
- ✓ 3 dry contact relays (24Vac/dc 3A)
- ✓ 2 push to exit inputs to activate relays 1 & 2
- ✓ 12-24V ac/dc operation
- ✓ Down lit illumination for keypad.

**Art4900**

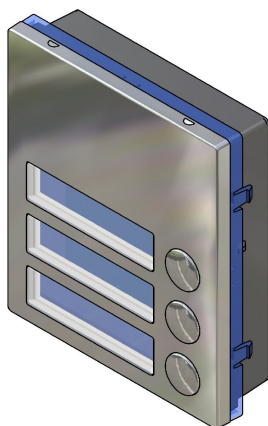
- ✓ Codelock module
- ✓ 100 codes 4-8 digits in length.
- ✓ 3 dry contact relays (24Vac/dc 3A)
- ✓ 2 push to exit inputs to activate relays 1 & 2
- ✓ 12-24V ac/dc operation
- ✓ Down lit illumination for keypad

**Art4849**

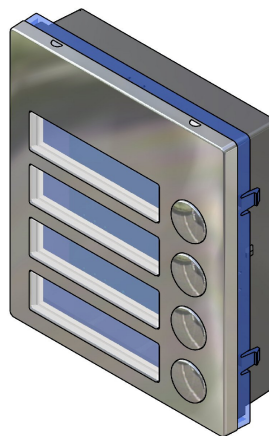
- ✓ Vprox proximity module
- ✓ Tri colour LED
- ✓ Internal audible indicator

**Art4842**

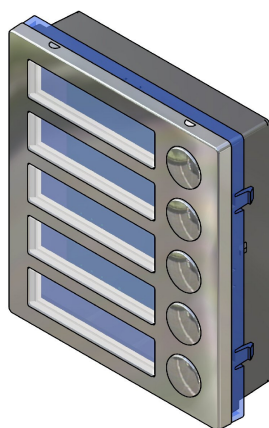
- ✓ 2 button expansion module
- ✓ Jumpers are available on the rear of the module to isolate or common the push buttons.

**Art4843**

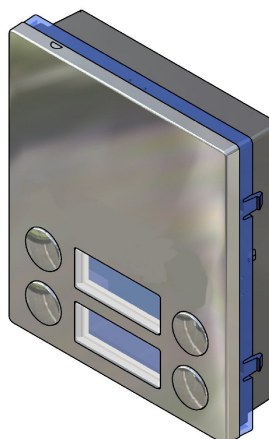
- ✓ 3 button expansion module
- ✓ Jumpers are available on the rear of the module to isolate or common the push buttons.

**Art4844**

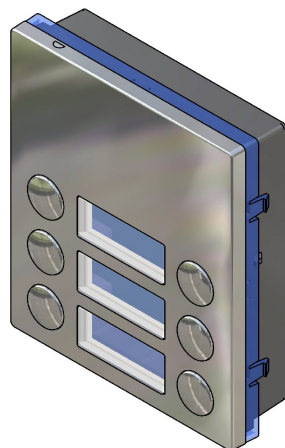
- ✓ 4 button expansion module
- ✓ Jumpers are available on the rear of the module to isolate or common the push buttons.

**Art4845**

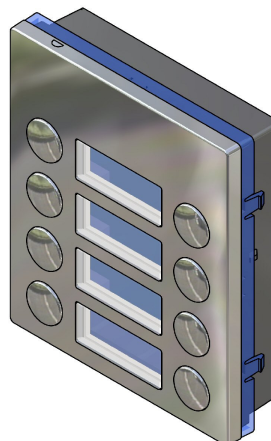
- ✓ 5 button expansion module
- ✓ Jumpers are available on the rear of the module to isolate or common the push buttons.

**Art4842D**

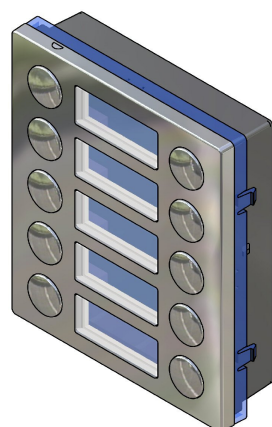
- ✓ 4 button expansion module
- ✓ Double row buttons share a name plate window.
- ✓ Jumpers are available on the rear of the module to isolate or common the push buttons.

**Art4843D**

- ✓ 6 button expansion module.
- ✓ Double row buttons share a name plate window.
- ✓ Jumpers are available on the rear of the module to isolate or common the push buttons.

**Art4844D**

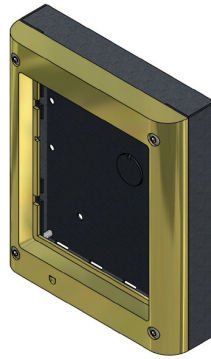
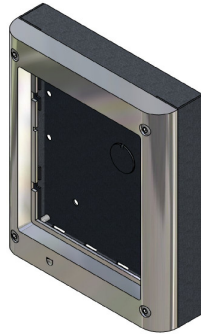
- ✓ 8 button expansion module
- ✓ Double row buttons share a name plate window.
- ✓ Jumpers are available on the rear of the module to isolate or common the push buttons.

**Art4845D**

- ✓ 10 button expansion module.
- ✓ Double row buttons share a name plate window.
- ✓ Jumpers are available on the rear of the module to isolate or common the push buttons.



SURFACE BACK BOXES:-

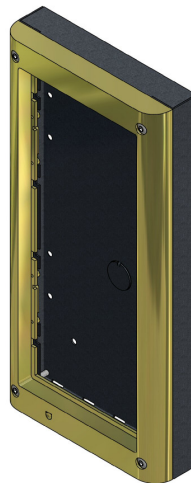


Art4881, /C, /G

Single module surface frame.

Dimensions:

135mm(W) x 160(H)mm x 43(D)mm

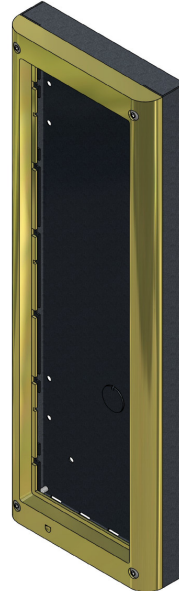
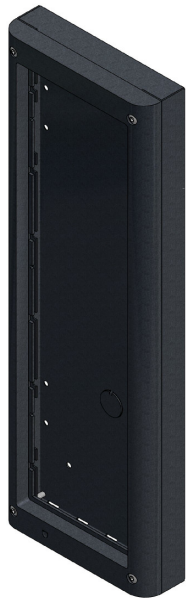


Art4882, /C, /G

Two module surface frame.

Dimensions:

135mm(W) x 280(H)mm x 43(D)mm

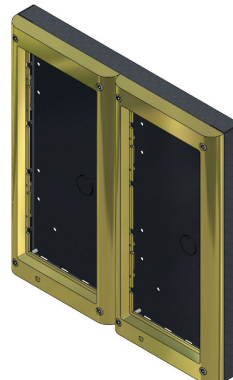
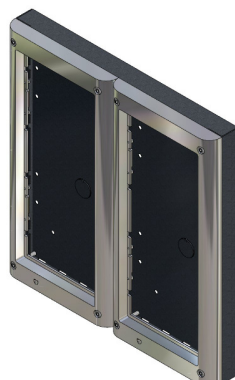


Art4883, /C, /G

Three module surface frame.

Dimensions:

135mm(W) x 400(H)mm x 43(D)mm



Art4884, /C, /G

Four module surface frame.

Dimensions:

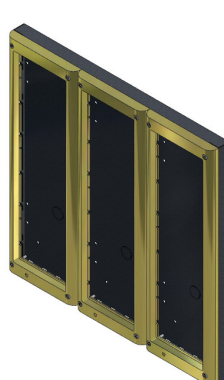
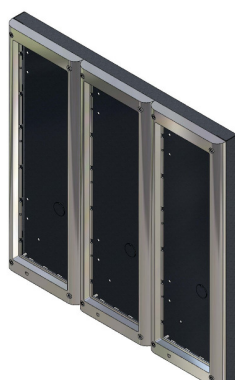
270mm(W) x 280(H)mm x 43(D)mm



Art4886, /C, /G

Six module surface frame.

Dimensions:
270mm(W) x 400(H)mm x 43(D)mm

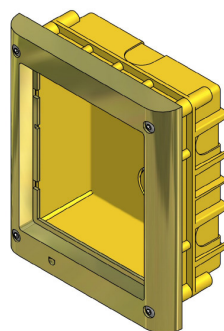
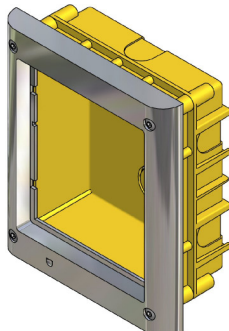
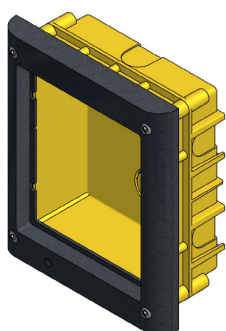


Art4889, /C, /G

Nine module surface frame.

Dimensions:
405mm(W) x 400(H)mm x 43(D)mm

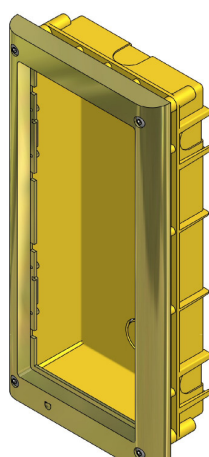
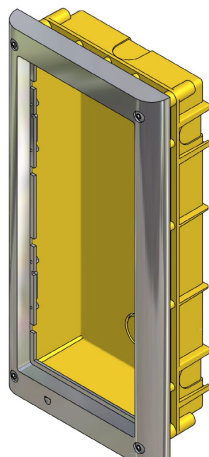
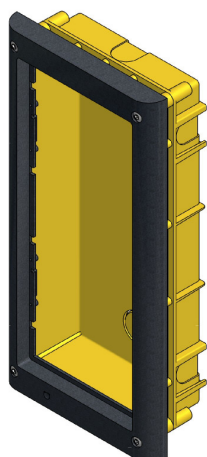
FLUSH BACK BOXES:-



Art4851, /C, /G

Single module flush frame.

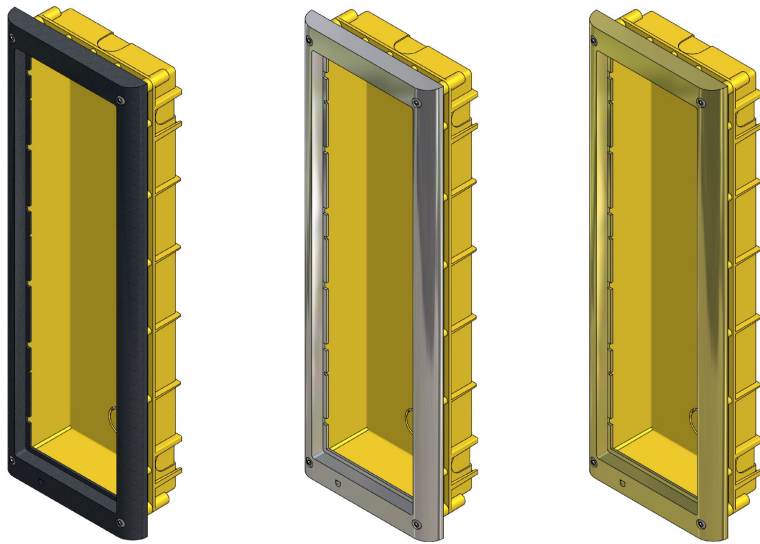
Front Dimensions:
135mm(W) x 160(H)mm x 60(D)mm
Back box:
120mm(W) x 143mm(H) x 45mm(D)



Art4852, /C, /G

Two module flush frame.

Front Dimensions:
135mm(W) x 280(H)mm x 60(D)mm
Back box:
120mm(W) x 263mm(H) x 45mm(D)



Art4853, /C, /G

Three module flush frame.

Front Dimensions:

135mm(W) x 400(H)mm x 60(D)mm

Back box:

120mm(W) x 383mm(H) x 45mm(D)

NOTE: LINK THE 2 & 3 MODULES TOGETHER TO MAKE LARGER FRAMES

ART4838 SYSTEM

The Art.4838 amplifier is a new addition which benefits from the following additional standard features over the Art4837 range of amplifiers:-

- ✓ Calling, Speak, Door open and Busy LED's to indicate status of call.
- ✓ Dry contact change over relay for lock output.
- ✓ 12Vdc operation allowing battery back up facilities.
- ✓ Push to exit input.
- ✓ Local door bell facility.
- ✓ A choice of up to 4 call tones (Allows four doors to have unique call tones to the apartments so that the tenant can identify the origin of the call).
- ✓ Programmable number of rings, speech time and door open time.
- ✓ Eliminates the need for 502 switchers on multiple audio door systems.
- ✓ Eliminates the need for 890 controller and 892 switches on video systems.

The following system variations are possible:-

✓ **Basic audio**

- Using the standard range of telephones such as the 3011, 3111, 3112 a single or multiple door system can be made without the need for 502 switchers.
- A 520, 521 or equivalent 12Vdc PSU should be used for each door panel.
- This system will not have privacy of speech.
- Local door bells can be used to give an alternative ring from the local door.

✓ **Audio (Sentry style)**

- Uses the Sentry range of telephones (3121, 3122, 3126 etc)
- Full privacy of speech.
- No need for control cabinets.
- Can be powered by either 520M, 521 or any 12Vdc PSU. (One required per door.
- This system will not support local door bells.



- Multiple doors do not need any switching relays.

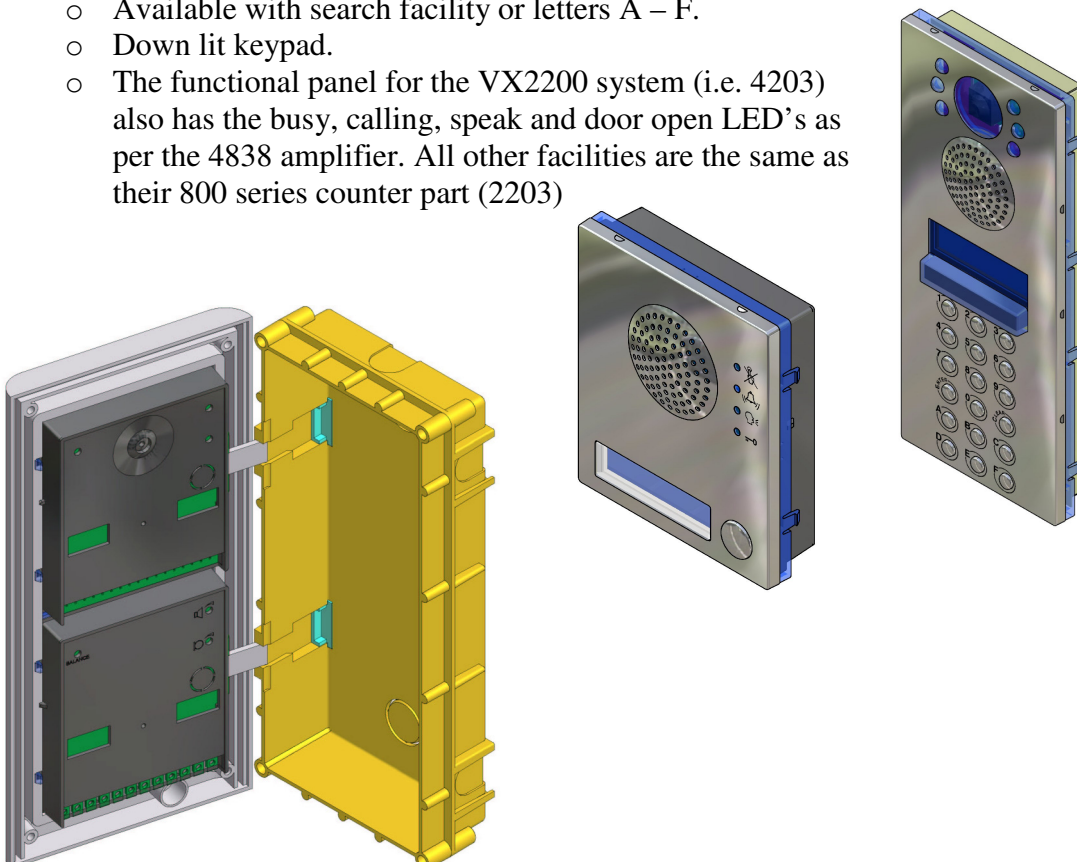
✓ VIDEO

- Can be coax or non-coax.
- Only requires one 893N1 for both single entrance and multiple entrance systems.
- Requires either a 520M, 521 or equivalent 12Vdc power supply per door.
- Only requires a 506 relay per door on multiple door systems to switch the video as oppose to an 892. (On two door systems only one 506 required).
- Uses the standard videophones (3311, 3313)

Please see Art 4838 instructions for more information.

DIGITAL SYSTEMS:-

- Digital door panels are available for the VX2200 system and the VX2000 system. All functions are the same as their 800 series counterpart.
- The audio module and the video module are now the same size (Two modules high).
- Available with search facility or letters A – F.
- Down lit keypad.
- The functional panel for the VX2200 system (i.e. 4203) also has the busy, calling, speak and door open LED's as per the 4838 amplifier. All other facilities are the same as their 800 series counter part (2203)



Example of hinge

NOTE: PLEASE USE PRODUCT BUILDER TO LEARN HOW SYSTEMS GO TOGETHER WHEN USING THE NEW 4000 SERIES MODULES