

Technical Support**01273 811011****support@paxton.co.uk**

Technical help is available: Monday - Friday from 07:00 - 19:00 (GMT)
Saturday from 09:00 - 13:00 (GMT)

Documentation on all Paxton products can be found on our website - <http://www.paxton.co.uk/>

Suitability

Security-sensitive doors



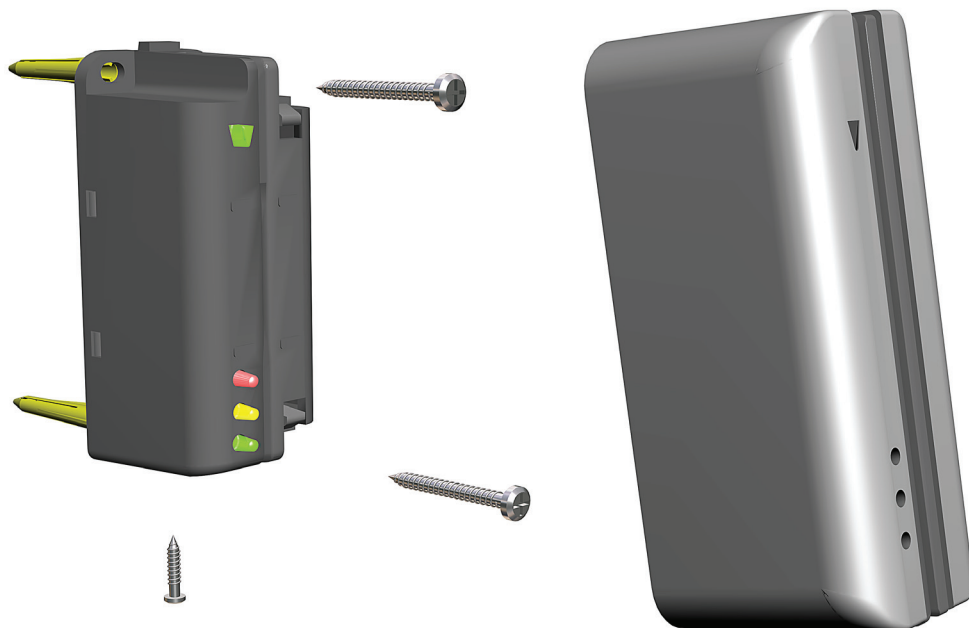
Mounted on metal surface



Wet environments



Readers mounted together

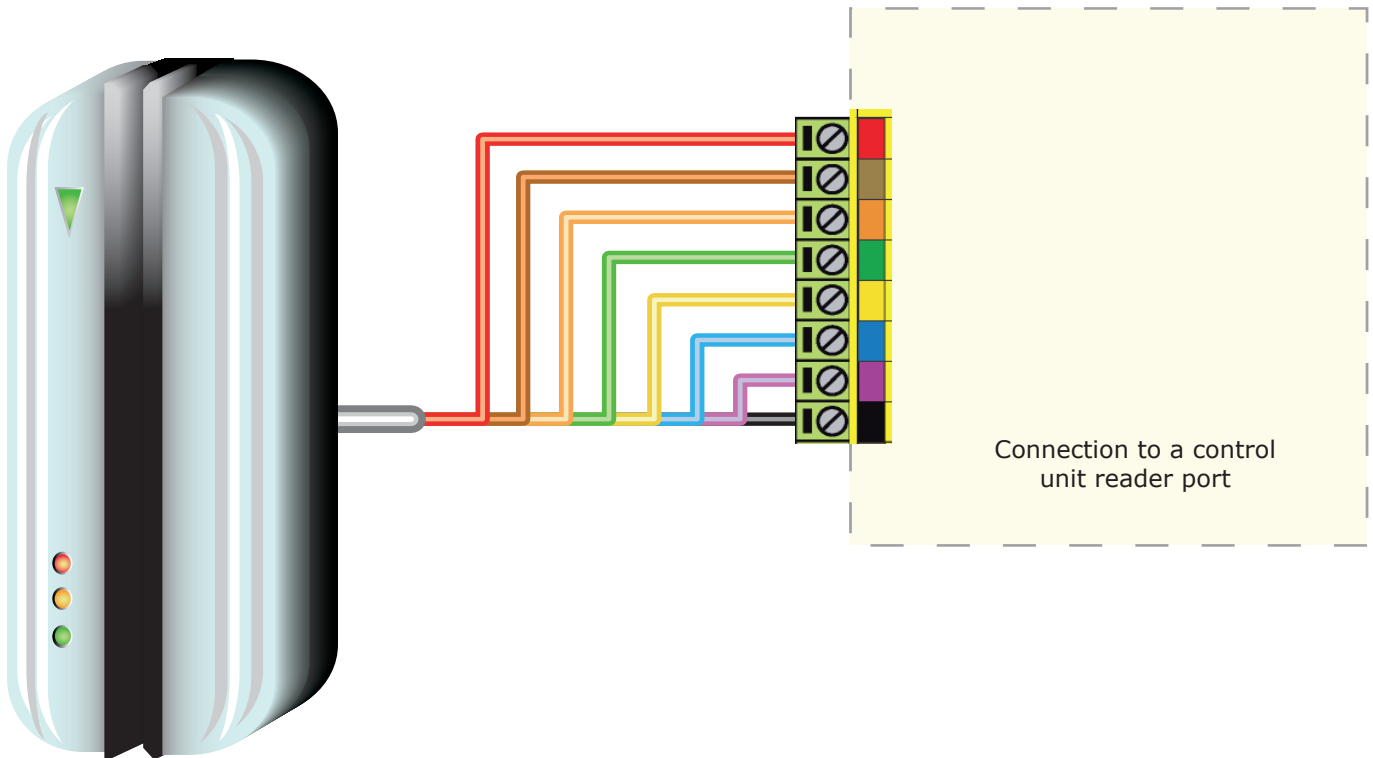
**Fitting****Reader covers**

A black plastic or satin chrome cover comes supplied with the reader.

Cable extensions

Readers can be extended using Belden CR9540 10-core overall screened cable to a maximum of 100 metres.

Wiring



WHITE labelled control units provide 5V at the Red terminal. The Red power wire for the reader should therefore be directly connected to the 12V supply terminal.

Connection modules

Reader junction box (325-020)

This module can be used to provide a connection point for the reader RJ45 plug. The terminals on the module are then wired colour for colour to the controller.

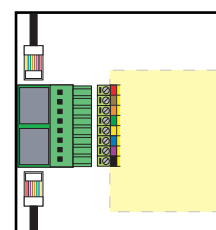
Alternatively, the reader can be wired directly into the screw terminals of the control unit by first cutting off the RJ45 plug and stripping back the wires in the cable.



Reader port module (325-030)

This module may be purchased separately to speed up the installation and replacement of readers.

The reader port module is designed to convert the standard reader ports on Switch2 and Net2 controllers to accept one or two RJ45 connections. Pull off the screw terminal block from the reader port and simply replace it with this module.



Technical Help

Here is the list of topics about this product that receive the most technical support enquiries.
We list them here to help you speed up the installation and trouble shooting process.

1 - Readers/Keypads not working.

- Software settings - Confirm that the settings of the reader or keypad are correct.
- Connections - Check the wiring and integrity of the connectors. If possible, test this reader on the other port.
- Cable - Belden 9540 should be used to extend the reader cable (100 m maximum). Twisted pair alarm cable should not be used. To confirm that an extended reader cable is not faulty, wire the reader directly to the port.
- Supply voltage - Confirm that the voltage is within specification. (see table)
- User token - Confirm that the user token used for testing is OK by presenting it to a known working reader.
- Interference - Confirm whether the reader works when tested 'in hand' and not mounted on the wall.
Ensure PROXIMITY readers are not mounted back to back and there is no interference from other RF devices.

2 - Readers / Keypads - Extending cable.

Only Belden CR9538 / 9540 can be used for cable extensions. CR9538 8 core up to 25 m, CR9540 10 core up to 100 m (maximum). With CR9540, the two additional cores should be used to double up the power.

3 - Net2. What to do if a user has no access - Check the reader LED's when a card is shown.

- No LED's - the reader has no power.
- No change in display - try the card on a known working reader. If there is still no response, replace the card.
- Green LED flashing when a card is presented; check relay 1 LED to check for activity and also the lock wiring.
- Red LED is flashing when a card is presented; check the validity of the user at the PC.
Check user's access level and ensure they should have access by clicking on Current Validity.
Check the 'Valid Until' date and confirm this has not expired.
- Reinstate the ACU from the doors screen. Select the ACU's you wish to reinstate and then click OK.

4 - Switch2 - Adding an additional card pack.

You need to be in possession of the original enrolment card. Present the original enrolment card to the reader and the Amber LED will flash, Green & Red LED's will be off, then present the Enrolment card from the new card pack; the reader will beep and all LED's will be lit. The additional cards will now be valid. Repeat this with each reader and with any additional card packs. Any valid enrolment card can be used to add further packs. This is the same for enrolling function card packs onto a system.

5 - Switch2 - How to reset the controller.

1. Disconnect the power and remove the wires from the Green and Mauve terminals.
2. Insert a wire link between the Green and Mauve terminals.
3. Reconnect the power (the unit will beep 4 times).
4. Disconnect the power and remove the link wire, reconnect the Green and Mauve wires.
5. Reconnect the power (the unit will beep 3 times per second). The unit is ready to be enrolled.

Specifications			
Electrical	Min	Max	
Voltage	8V DC	14V DC	
Current	50 mA	90 mA	
Clock and data bit period			600 μ s
Cable length			5 metres
System Specification	Min	Max	
Magnetic stripe coercivity	300 Oe	4000 Oe	
Media speed	125 mm/s	1250 mm/s	
Media acceleration		500 mm/s ²	
Reader head life	1,000,000		Swipes
Environment	Min	Max	
Operating temperature	-20 °C	+ 55 °C	
Waterproof	IPX7		Outdoor Use
Dimensions	Width	Height	Depth
	34 mm	89 mm	34 mm

Contents in box			
CARDLOCK reader			
Satin Chrome cover assembly			
Documentation			
Option		Qty	Description
Fitting Kit	fk1-059	3	Pozi pan self tapping screw - zinc
(Universal)		3	Wall Plugs
		1	Pozi pan self tapping screw - small
		5	Cable clips



The declaration of conformity is available on request. Contact details are provided at: <http://paxton.info/596>

This product is not suitable for retail sale. All warranties are invalid if this product is not installed by a competent person.