

Technical Support **01273 811011****support@paxton.co.uk**

Technical help is available: Monday - Friday from 07:00 - 19:00 (GMT)
Saturday from 09:00 - 13:00 (GMT)

Documentation on all Paxton products can be found on our website - <http://www.paxton.co.uk/>

Suitability

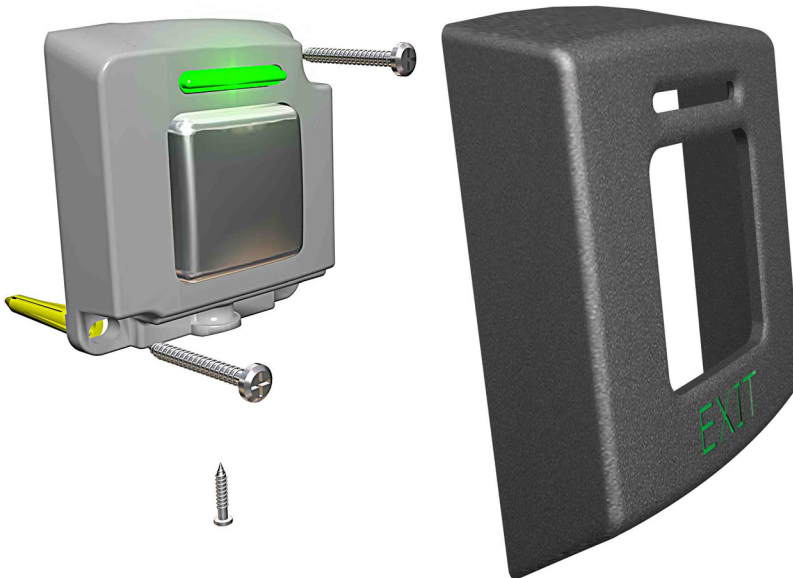
With Net2 and Switch2 ACU's



Wet environments



With compact systems

**Fitting**

The E75 exit button can also be fitted on a standard UK recessed backbox.

Exit button covers

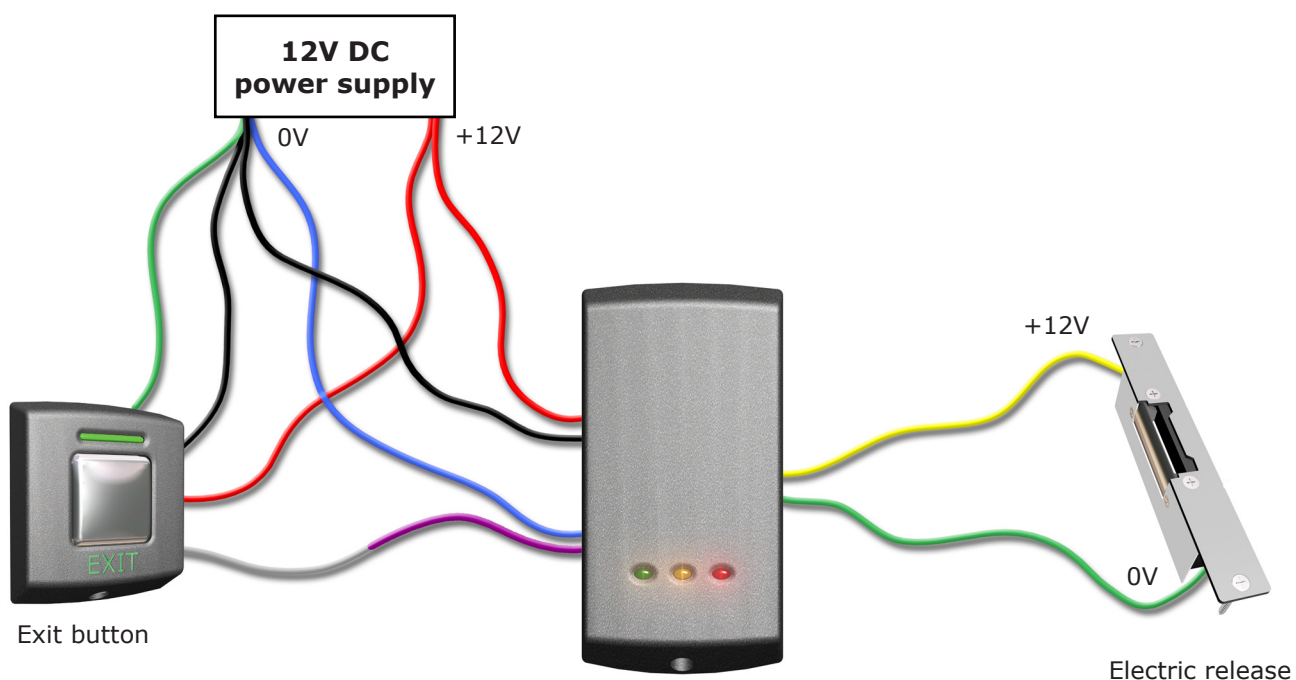
Additional covers are available in black, white, grey, blue and silver. Registered installers can order these free of charge by logging onto the secure installer extranet: <http://paxton.info/1035>. If you are not a registered installer please call us on: **01273 811011** for more information.



Wiring



Wiring to a Compact reader



The green LED on the exit button is illuminated but will not flash when used with compact readers.

E75 Screw connector option



O	+12V DC
O	Exit
O	Green LED
O	0V

Specifications			
Environment	Min	Max	
Operating temperatures - all items	-20 °C	+55 °C	
Waterproof			No
Cable length			5 metres
Electrical			
Voltage	8V DC	14V DC	
Current		70 mA	
Dimensions	Width	Height	Depth
E38	39 mm	48 mm	13 mm
E50	50 mm	58 mm	14 mm
E75	86 mm	94 mm	16 mm



The declaration of conformity is available on request. Contact details are provided at: <http://paxton.info/596>