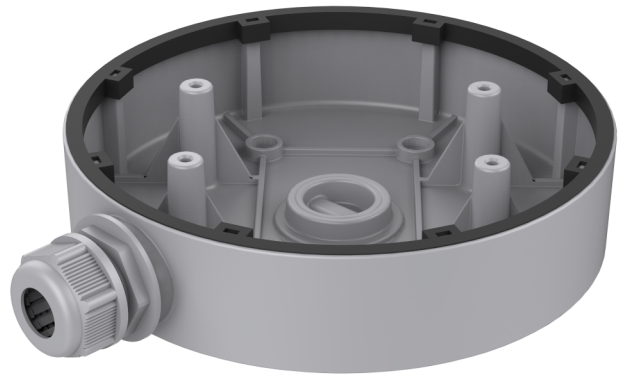


TVD-BB4

TruVision Back Box for S6 and M Series varifocal dome cameras, grey

Overview

The TruVision TVD-BB4 back box can be used to install Series 6 IP cameras TVD-5604H / TVD-5605H / TVD-5606H on a flat surface.



Details

- Cable outlets at side and bottom
- Can be used indoor and outdoor
- Should only be used on a flat surface

TVD-BB4

TruVision Back Box for S6 and M Series varifocal dome cameras, grey

Technical specifications

General

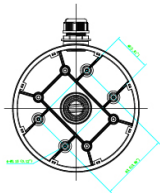
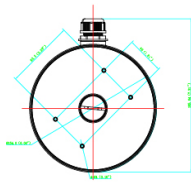
Bracket type	Camera
Support type	TruVision mini domes
Bracket mounting part	Mount connection box
Mount type	Surface mount

Physical

Physical dimensions	Ø 155 x 36 mm
Net weight	300 g
Colour	Grey (Pantone 428c)
Material	Aluminium

Compatibility

Cameras	TVD-5604H / TVD-5605H / TVD-5606H / TVGP-M01-0202-DOM-G / TVGP-M01-0402-DOM-G / TVGP-M01-0802-DOM-G
---------	---



As a company of innovation, Carrier Fire & Security reserves the right to change product specifications without notice. For the latest product specifications, visit firesecurityproducts.com online or contact your sales representative.

Last updated on 27 June 2023 - 15:10