



V-POSTER



MOBILE. VERSATILE. STYLISH



ENERGY
EFFICIENT



LIGHT
WEIGHT



DURABLE



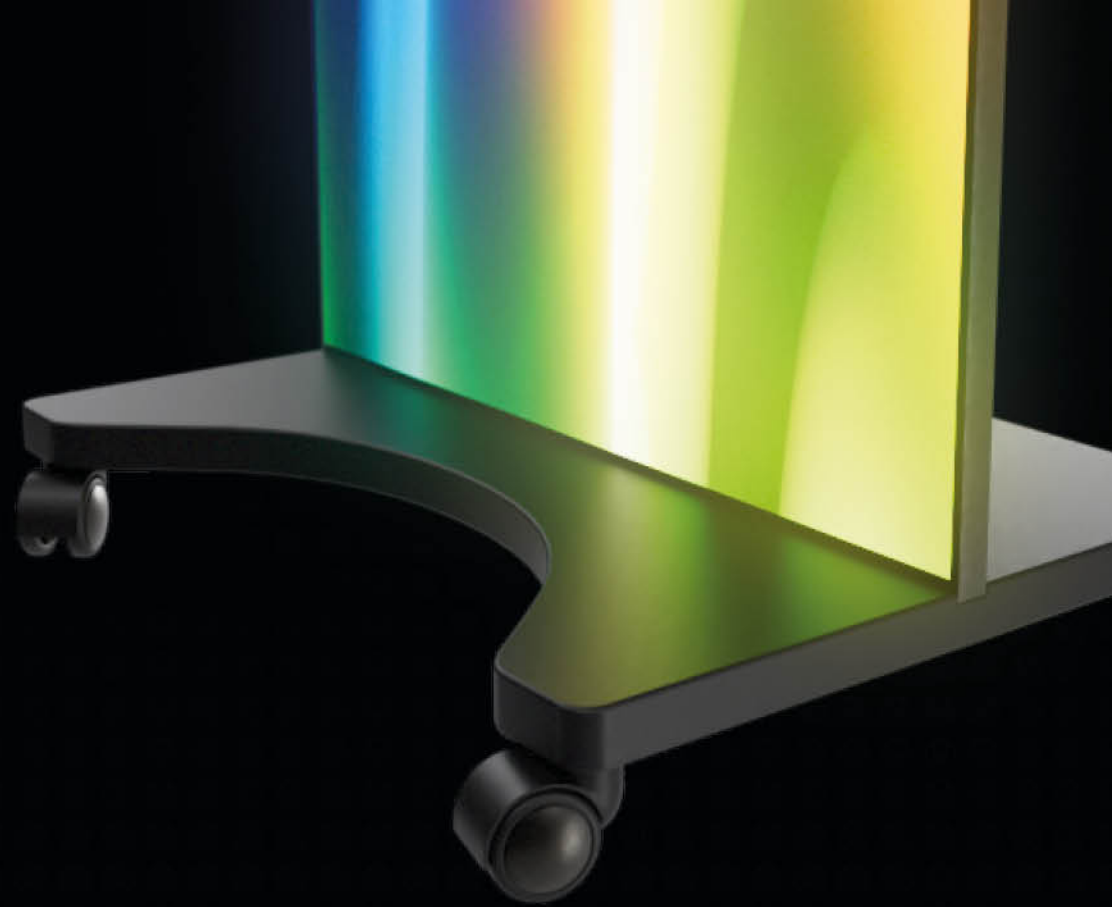
SCALABLE



PIXEL PITCH
P-1.8 & P-2.5

MAXIMIZE ROI WITH MOBILE TECHNOLOGY

Don't tie down your investment with fixed location assets. The V-Poster is the perfect digital signage solution for ever changing spaces with sustainability in mind.



THREE MOUNTING METHODS

Mobile
Wall
Hanging



INTEGRATED SPEAKERS

Integrated speakers make the V-Poster perfect for wayfinding or information points at museums, showrooms or points of sale.



CLOUD & APP MANAGEMENT

Cloud based applications for content management and scheduling.



PLUG & PLAY

Pre-built and configured right out of the box.

GET CREATIVE

SCALE YOUR DISPLAYS
USING THE V-POSTERS
CASCADE MODE



BEZEL FREE

Hinged bezel allows
for seamless
configurations.

*V-Posters must have the same pixel pitch
in order to utilise cascade mode.



EDGE-TO-EDGE

THREE

MOUNTING METHODS



MOBILE



WALL



HANGING

MULTIDEVICE COMPATIBLE



HDMI



RJ45



USB



WIFI



AUDIO

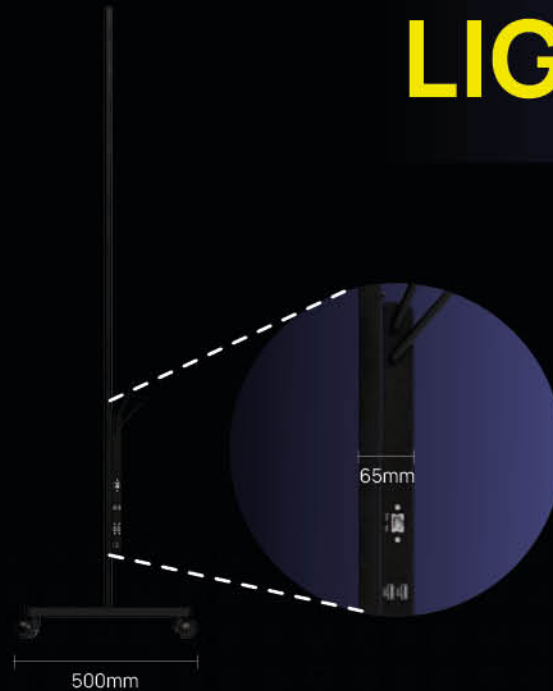
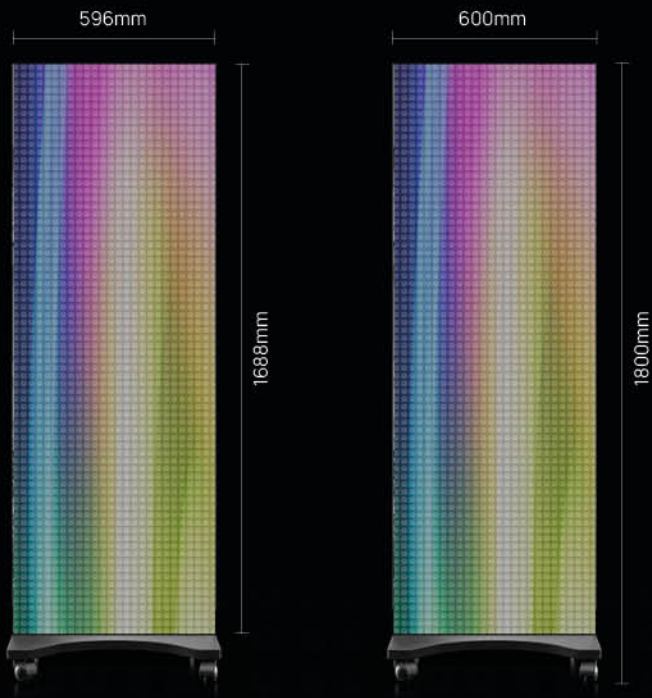


LIGHT &
TEMPERATURE
SENSOR

BUILT TO LAST

GOB This innovative technology seals the LED's with transparent epoxy glue. This protects the LED from any harmful accidents by making it anti-collision, waterproof, anti-UV and dust proof. The lifespan of the LED is also extended due to improved heat dissipation.

A MUST IN HEAVY FOOTFALL AREAS!



LIGHT & COMPACT

Weighing in at only 35kg the V-Poster couldn't be easier to handle or relocate.

*Note: Weight with mobile base = 42kg.



USER INTERACTION: TOUCH COMPATIBLE

With an infrared frame, the V-Poster is touch capable with up to 16 touch points.

*Touch function is an additional option



FAST & EASY SERVICING

The V-Poster can be easily maintained and managed from the front for quick and easy servicing. Module swaps take merely seconds.

Specifications	P-1.8	P-2.5
Pixel Pitch (mm)	1.8	2.5
Resolution	320x900	240x675
External Dimensions (W+D+H) <small>*with attachable base</small>	600x500x1800mm 23.62x90.68x70.86in	
Screen Dimensions (W+H)	596x1688mm 23.46x66.43in	
Weight (kg / lbs)	35 / 77 (Without Base)	
Brightness	50—800cd/m2 Adjustable	
Colour Temperature	2500k—10000k Adjustable	
Viewing Angle (H/V)	140°	
Refresh Rate	≤3840HZ	
Processing	≤16bit	
Voltage (V)	AC90—264VAC, 47—63 HZ	
Power Consumption (Max.)	300—450W	
Power Consumption (Avg.)	150—225W	
Maintenance Mode	Front maintenance	
Operation / Storage temperature (°C / °F)	-20 - +50 / -4 - +122	
Relative Humidity	10%-90%	
Communication Mode	WiFi, 4G	
Display Methods	Synchronous / Asynchronous	

*All data contained is subject to change.



LED display technology
for tomorrow's world.

Please contact us if you have any questions,
we're always happy to help

www.theledstudio.com
sales@theledstudio.co.uk

UK Showroom

The Pavilion
Merchant Square
London, W2 1JZ
United Kingdom

Tel: +44 (0) 20 3832 9500

Head Office

Unit 3 Clearwater Business Park
Frankland Road
Swindon, SN5 8YZ
United Kingdom

Tel: +44 (0) 20 3852 9500

EMEA Office

169-171 Makarios III Avenue
Cedars Oasis Tower
3027, Limassol
Cyprus

Tel: +357 9625 8848

USA Office

8701 John W Carpenter Frwy,
Suite 150,
Dallas TX 75247
USA

Tel: +1 (508) 657-4622