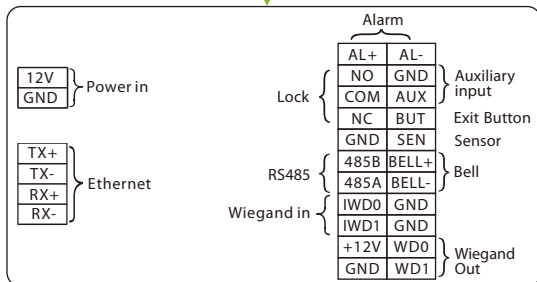
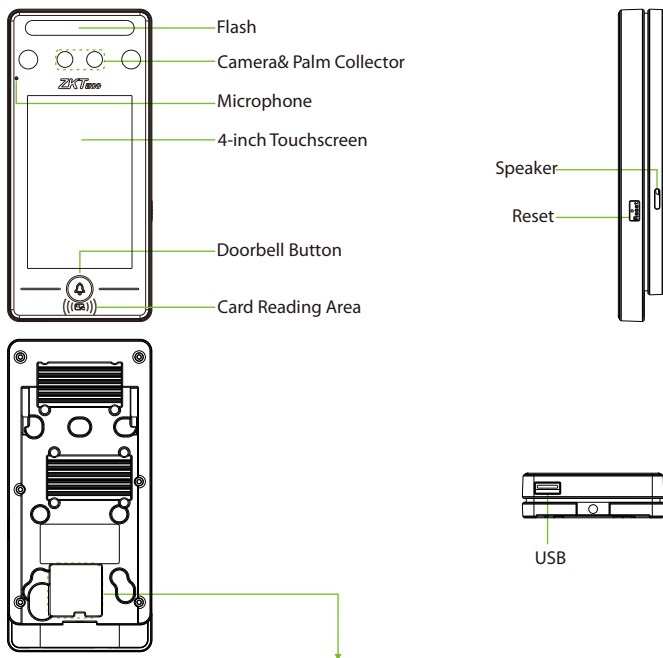


Quick Start Guide

4-inch Visible Light Terminal

Version: 1.0

Overview



Installation Environment

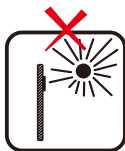
Please refer to the following recommendations for installation.



INSTALL INDOORS
ONLY



AVOID INSTALLATION
NEAR
GLASS WINDOWS

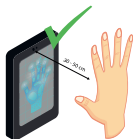


AVOID DIRECT
SUNLIGHT
AND EXPOSURE



AVOID USE OF ANY
HEAT SOURCE
NEAR THE DEVICE

Recommended Palm Gestures



KEEP EFFECTIVE
DISTANCE OF
30-50 cm



KEEP SPACES
BETWEEN
YOUR FINGERS



DO NOT KEEP
YOUR FINGERS
CLOSE



DO NOT KEEP
PALM OUTSIDE
COLLECTION AREA



DO NOT KEEP
YOUR FINGERS
FOLD/CURLED

Note:

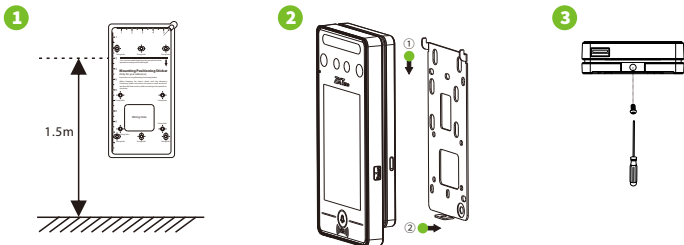
1. Place your palm within **30-50 cm** of the device.
2. Place your palm in the palm collection area, such that the palm is placed parallel to the device.
3. Make sure to keep space between your fingers.

Recommended Standing Position



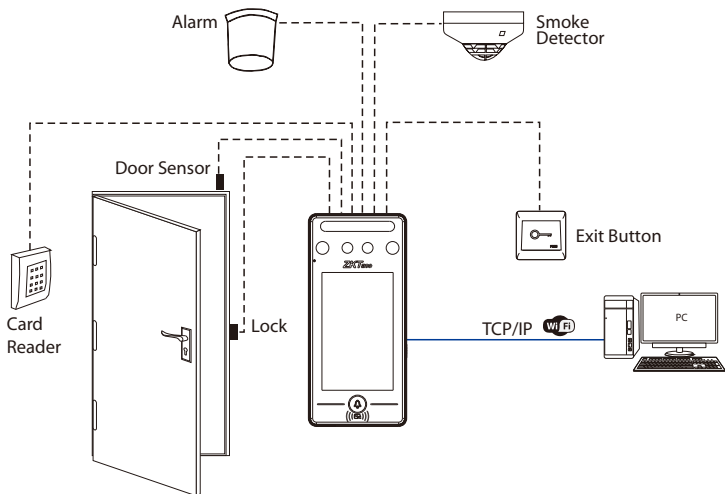
KEEP EFFECTIVE
DISTANCE OF
0.3-2m

Device Installation

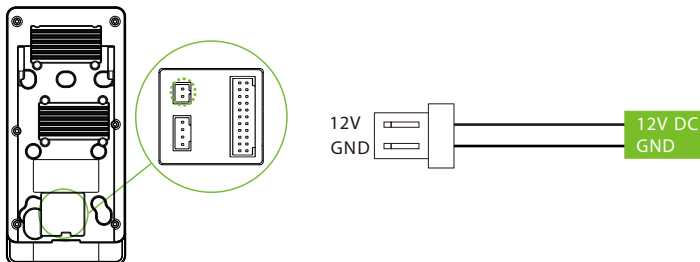


- ① Attach the mounting template sticker to the wall, and drill holes according to the mounting paper. Fix the back plate on the wall using wall mounting screws.
- ② Attach the device to the back plate.
- ③ Fasten the device to the back plate with a security screw.

Standalone Installation



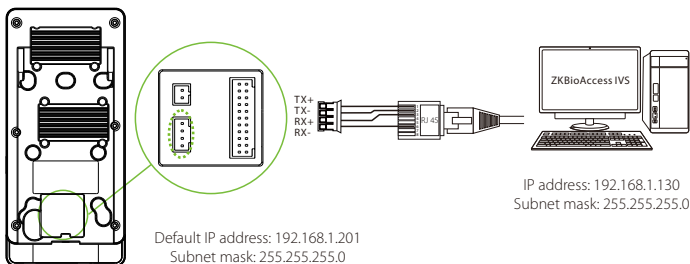
Power Connection



Recommended power supply

- 1) $12V \pm 10\%$, at least 3000mA.
- 2) To share the power with other devices, use a power supply with higher current ratings.

Ethernet Connection



Default IP address: 192.168.1.201
Subnet mask: 255.255.255.0

IP address: 192.168.1.130
Subnet mask: 255.255.255.0

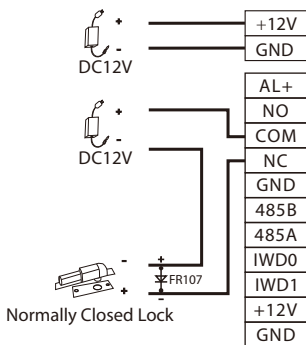
Click [COMM.] > [Ethernet] > [IP Address], input the IP address and click [OK].

Note: In LAN, IP addresses of the server (PC) and the device must be in the same network segment when connecting to ZKBioAccess IVS software.

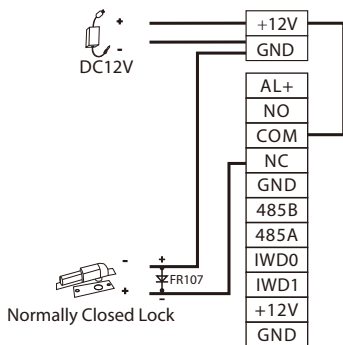
Lock Relay Connection

The system supports both **Normally Opened Lock** and **Normally Closed Lock**. The **NO Lock** (normally opened when powered) is connected with 'NO1' and 'COM' terminals, and the **NC Lock** (normally closed when powered) is connected with 'NC1' and 'COM' terminals. The power can be shared with the lock or can be used separately for the lock, as shown in the example with NC Lock below:

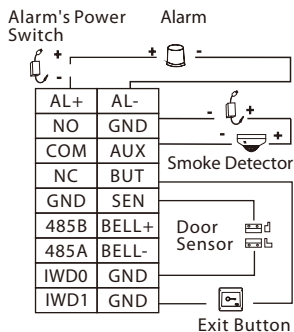
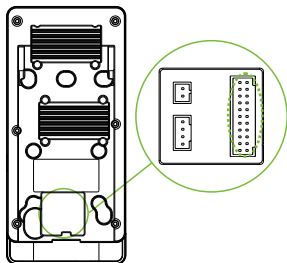
1) Device not sharing power with the lock



2) Device sharing power with the lock

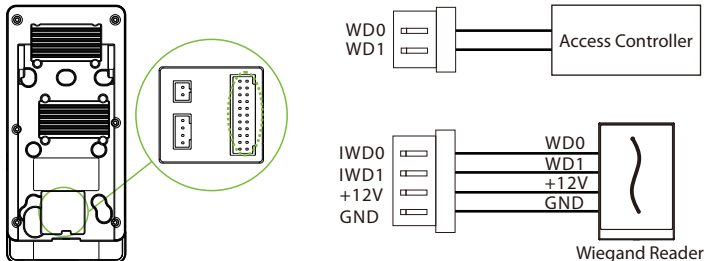


Door Sensor, Exit Button & Alarm Connection



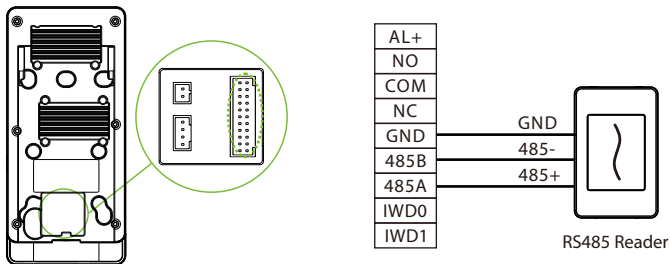
Wiegand Reader Connection

Wiegand card reader connects to the top 4 pins of the wiegand terminal and the last two pins are used by the Access Controller, as shown in the following figure. It sends the credentials to the device via wiegand communication.




RS485 Connection


The RS485 lets user connect to multiple readers to the device. RS485 can be connected to the terminal, as shown in the figure below.

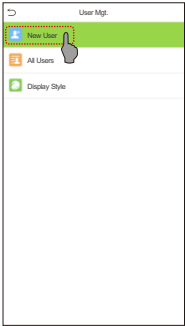
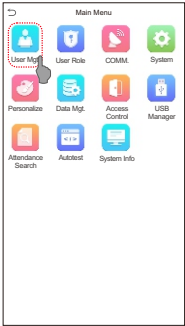
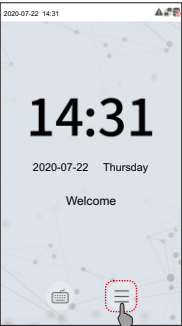


User Registration

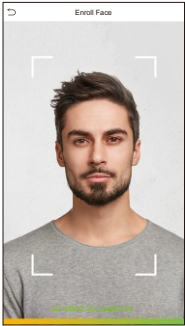
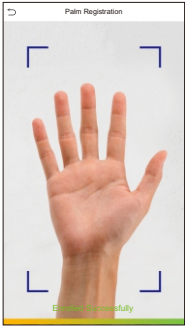
When there is no super administrator set in the device, click on  to enter the menu. Add a new user and set User Role to Super Admin, then the system will request for the administrator's verification before entering the menu. It is recommended to register a super administrator initially for security purposes.

Method 1: Register on the device

Click on  > [User Mgt.] > [New User] to register a new user. The options include entering the user ID and Name, setting User Role, registering Palm, Face, Card Number, Password and adding User Photo.



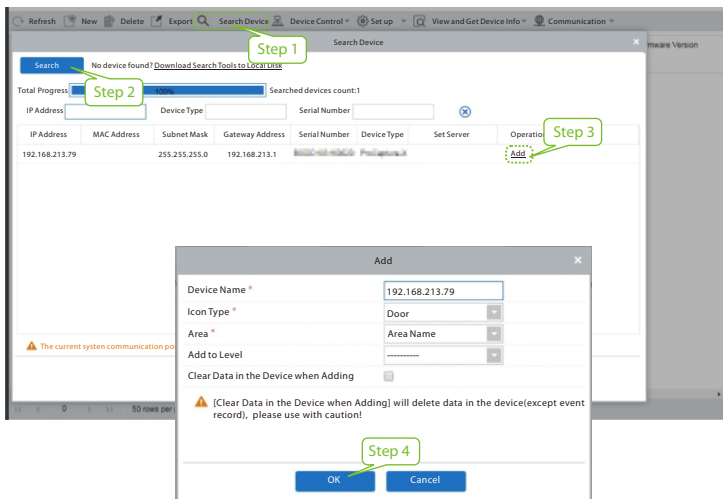
New User	
User ID	1
Name	Mike
User Role	Normal User
Palm	1
Face	1
Card Number	1
Password	*****
User Photo	1
Access Control Role	



Method 2: Register on ZKBioAccess IVS software

Please set the IP address and cloud service server address in the Comm. Menu option on the device.

1. Click **[Access] > [Access Device] > [Device] > [Search Device]** to search the device on the software. When an appropriate server address and port is set on the device, the searched devices are displayed automatically.



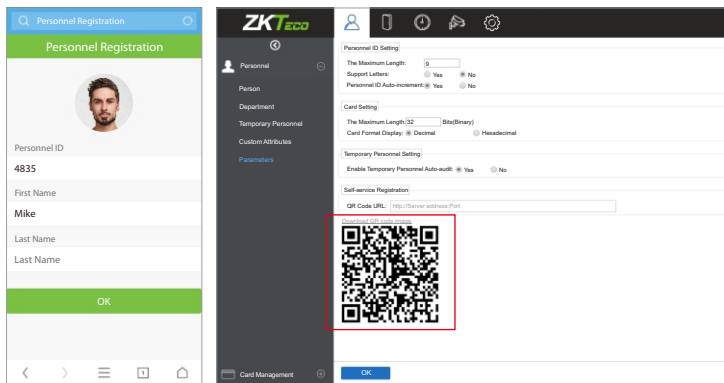
2. Click **[Add]** in operation column, a new window will pop-up. Select Icon type, Area, and Add to Level from each dropdowns and click **[OK]** to add the device.
3. Click **[Personnel] > [Person] > [New]** and fill in all the required fields to register a new users in the software.
4. Click **[Access] > [Device] > [Device Control] > [Synchronize All Data to Devices]** to synchronize all the data to the device including the new users.

For more details, please refer to the ZKBioAccess IVS User Manual.

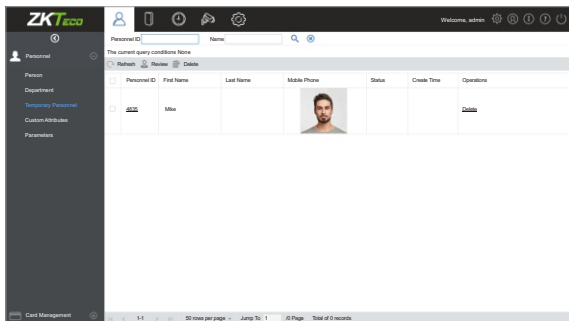
Method 3: Register on the phone

Once the ZKBioAccess IVS software is installed, the users could enroll their face via a browser application on their own mobile phone.



1. Click **[Personnel]** > **[Parameters]**, input "http://Server address: Port" in the QR Code UGL bar. The software will automatically generate a QR code. Scan the QR code or login onto "http://Server address: Port/app/v1/adreg" by the mobile phone to register users.





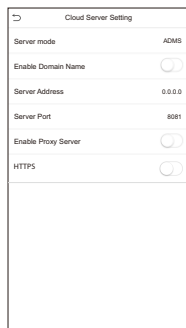
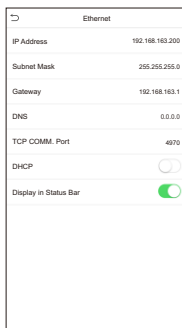
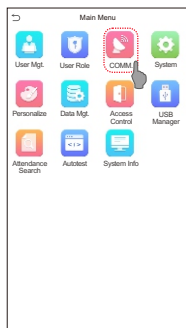
2. The users will be displayed in **[Personnel]** > **[Temporary Personnel]**, click on **[Review]** option and assign a department and click **[OK]** to successfully add the user.



Ethernet and Cloud Server Settings

Click on  > [COMM.] > [Ethernet] to set the network parameters. If the TCP/IP communication of the device is successful, the icon  will be displayed in the upper right corner of the standby interface.

Click on  > [COMM.] > [Cloud Server Setting] to set the server address and server port, that is, the IP address and port number of the server after the software is installed. If the device communicates with the server successfully, the icon  will be displayed in the upper right corner of the standby interface.



Note:

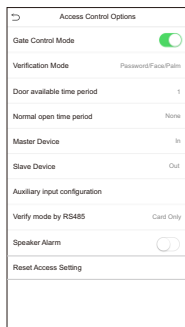
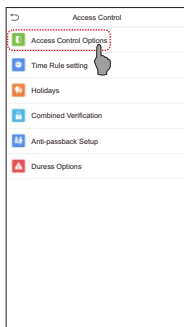
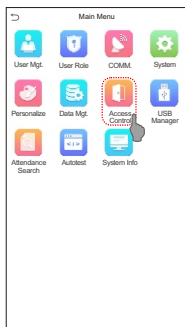
While pairing the device with ZKBioAccess IVS software. Make sure that the option **Enable Domain Name** is disabled and the correct server address and port are entered.

Server Address: Set as the IP address of the ZKBioAccess IVS server.

Server Port: Set as the service port of ZKBioAccess IVS (the default is 8088).

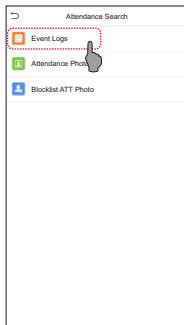
Access Control Setting

Click on ☰ > [Access Control] to enter the access control management interface and set relevant parameters of access control.



Attendance Record

Click on ☰ > [Attendance Search] > [Event Logs] to enter the logs query interface, input the user ID and select the time range, the corresponding event logs will be displayed.



Personal Record Search

Date	User ID	Time
03-03		
	4	11:25
	2	11:25 11:22
	3	11:25
03-04		
	1	11:29
	3	11:29 11:21
	2	11:28
	4	11:26
03-05		
	1	11:27
	4	11:27
	3	11:27
	2	11:27

www.zkteco.eu

