

AMG160C

1U 19-INCH RACK CHASSIS FOR AMG160 EXTEND-NET

**EXTEND-NET™**

Industrial 19inch Racks

The AMG160C series are a range of 1U rack chassis for standard 19 inch racks. The chassis allow for mounting up to 12x AMG160 Extend-Net™ industrial Ethernet extender units both with or without integrated power supplies.



[AMG160C Series*]

PSU 48V 50W	Contacts 1x Fault	Temp -30~+70°C	Mounting Rack	PSU x2 Dual

/ OVERVIEW

The AMG160C are a range of rack chassis that support mounting of up to 12x AMG160 Extend-Net™ industrial Ethernet Extenders and provides an easy to install and maintain solution for mounting in 19inch racks and cabinets. Its short depth even allows for installation in small wall mounted 19inch rack enclosures.

The AMG160C chassis can be ordered as a simple bracket only option for the simplest of installations where the AMG160 units will be powered with PoE pass-through power. An additional tray mount option provides the same level of simplicity with the added feature of various cable mounting locations or where an external 3rd party power supply may be used to power the AMG160 units.

The AMG160C chassis can also be ordered with fully integrated single or dual redundant mains (85-264V_{AC}) or DC (48V_{DC}) input power supplies and will provide 12x stable DC outputs to power the AMG160 units saving the maximum PoE for edge devices. These models also support hot-swappable replacement of AMG160 units.

Blank panels are also available separately to ensure the most professional installation possible.

/ FEATURES

- Up to 12 positions for AMG160 single channel units
- 19inch standard rack-mount size 1U high
- Available as bracket only or bracket with tray options
- Available with fully integrated power supply options with multiple 48V_{DC} outputs
- Single or dual 85-264V_{AC} mains power inputs
- LED indication for power supply operation to aid installation and system fault diagnosis
- Fault relay for notification of power supply failure
- Integrated cable management features ensure a clean installation
- 12 x power connection cables included
- Manufactured in the United Kingdom
- AMG Lifetime Support Warranty

*Individual AMG160 units not included

Specifications.

Interface.

LED Indicators Capacity	2x Power* 12 Positions
Power Input: BR & TR Models	PoE Pass-Through or 3rd Party Power Supply
RP-AA Models	2x IEC C14 Sockets
RP-AD Models	1x IEC C14 Socket + 1x 4-Way Barrier Terminal
RP-DD Models	1x 4-Way Barrier Terminal
Power Output: 48V _{DC}	3x 8-Way 3.81mm Screw Terminal Connectors*
Fault Relay	1x 2-Way Barrier Terminal*
Earth Connection	1x M3 or M5 Stud

(AMG160C-TR & AMG160C-RP-XX models only)

Power*.

Power Inputs	1 or 2
Operating Voltage:	
Mains Input	85-264V _{AC} , 47~63Hz or 120-370V _{DC}
DC Input	48V _{DC}
Input Current:	
Mains Input	1.2A (115V _{AC}) / 0.8A (230V _{AC})
DC Input 48V	0.38A Max
Efficiency	>90%
Output	12x 48V _{DC} , 50W Max
Fault Relay	Form A 60V @ 2A Max

Packaging.

Shipping Weight:	
BR Model	x.xxkg /x.xxlb
TR Model	x.xxkg /x.xxlb
RP-AA Model	x.xxkg /x.xxlb
RP-AD Model	x.xxkg /x.xxlb
RP-DD Model	x.xxkg /x.xxlb
Dimensions	(W x D x H)
BR Model	xx x xx x xx mm xx x xx x xx in
TR/RP-XX Models	550 x 320 x 110 mm 21.65 x 12.60 x 4.33 in

Environmental.

Operating Temp:	
BR/TR/DD Models	-40°C to +75°C
AA/AD Models	-30°C to +70°C
Storage Temp.	-40°C to +85°C
Humidity	20% to 90% (non-condensing)
MTBF	>300,000 hours
MTBF Standard	MIL-HDBK-217F GB25
Heat Dissipation:	
BR/TR/DD Models	0 BTU/h (excluding individual units)
AA Model	341 BTU/h (excluding individual units)
AD Model	171 BTU/h (excluding individual units)
Cooling:	Passive Cooling
Noise Level	0 dBA

Mechanical.

Housing	Aluminium
Dimensions:	(W x D x H)
BR Model	484 x 40 x 44 mm 19.06 x 1.57 x 1.73 in
TR Model	484 x 288 x 44 mm 19.06 x 11.34 x 1.73 in
AA/AD/DD Models	484 x 306 x 44 mm 19.06 x 12.05 x 1.73 in
Installation	19inch Rack (1U)
Weight:	
BR Model	x.xxkg /x.xxlb
TR Model	x.xxkg /x.xxlb
RP-AA Model	x.xxkg /x.xxlb
RP-AD Model	x.xxkg /x.xxlb
RP-DD Model	x.xxkg /x.xxlb

Regulatory*.

Safety	IEC/UL/EN 62368-1
EMI	EN55032 Class B CISPR32 Class B
EMS	EN61000-3-2 Class A EN61000-4-2 (ESD) EN61000-4-3 (RS) EN61000-4-4 (EFT) EN61000-4-5 (Surge) EN61000-4-6 (CS) EN61000-4-11 (Dips)
Environmental	Reach, RoHS, WEEE

* Only applicable to the AMG160C-RP-XX models

Part Numbers.

1U Rack Chassis With No Integrated PSU's

AMG160C-BR	1U AMG160 Rack Chassis, Bracket Only, No PSU Included
AMG160C-TR	1U AMG160 Rack Chassis, Bracket & Tray Only, No PSU Included

1U Rack Chassis With Integrated PSU's

AMG160C-RP-AA	1U AMG160 Rack Chassis, Dual 48V _{DC} Integrated PSU's
AMG160C-RP-AD	1U AMG160 Rack Chassis, Single 48V _{DC} Integrated PSU + Single 48V _{DC} External Input
AMG160C-RP-DD	1U AMG160 Rack Chassis, Dual 48V _{DC} External Inputs

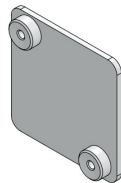
Included Accessories.

Power Connection Cables	12x Red/Black Power Connection Cables For Powering AMG160 Individual Units
Mains Lead	1 or 2x Region Specific IEC Line Cords (UK/EU/US/AUS Plug Type) For Powering AMG160C-RP-AA or AD Models



Optional Accessories.

AMG160C-BP	1 Slot Blanking Panel For The AMG160C Series Chassis. Includes 2 x Fixing Screws.
------------	---



Proud to be a British
Manufacturer

In a continuing effort to improve and advance technology, product specifications are subject to change without notice. Please visit www.amgsystems.com for the latest product specifications.

