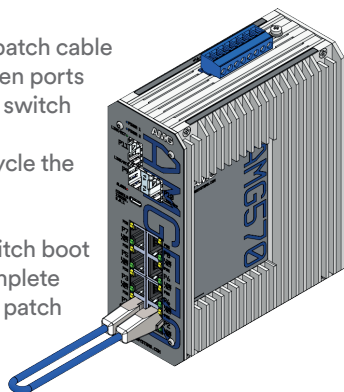


/ DEVICE RESET PROCEDURE

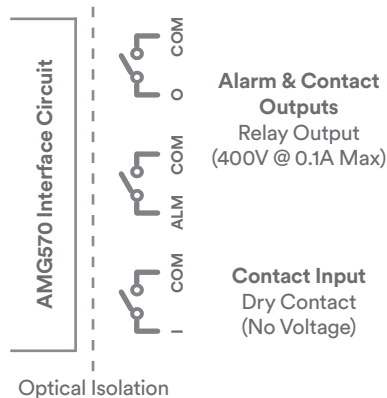
① Insert a patch cable loop between ports 1 & 2 on the switch

② Power cycle the switch

③ After switch boot cycle is complete remove the patch cable loop



/ CONTACT INPUTS & OUTPUTS



SCAN ME



/ POE CAPABILITIES

Example part code:

AMG570-2GBT-4GAT-2G-3S-P300

Ensure the PSU size used is at least equal to the maximum PoE budget figure.

Characters	PoE Standard Supported	Characters	PoE Budget
None	Non-PoE Model	P240	240W Max
AT	IEEE 802.3at 30W Port	P300	300W Max
BT	IEEE 802.3bt 60/90W Port	P360	360W Max

Check the product label to determine the PoE power supported on each port and the units total maximum PoE budget.

IEEE 802.3at Models
Type 1 & 2 PoE support
Mode A PSE only

IEEE 802.3bt Models
Type 1, 2, 3 & 4 PoE support. Mode A and/or Mode B PSE

/ CONNECTING TO THE SWITCH



Web GUI

Default IP Address:	192.168.1.101
Username:	admin
Password:	admin

Console CLI

USB-A to USB-C Cable	115200,8,N,1
----------------------	--------------



amg-support.com/AMG570-8G-3S_Series

To access the full software user guide for this product please visit the product page using the QR code above or the direct link opposite.

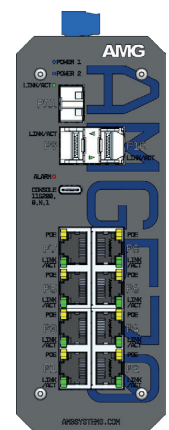


AMG570

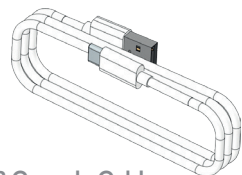
AMG570-8G-3S Series L2+ Industrial Managed Switch

Installation Manual - Hardware

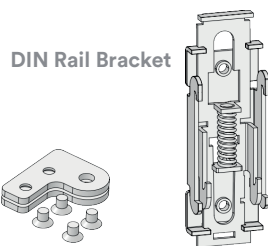
/ AMG570-8G-3S INCLUDED ACCESSORIES



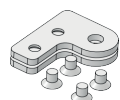
AMG570 Switch



USB Console Cable

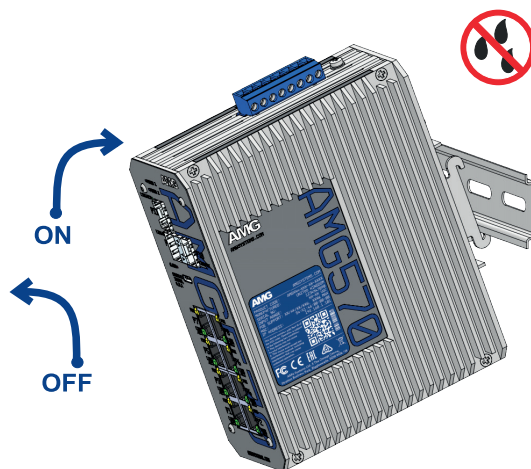


DIN Rail Bracket

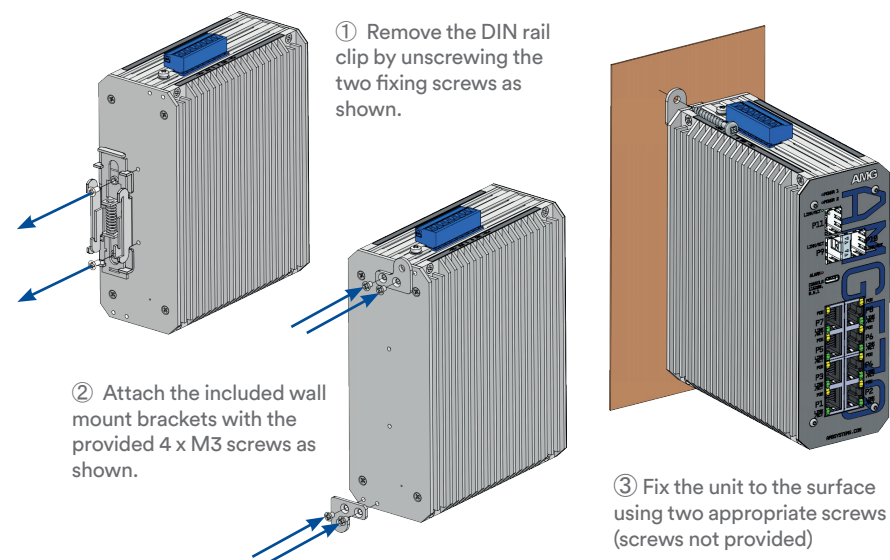


2 x Wall Mounting Brackets

/ DIN RAIL MOUNT INSTALLATION



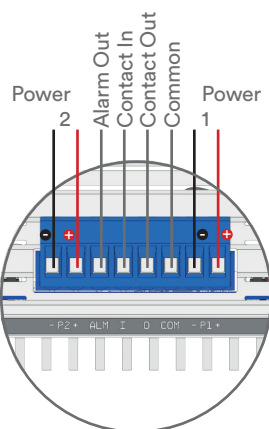
/ SURFACE MOUNT INSTALLATION



/ POWER



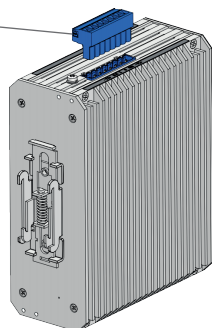
Warning
Check Polarity Before Powering
No Reverse Polarity Protection



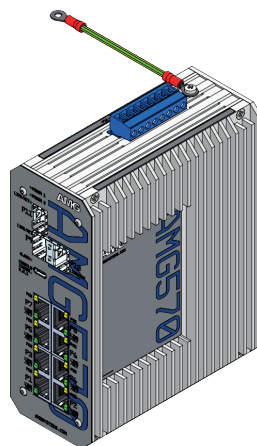
Model Type	Voltage
Non-PoE Models	12-56 VDC
30W PoE Models	50-56 VDC
90W PoE Models	52-56 VDC

Model Type	Power
All Models	10W Max*

*Excludes PoE Load

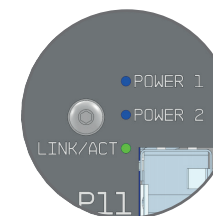
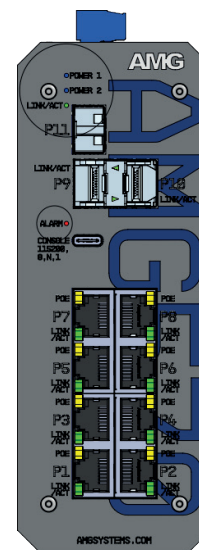


/ EARTH PROTECTION



To provide correct protection from ESD and Surge events ensure that the unit is correctly earthed using the provided earth connection point in accordance with local electrical codes & standards. (cable not provided)

/ LED INDICATORS



LED	Colour	Description
POWER 1 / 2	Blue	DC input present on power 1 and/or power 2
ALARM	Red	Unit in alarm condition
SFP LINK/ACT	Green	SFP link present (flashes with data traffic activity)
POE 1-8	Yellow	PoE is being delivered on the port
RJ45 LINK/ACT	Green	Ethernet link present (flashes with data traffic activity)