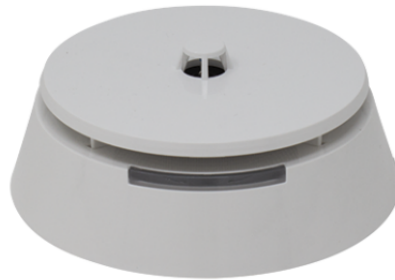


**41RML100****ADDRESSABLE MULTI-CRITERIA SMOKE/HEAT DETECTOR**

The LOGIFIRE series 41RML100 detector is a multi-criteria detector that combines the detection technologies of an A1R class rate-of-rise sensor with those of an optical Tyndall-effect smoke detector. The sensor is also fitted with a built-in isolator. Microprocessor-controlled digital signal analysis. Contamination level auto-compensation and maintenance indication. Programmable sensitivity across three levels. Operating class A1R. Quick cleaning of the sensor chamber thanks to the intuitive disconnection of the components. Evolved design suitable for any type of installation, even in the most aesthetically demanding situations. High-visibility light indications. Automatic addressing or with programmer. Approved to EN 54-5, EN 54-7 and EN 54-17.



41RML100

ADDRESSABLE MULTI-CRITERIA SMOKE/HEAT DETECTOR

MAIN FEATURES

Model	Multi-criteria smoke/heat detector+ rate of rise detector, LOGIFIRE series
Backwards compatible with ATENA series control panels	Yes
Sensitivity level settings	High/Normal*/Medium/Low (optics) - A1R (thermal - 58°, RoR)
LED indicators	2, visibility 360°
Conformity class EN54-5	A1/R
Isolator	Yes
Settling time on power-up (s) (secs)	30
EN regulations	EN54-5, EN54-7, EN54-17

HARDWARE SPECIFICATIONS

IP protection rating	IP30
Type of finishing materials	ABS
Product color	White RAL9016
Compatible base	41RBX020
Operating temperature (°C)	-10 ÷ 60
Operating humidity (RH max @40°C) (%)	0 ÷ 96
Cross-section for terminals (mm)	0.4 ÷ 2.5
Width (mm)	108
Height base included (mm)	48
Product weight (g)	125

ELECTRICAL SPECIFICATIONS

Power supply	16 - 32VDC (Nom. 27VDC)
Consumption during communication	<310uA@27VDC
Rated absorption (stand-by)	<190µA@27VDC
Consumption in alarm status	6.5mA



41RML100

ADDRESSABLE MULTI-CRITERIA SMOKE/HEAT DETECTOR

ELECTRICAL SPECIFICATIONS

Output in alarm status for remote indication

7.5mA@7.5VDC