

USB-Com Installation Instructions

Introduction

The *USB-Com* module can be connected to various Texecom control panels to allow full upload/download of system program data via a PC and appropriate UDL software package. The *USB-Com* is compatible with the following Windows® operating systems:

- Windows 98 Second Edition (SE)
- Windows 2000
- Windows Millennium Edition (Me)
- Windows XP

Connections

The figure below shows the layout of the *USB-Com* connectors:

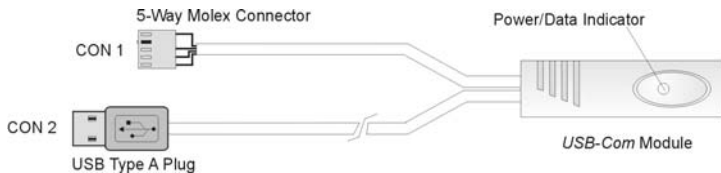


Figure 1. *USB-Com* Connectors

CON 1: This 5-way Molex type connector is for plugging onto the Texecom *Veritas R8 Plus*, *Veritas Excel* and all *Premier* control panels. By using the appropriate UDL software package the control panel can be programmed locally.

CON 2: This USB type "A" connector should be plugged into one of the PC's USB ports.

Power/Data Indicator: This is a bi-coloured indicator that is lit green when the *USB-Com* is powered. When the *USB-Com* is sending and receiving data it flashes between red and green.

USB Driver Installation

The *USB-Com* requires a driver to be installed onto the PC before it can be used. The driver can be found on the Wintex CD in the **D:\USB-Com** folder or alternatively it can be downloaded from the Texecom web site www.texecom.com.

► Windows 98SE and Windows ME

- 1) Plug CON 1 of the *USB-Com* onto the control panel and ensure that the control panel is powered up.
- 2) Plug CON 2 of the *USB-Com* into a USB port on the PC. Turn on your computer to allow the Operating System to detect the *USB-Com*.
- 3) When detected the **Add New Hardware Wizard** screen appears:



- 4) If you are using the drivers from the Wintex CD insert the CD into your DVD/CD-ROM drive. Then click the **Specify the location of the driver (Advanced)** option and click the **Next** button.
- 5) Click the **Specify a location** check box. Then, click the **Browse** button to locate the driver files in **D:\USB-Com** (where D: represents your DVD/CD-ROM drive). Ensure that the **Removable Media (Floppy, CD-ROM...)** check box is not selected:



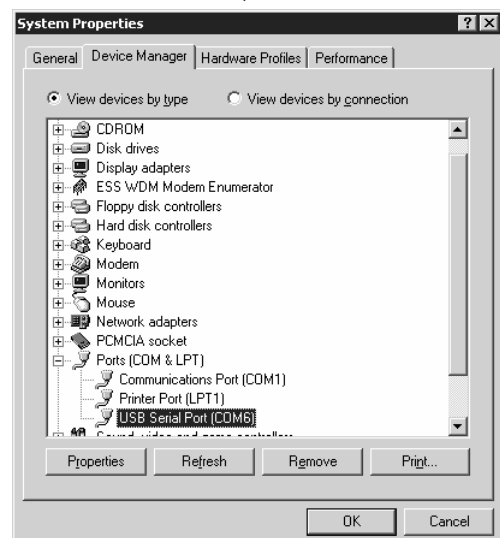
- 6) Click the **Next** button, the following screen appears:



- 7) Click the **Next** button, the following screen appears:



- 8) Click the **Finish** button to complete the *USB-Com* installation.
- 9) The *USB-Com* will be assigned a virtual com port, to find out which port number has been assigned to the *USB-Com*, open the **Device Manager** (press the **+Break** on your keyboard) and expand the **Ports (COM & LPT)** option. You should see the **USB Serial Port** and its com port number, COM6 in the example below:



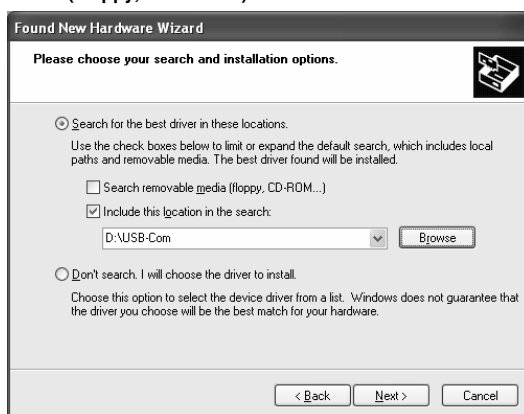
- 10) The *USB-Com* is now installed and ready for use with the appropriate UDL software package, see Configuring the UDL Software over.

► Windows XP and Windows 2000

- 1) Plug CON 1 of the **USB-Com** onto the control panel and ensure that the control panel is powered up.
- 2) Plug CON 2 of the **USB-Com** into a USB port on the PC. Turn on your computer to allow the Operating System to detect the **USB-Com**.
- 3) When detected the **Found New Hardware Wizard** screen appears:



- 4) If you are using the driver from the Wintex CD insert the CD into your CD-ROM/DVD drive. Then click the **Install from a list or specific location (Advanced)** option and click the **Next** button.
- 5) Click the **Include this location in the search** check box. Then, click the **Browse** button to locate the driver files in **D:\USB-Com** (where D: represents your DVD/CD-ROM drive). Ensure that the **Search removable Media (Floppy, CD-ROM...)** check box is not selected:



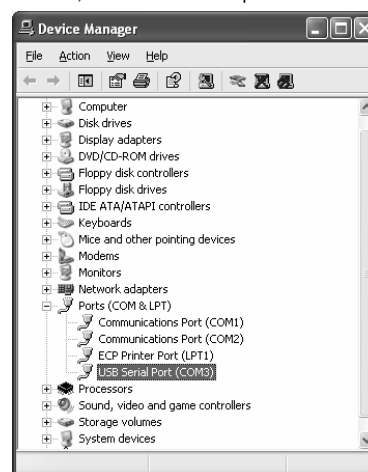
- 6) Click the **Next** button, the following screen appears:



- 7) Click the **Finish** button to complete the USB High Speed Serial Converter installation.
- 8) After a short delay the **Found New Hardware Wizard** screen will appear again:



- 9) Repeat steps 4 to 7 to install the USB Serial Port driver.
- 10) The **USB-Com** will be assigned a virtual com port, to find out which port number has been assigned to the **USB-Com**, open the **Device Manager** (press the **+Break** on your keyboard) and expand the **Ports (COM & LPT)** option. You should see the **USB Serial Port** and its com port number, COM3 in the example below:



- 11) The **USB-Com** is now installed and ready for use with the appropriate UDL software package, see Configuring the UDL Software below.

Configuring the UDL Software

Once the USB driver is installed you need to configure the UDL software to the same port that was assigned by the virtual com port driver:

► Wintex UDL

- 1) Run **Wintex** and open the **Modem Settings & Options** screen by pressing **CTRL+M** on the keyboard.
- 2) In the **PC-Com Options** section set the com port to the same number that was assigned by the USB driver, e.g. COM3.
- 3) Click on the **OK** button. **Wintex** is now ready for use.

► Veritas UDL

- 1) Run **Veritas UDL** and open the **Modem Settings & Options** screen by pressing **CTRL+M** on the keyboard.
- 2) In the **Com Port** section set the com port to the same number that was assigned by the USB driver, e.g. COM3.
- 3) In the **Modem Options** section set the modem type to **PC-Com Module**.
- 4) Click on the **OK** button. **Veritas UDL** is now ready for use.



The **USB-Com** conforms to European Union (EU) Low Voltage Directive (LVD) 73/23/EEC (amended by 93/68/EEC) and Electro-Magnetic Compatibility (EMC) Directive 89/336/EEC (amended by 92/31/EEC and 93/68/EEC).

The CE mark indicates that this product complies with the European requirements for safety, health, environment and customer protection.

Texecom
www.texe.com

Texecom Limited, Bradwood Court, St. Crispin Way, Haslingden, Lancashire BB4 4PW, England.

Technical Support:

Tel: +44 (0)1706 234833; Tel: +44 (0)1706 234811; Fax: +44 (0)1706 213187