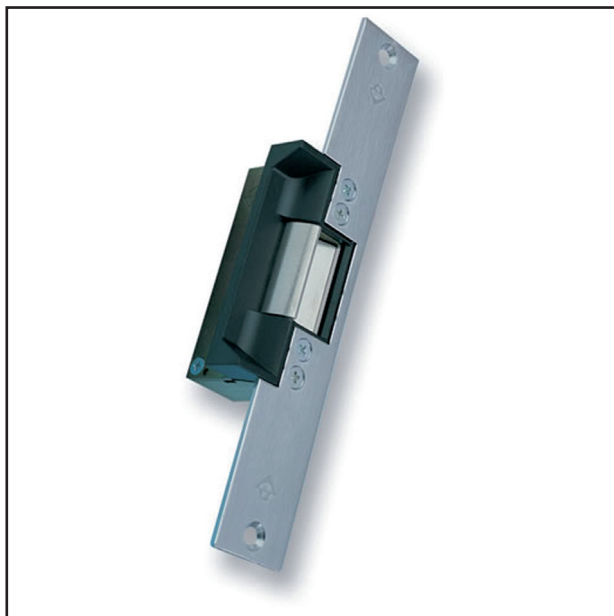


# 7113

## Electric Strike for Single or Double Leaf Timber or Steel Doors



The Adams Rite 7100 Series is for remote use access control of any door equipped with Adams Rite 4700 series (or similar) deadlatch



### Key Benefits

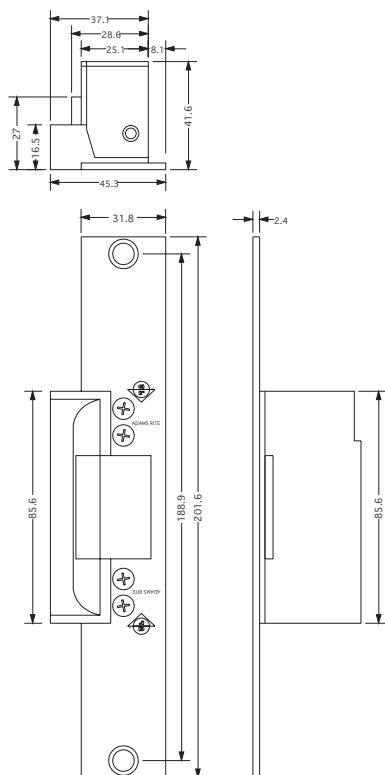
- Suitable for use on timber and steel doors
- Non-handed
- Facility to change duty from fail-safe to fail secure and vice versa
- The 7113 features a narrower faceplate than the 7110 series and is particularly suited to 44mm thick timber doors
- 907kg holding force (2000lbs)
- The 7113 strike can be mounted in the frame or the inactive leaf of a pair of doors and a modified sub cover is available as an option for applications using a T - bar on the door
- Electrical actuation unlocks the strike jaw, releasing the latchbolt so the door can be opened without operating the latch itself

### Related Hardware

RiteKey Keypad ~ Push-to-Exit Button ~ Power Supply Unit ~  
4720ANSI Deadlatch

**Note:** For out of hours security specify the Sentinel 6 Deadlock in conjunction with the electric strike/latch combination.

## Dimensions



## Specifications

<b>Current Draw:</b>	12vAC=1.48A, 12vDC=0.332A, 24vAC=0.74A, 24vDC=0.19A (nominal). DC intermittent and continuous units are silent, AC intermittent units "buzz" on operation.
<b>Voltage Tolerance:</b>	±10%.
<b>Powered By:</b>	Internal solenoid.
<b>Monitoring:</b>	(Optional) Single: Latch only, Double: Latch & solenoid.
<b>Duty:</b>	Fail-safe or fail-secure (convertible without additional parts). DC power supply required for fail-safe operation.
<b>Jaw Strength:</b>	907kg (2000lbs).
<b>Case:</b>	85.6mm x 28.6mm x 41.6mm. Zinc aluminium alloy.
<b>Mechanism:</b>	Stainless steel internal blocking mechanism.
<b>Strike Opening:</b>	36.5mm x 15.9mm x 12.7mm. Stainless steel bolt retainer jaw.
<b>Door Gap:</b>	Minimum 3mm (1/8"), operational door gap 3-5mm.
<b>Faceplate:</b>	Steel. 201.6mm x 31.8mm. Flat, square cornered.
<b>Finishes:</b>	Satin chrome (other finishes may be available on request).
<b>Subcover:</b>	Basic subcover lip will suit a 44.45mm (1 3/4") thick door that closes flush with jamb edge. For extended bolt-on subcovers see ordering codes.
<b>Standards:</b>	ANSI/BHMA 156.5 Grade 1. UL Listed for burglary resistance.

## Ordering Codes Matrix

**7113 - 3 1 0 - 652 - 1**

**Model Number**  
7113 8" Narrow Faceplate

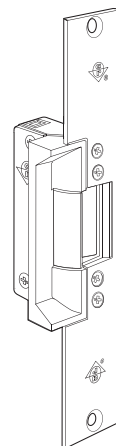
**Voltage**  
3 12 volt  
5 24 volt

**Current and Duty**  
1 DC Continuous  
or intermittent  
4 AC Intermittent (fail-secure only)

**Features**  
0 Standard/Fail-Secure  
5 Standard/Fail-Safe  
7 Monitored/Fail-Safe  
9 Monitored/Fail-Secure

**Finish**  
652 Satin Chrome

**Options**  
1 Single Monitoring (Latch only)  
2 Double Monitoring (Latch and Solenoid)



### Subcover Extension Codes (order separately)

Order Code	Dimension*	Order Code	Dimension*
91-0171-01	38.1mm (1.50")	91-0171-08	60.5mm (2.38")
91-0171-02	41.4mm (1.63")	91-0171-09	63.5mm (2.50")
91-0171-03	44.5mm (1.75")	91-0171-10	66.8mm (2.63")
91-0171-04	47.8mm (1.88")	91-0171-11	69.9mm (2.75")
91-0171-05	50.8mm (2.00")	91-0171-12	73.2mm (2.88")
91-0171-06	54.1mm (2.13")	91-0171-13	76.2mm (3.00")
91-0171-07	57.2mm (2.25")		

\*Dimension from door centreline to jamb edge.